

**KUSSO TWO DEPARTURE (RNAV)**  
(KUSSO2.KUSSO) 22JAN26

DALLAS-FORT WORTH, TEXAS  
DALLAS-FORT WORTH INTL (DFW)

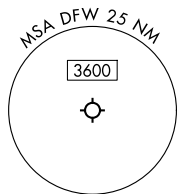
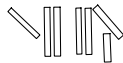
LONE STAR DEP CON  
125.2 343.65 (Props Only 13L/R, 17L/C/R, 18L/R)  
124.3 282.275 (Props Only 31L/R, 35L/C/R, 36L/R)  
D-ATIS DEP  
135.925  
CLNC DEL  
128.25  
CPDLC  
GND CON  
121.65 121.8 (E)  
121.85 (W)  
DFW TOWER  
126.55 127.5 (E)  
124.15 134.9 (W)

RNAV 1 - DME/DME/IRU or GPS.
RADAR required.

<b>TOP ALTITUDE: 2000</b>
-------------------------------

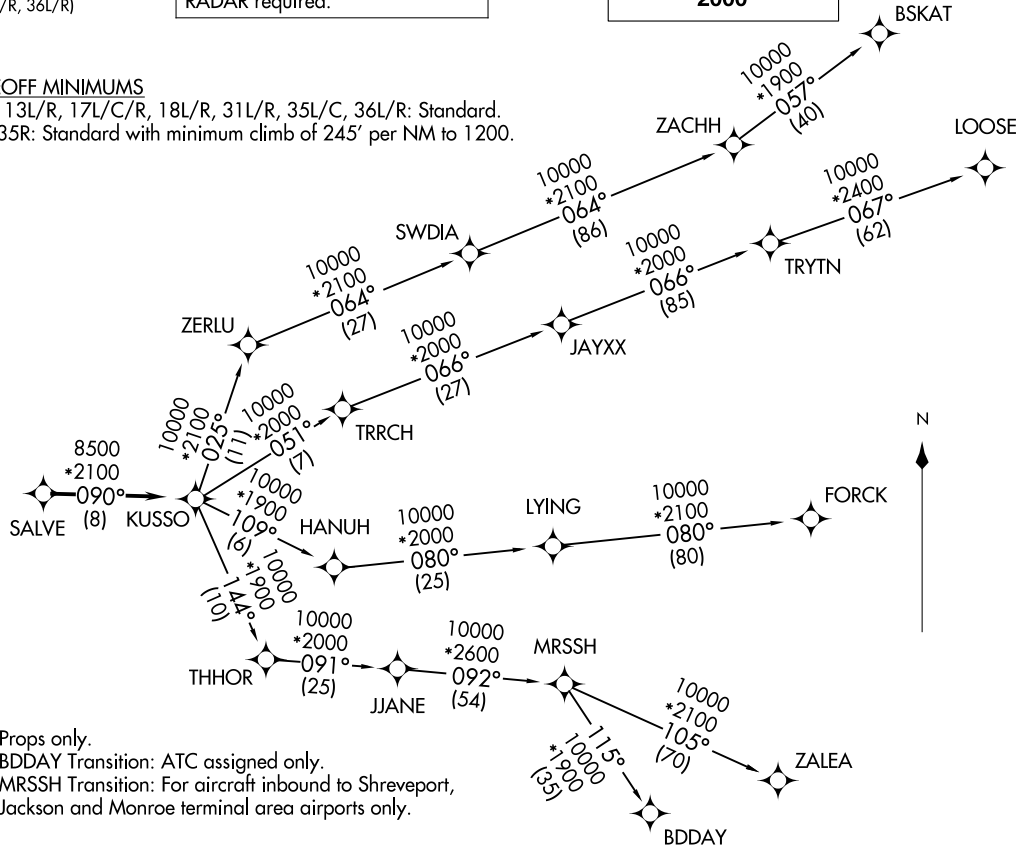
**TAKEOFF MINIMUMS**

Rwys 13L/R, 17L/C/R, 18L/R, 31L/R, 35L/C, 36L/R: Standard.  
Rwy 35R: Standard with minimum climb of 245' per NM to 1200.



NOTE: Props only.  
NOTE: BDDAY Transition: ATC assigned only.  
NOTE: MRSSH Transition: For aircraft inbound to Shreveport, Jackson and Monroe terminal area airports only.

(CONTINUED ON FOLLOWING PAGE)



NOTE: Chart not to scale.

**KUSSO TWO DEPARTURE (RNAV)**  
(KUSSO2.KUSSO) 26022

DALLAS-FORT WORTH INTL (DFW)  
DALLAS-FORT WORTH, TEXAS

AL-6039 (FAA)

# KUSSO TWO DEPARTURE (RNAV)



## DEPARTURE ROUTE DESCRIPTION

TAKEOFF RUNWAYS 13L/R, 17L/C/R, 18L/R, 31L/R, 35L/C/R, 36L/R: Climb on assigned heading for RADAR vectors to SALVE. Thence. . .

. . .on track 090° to KUSSO, then on (transition). Maintain 2000. Expect filed altitude 10 minutes after departure.

BDDAY TRANSITION (KUSSO2.BDDAY)

BSKAT TRANSITION (KUSSO2.BSKAT)

FORCK TRANSITION (KUSSO2.FORCK)

LOOSE TRANSITION (KUSSO2.LOOSE)

MRSSH TRANSITION (KUSSO2.MRSSH)

ZALEA TRANSITION (KUSSO2.ZALEA)

SC-2, 19 MAR 2026 to 16 APR 2026

SC-2, 19 MAR 2026 to 16 APR 2026