

WAAS CH 97324 W17D	APP CRS 176°	Rwy Ldg 13400 TDZE 562 Apt Elev 607
--	------------------------	--

RNAV (GPS) RWY 17C

DALLAS-FORT WORTH INTL (DFW)

▼ For uncompensated Baro-VNAV systems, LNAV/VNAV NA below -4°C (25°F) or above 54°C (130°F). Simultaneous approach authorized with Rwy 17L and 18L/R. DME/DME RNP-0.3 NA. LNAV procedure NA during simultaneous operations. Use of FD or AP providing RNAV track guidance required during simultaneous operations.

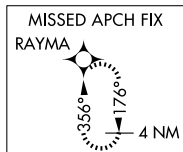
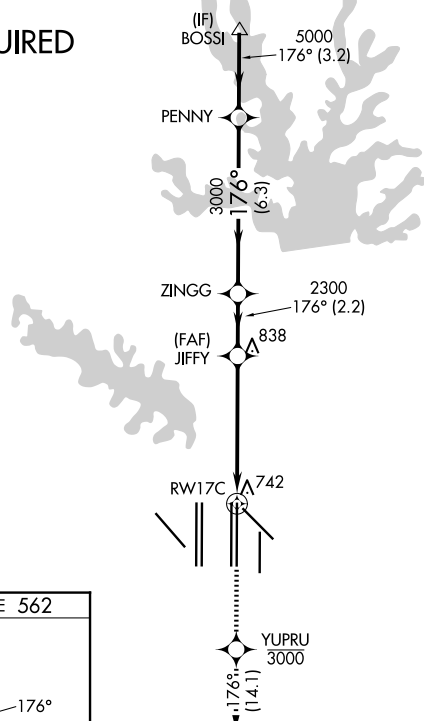
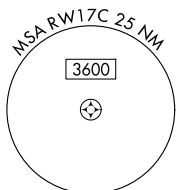
ALSF-2



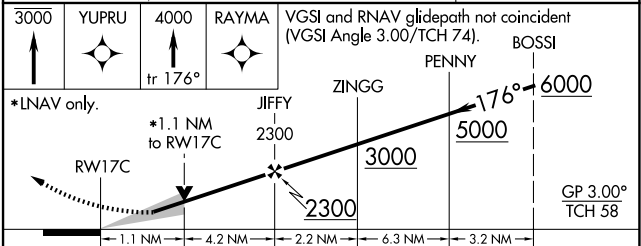
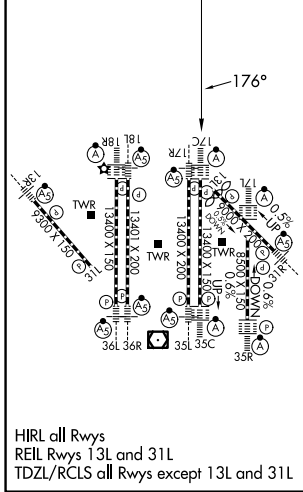
MISSED APPROACH: Climb to at or below 3000 direct YUPRU then climb to 4000 on track 176° to RAYMA and hold.

D-ATIS 123.775	LONE STAR APP CON 127.075	DFW TOWER 126.55 127.5 (E) 124.15 134.9 (W)	GND CON 121.65 121.8 (E) 121.85 (W)
--------------------------	-------------------------------------	---	---

RADAR REQUIRED



ELEV 607	D	TDZE 562
----------	----------	----------



CATEGORY	A	B	C	D
LPV DA		762/18	200 (200-½)	
LNAV/VNAV DA		1068/60	506 (500-¼)	
LNAV MDA	1000/24	438 (400-½)	1000/40	438 (400-¾)

SC-2, 19 MAR 2026 to 16 APR 2026

SC-2, 19 MAR 2026 to 16 APR 2026