

WAAS CH <b>53505</b> <b>W17A</b>	APP CRS <b>176°</b>	Rwy Ldg <b>13400</b> TDZE <b>567</b> Apt Elev <b>607</b>
--	------------------------	--

# RNAV (GPS) RWY 17R

DALLAS-FORT WORTH INTL (DFW)

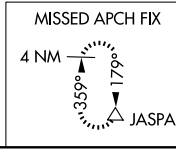
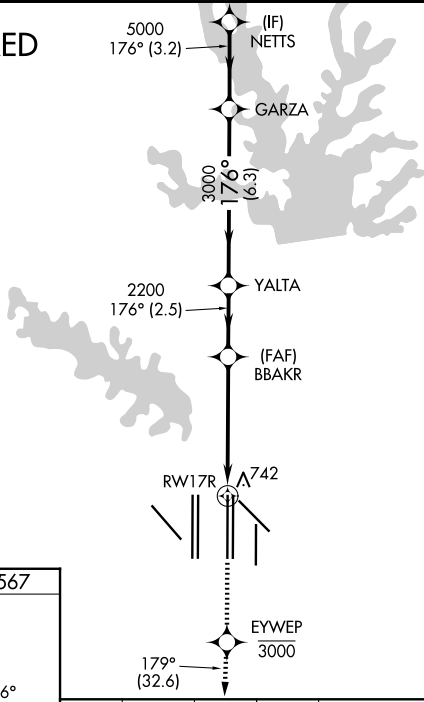
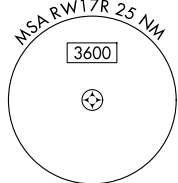
▼ For uncompensated Baro-VNAV systems, LNAV/VNAV NA below -4°C (25°F) or above 54°C (130°F). Simultaneous approach authorized with Rwy 17L and Rwys 18L/R. DME/DME RNP-0.3 NA. For inop MALSR increase LNAV/VNAV all Cats visibility to 1½ mile. LNAV procedure NA during simultaneous operations. Use of FD or AP providing RNAV track guidance required during simultaneous operations.



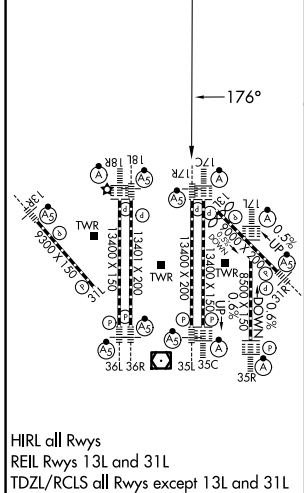
MISSED APPROACH: Climb to at or below 3000 direct EYWEP then climb to 4000 on track 179° to JASPA and hold.

D-ATIS <b>123.775</b>	LONE STAR APP CON <b>127.075</b>	DFW TOWER <b>126.55 127.5 (E)</b> <b>124.15 134.9 (W)</b>	GND CON <b>121.65 121.8 (E)</b> <b>121.85 (W)</b>
--------------------------	-------------------------------------	---	---

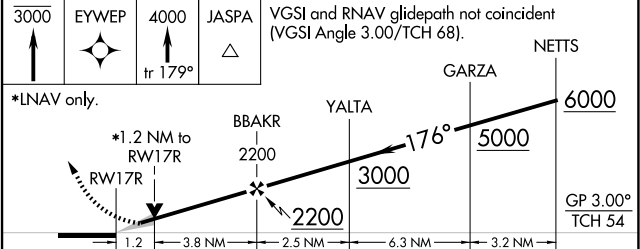
## RADAR REQUIRED



ELEV <b>607</b>	<b>D</b>	TDZE <b>567</b>
-----------------	----------	-----------------



HIRL all Rwys  
REIL Rwys 13L and 31L  
TDZL/RCLS all Rwys except 13L and 31L



CATEGORY	A	B	C	D
LPV DA		767/18	200 (200-½)	
LNAV/VNAV DA		1066/60	499 (500-1¼)	
LNAV MDA	1000/24	433 (400-½)	1000/40	433 (400-¾)

SC-2, 19 MAR 2026 to 16 APR 2026

SC-2, 19 MAR 2026 to 16 APR 2026