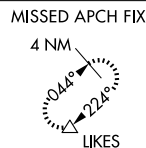
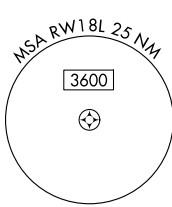
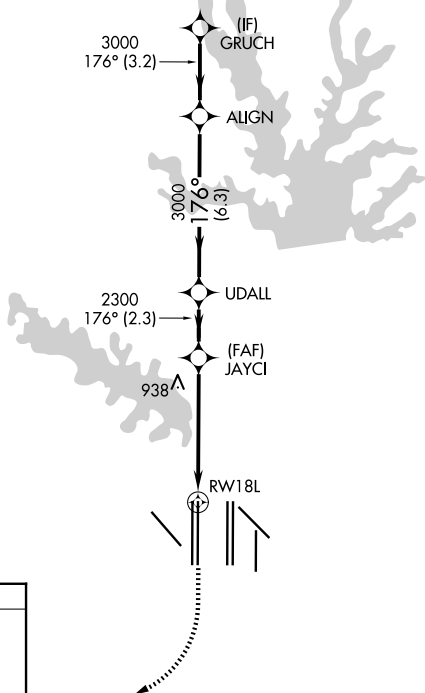


WAAS CH <b>86807</b> <b>W18A</b>	APP CRS <b>176°</b>	Rwy Ldg <b>13401</b> TDZE <b>602</b> Apt Elev <b>606</b>
--	------------------------	--

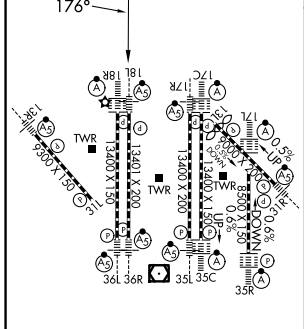
# RNAV (GPS) RWY 18L

DALLAS-FORT WORTH INTL (DFW)

RADAR required for procedure entry. RNP APCH.		MALSR 	MISSED APPROACH: Climb to 1100, then climbing right turn to 3000 direct LIKES and hold.
Simultaneous approach authorized with Rwy 17L/C/R. For uncompensated Baro-VNAV systems, LNAV/VNAV NA below -4°C or above 54°C. LNAV procedure NA during simultaneous operations. Use of FD or AP providing RNAV track guidance required during simultaneous operations. For inop ALS, increase LNAV/VNAV all Cats visibility to RVR 6000 and LNAV Cats C and D visibility to 1¼ SM.			
D-ATIS <b>123.775</b>	LONE STAR APP CON <b>118.425</b>	DFW TOWER <b>126.55 127.5 (E)</b> <b>124.15 134.9 (W)</b>	GND CON <b>121.65 121.8 (E)</b> <b>121.85 (W)</b>



ELEV 606	<b>D</b>	TDZE 602
----------	----------	----------



1100	3000	LIKES	VGSI and RNAV glidepath not coincident (VGSI Angle 3.00/TCH 70).	GRUCH
				4000
*INAV only.		JAYCI	UDALL	ALIGN
	*1.7 NM to RWY18L	2300	3000	3000
				GP 3.00° TCH 55
	1.7 NM	3.5 NM	2.3 NM	6.3 NM
				3.2 NM

CATEGORY	A	B	C	D
LPV DA		802/18	200 (200-½)	
LNAV/VNAV DA		1013/40	411 (500-¾)	
LNAV MDA	1220/24	618 (700-½)	1220-1⅜	618 (700-1⅜)

HIRL all Rwys  
REIL Rwy 13L and 31L  
TDZL/RCLS all Rwy except 13L and 31L