

| | | |
|--|------------------------|--|
| WAAS CH 45805 W35B | APP CRS 356° | Rwy Ldg 13400 TDZE 564 Apt Elev 607 |
|--|------------------------|--|

RNAV (GPS) RWY 35L

DALLAS-FORT WORTH INTL (DFW)

▼ For uncompensated Baro-VNAV systems, LNAV/VNAV NA below -4°C (25°F) or above 54°C (130°F). Simultaneous approach authorized with Rwy 36L/R and Rwy 35R. DME/DME RNP-0.3 NA. LNAV procedure NA during simultaneous operations. Use of FD or AP providing RNAV track guidance required during simultaneous operations.

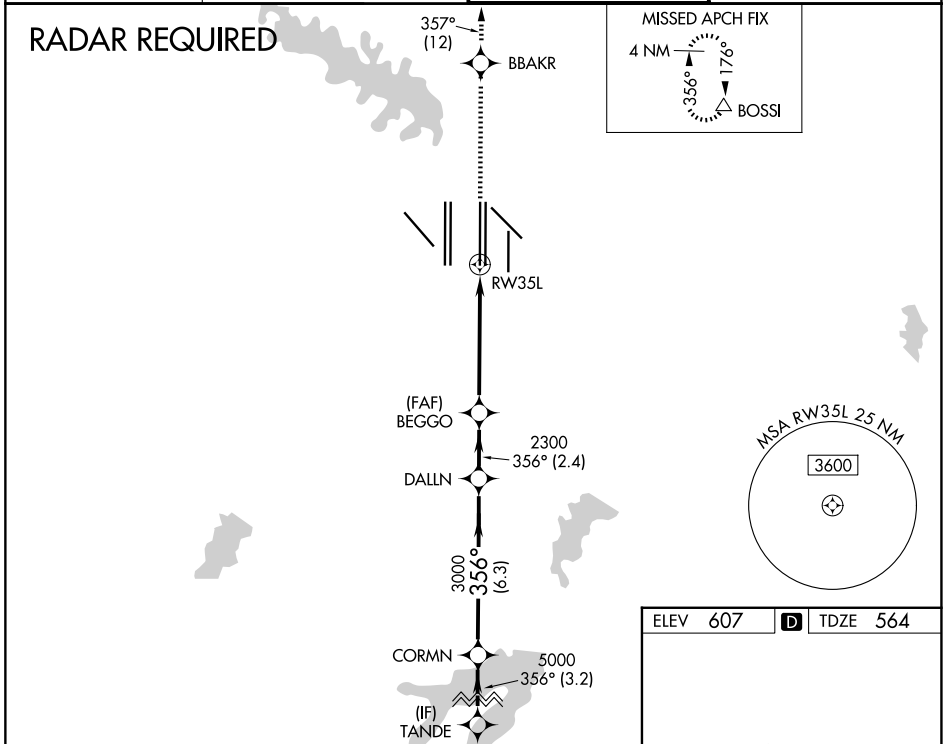
MALSR



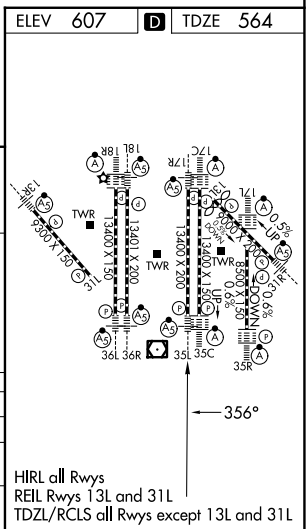
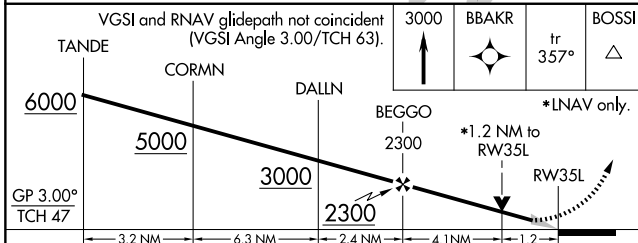
MISSED APPROACH:
Climb to 3000 direct BBAKR and on track 357° to BOSSI and hold.

| | | | |
|--------------------------|-------------------------------------|---|---|
| D-ATIS 123.775 | LONE STAR APP CON 127.075 | DFW TOWER 126.55 127.5 (E) 124.15 134.9 (W) | GND CON 121.65 121.8 (E) 121.85 (W) |
|--------------------------|-------------------------------------|---|---|

RADAR REQUIRED



ELEV 607 **D** TDZE 564



HIRL all Rwys
REIL Rwy 13L and 31L
TDZL/RCLS all Rwys except 13L and 31L

| CATEGORY | A | B | C | D |
|--------------|-----------------------|-----------------------|---|---|
| LPV DA | 764/18 200 (200-1/2) | | | |
| LNAV/VNAV DA | 928/40 364 (400-3/4) | | | |
| LNAV MDA | 1020/24 456 (500-1/2) | 1020/45 456 (500-7/8) | | |