

WAAS CH 93805 W36B	APP CRS 356°	Rwy Ldg 13400 TDZE 588 Apt Elev 607
--	------------------------	--

RNAV (GPS) RWY 36L

DALLAS-FORT WORTH INTL (DFW)

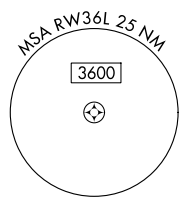
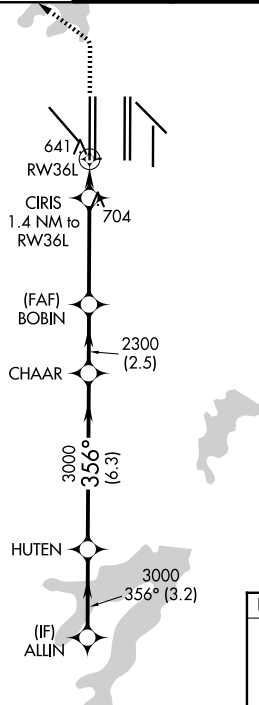
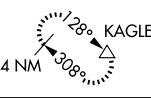
▼ For uncompensated Baro-VNAV systems, LNAV/VNAV NA below -4°C (25°F) or above 54°C (130°F). For inop MALSR, increase LNAV Cat C/D visibility to RVR 5500. Simultaneous approach authorized with Rwy 35L/C/R. DME/DME RNP-0.3 NA. LNAV procedure NA during simultaneous operations. Use of FD or AP providing RNAV track guidance required during simultaneous operations.



MISSED APPROACH: Climb to 1100 then climbing left turn to 3000 direct KAGLE and hold.

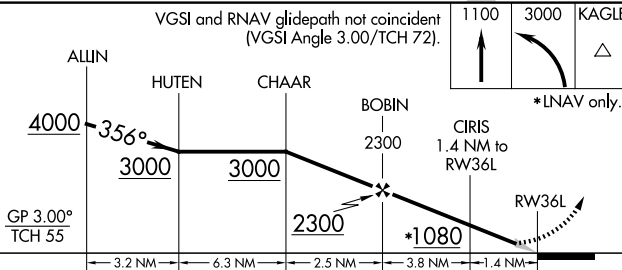
D-ATIS 123.775	LONE STAR APP CON 118.425	DFW TOWER 126.55 127.5 (E) 124.15 134.9 (W)	GND CON 121.65 121.8 (E) 121.85 (W)
--------------------------	-------------------------------------	---	---

MISSED APCH FIX



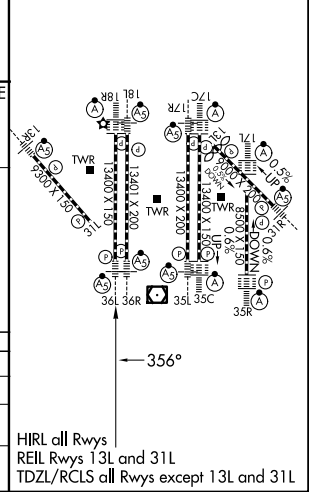
RADAR REQUIRED

VGSI and RNAV glidepath not coincident (VGSI Angle 3.00/TCH 72).



CATEGORY	A	B	C	D
LPV DA		788/18	200 (200-1/2)	
LNAV/VNAV DA		987/45	399 (400-7/8)	
LNAV MDA	960/24	372 (400-1/2)	960/35	372 (400-5/8)

ELEV 607	D TDZE 588
----------	-------------------



HIRL all Rwys
REIL Rwys 13L and 31L
TDZL/RCLS all Rwys except 13L and 31L

SC-2, 19 MAR 2026 to 16 APR 2026

SC-2, 19 MAR 2026 to 16 APR 2026