

WAAS CH 87005 W36A	APP CRS 356°	Rwy Ldg 13401 TDZE 581 Apt Elev 607
--	------------------------	--

RNAV (GPS) RWY 36R

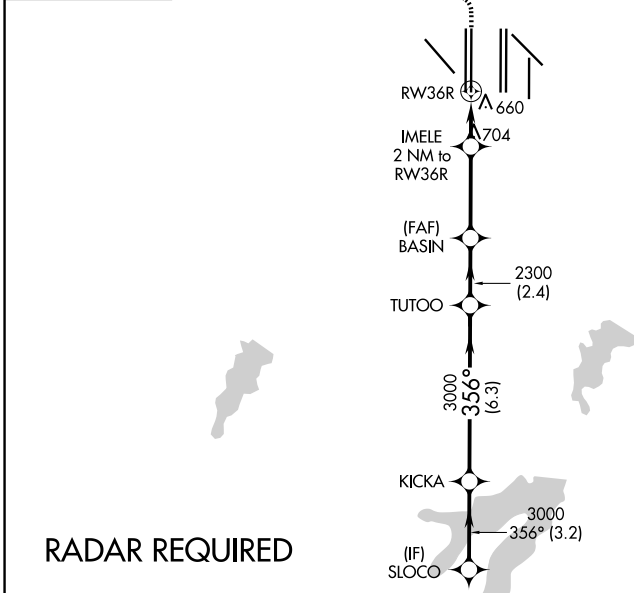
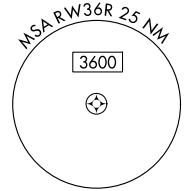
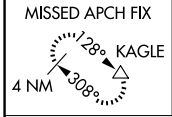
DALLAS-FORT WORTH INTL (DFW)

▼ For uncompensated Baro-VNAV systems, LNAV/VNAV NA below -4°C (25°F) or above 54°C (130°F). For inop MALSRS, increase LNAV Cats C/D visibility to RVR 5500. Simultaneous approach authorized with Rwy 35L/C/R. DME/DME RNP-0.3 NA. LNAV procedure NA during simultaneous operations. Use of FD or AP providing RNAV track guidance required during simultaneous operations.



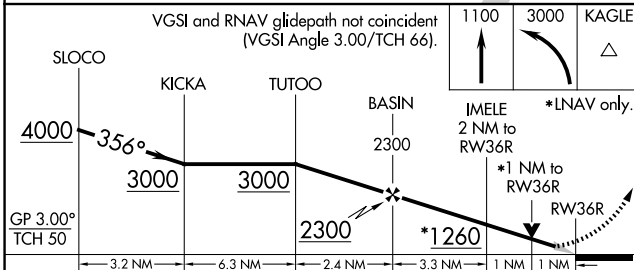
MISSED APPROACH: Climb to 1100 then climbing left turn to 3000 direct KAGLE and hold.

D-ATIS 123.775	LONE STAR APP CON 118.425	DFW TOWER 126.55 127.5 (E) 124.15 134.9 (W)	GND CON 121.65 121.8 (E) 121.85 (W)
--------------------------	-------------------------------------	---	---

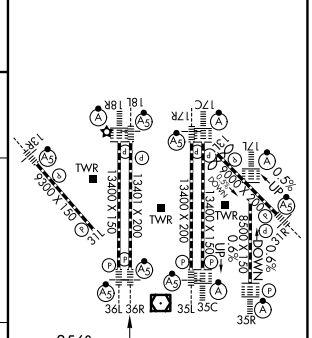


SC-2, 19 MAR 2026 to 16 APR 2026

SC-2, 19 MAR 2026 to 16 APR 2026



ELEV 607	D TDZE 581
----------	-------------------



CATEGORY	A	B	C	D
LPV DA		781/18	200 (200-½)	
LNAV/VNAV DA		941/40	360 (400-¾)	
LNAV MDA	960/24	379 (400-½)	960/35	379 (400-¾)

HIRL all Rwys
REIL Rws 13L and 31L
TDZL/RCLS all Rws except 13L and 31L