

APP CRS 315°	Rwy Ldg 9300 TDZE 581 Apt Elev 607
------------------------	---

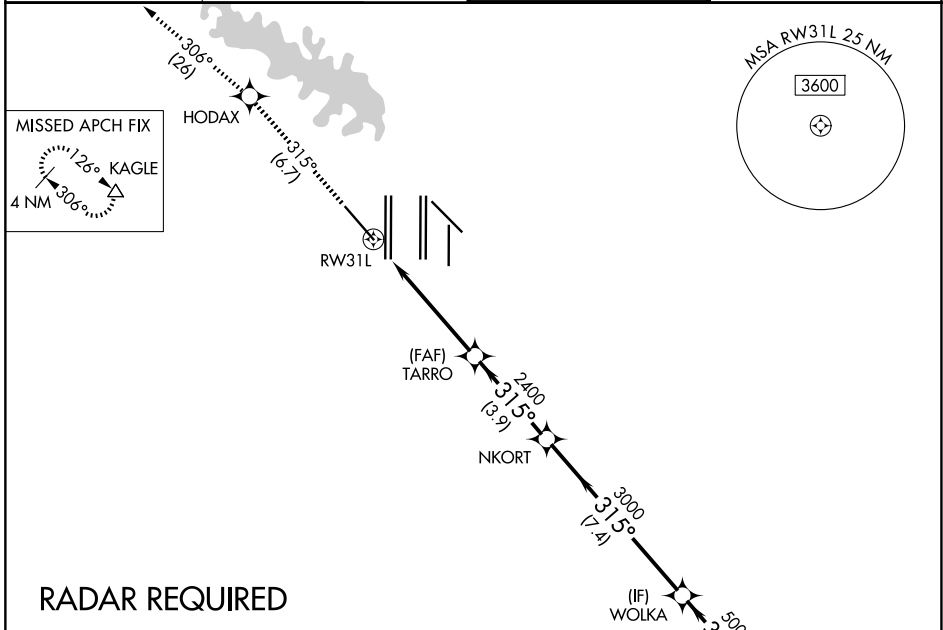
RNAV (RNP) Z RWY 31L

DALLAS-FORT WORTH INTL (DFW)

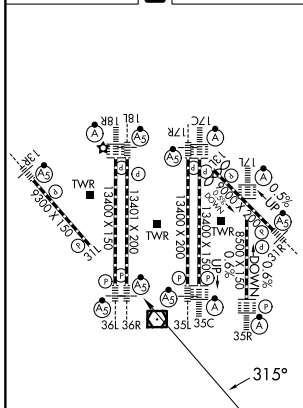
▼ For uncompensated Baro-VNAV systems, procedure NA below -4°C (25°F) or above 54°C (130°F). Simultaneous approach authorized with Rwy 31R. GPS Required. Use of FD or AP providing RNAV track guidance required during simultaneous operations.

MISSED APPROACH: Climb to 3000 on track 315° to HODAX and on track 306° to KAGLE and hold.

D-ATIS 123.775	LONE STAR APP CON 118.425 127.075 119.4	DFW TOWER 126.55 127.5 (E) 124.15 134.9 (W)	GND CON 121.65 121.8 (E) 121.85 (W)
--------------------------	---	---	---

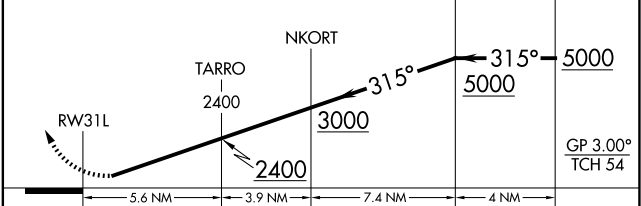


ELEV 607	D	TDZE 581
-----------------	----------	-----------------



HIRL all Rwy's
REIL Rwy's 13L and 31L
TDZL/RCLS all Rwy's except 13L and 31L

3000	HODAX	KAGLE	VGSI and RNAV glidepath not coincident (VGSI Angle 3.13/TCH 72).
↑ fr 315°	✧ tr 306°	△	



CATEGORY	A	B	C	D
RNP 0.30 DA	951/60 370 (400-1¼)			

AUTHORIZATION REQUIRED

SC-2, 19 MAR 2026 to 16 APR 2026

SC-2, 19 MAR 2026 to 16 APR 2026