
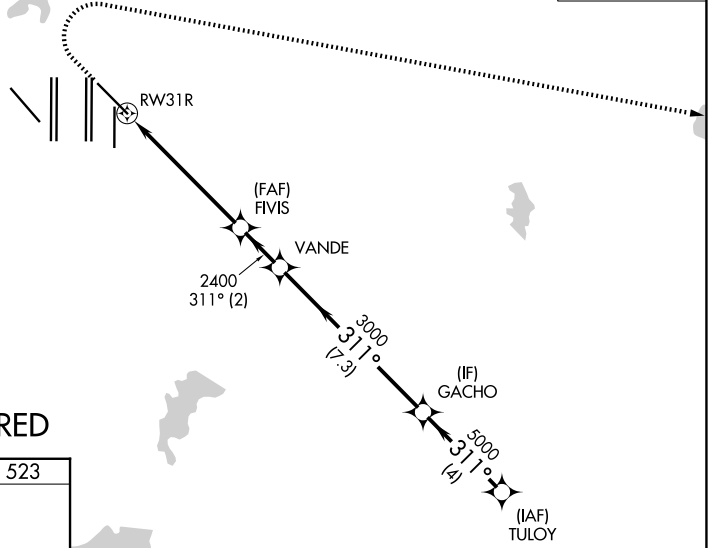
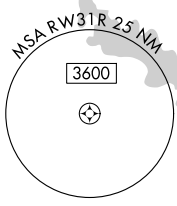


APP CRS <b>311°</b>	Rwy Ldg TDZE Apt Elev	<b>8373</b> <b>523</b> <b>607</b>
------------------------	-----------------------------	---

# RNAV (RNP) Z RWY 31R

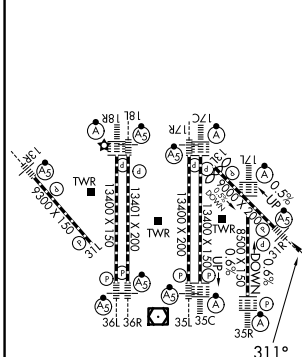
DALLAS-FORT WORTH INTL (DFW)

<p>▼ For uncompensated Baro-VNAV systems, procedure NA below -4°C (25°F) or above 54°C (130°F). For inop MALSR, increase RNP 0.14 all Cats visibility to RVR 5100, RNP 0.23 all Cats visibility to 1/8 mile, RNP 0.30 all Cats visibility to 1/2 mile. Simultaneous approach authorized with Rwy 31L. GPS Required. Use of FD or AP providing RNAV track guidance required during simultaneous operations.</p>		<p>MALSR</p> 	<p>MISSED APPROACH: Climb to 1100 then climbing right turn to 3000 direct SOLDO and hold.</p>
D-ATIS <b>123.775</b>	LONE STAR APP CON <b>135.5 125.2</b>	DFW TOWER <b>126.55 127.5 (E)</b> <b>124.15 134.9 (W)</b>	GND CON <b>121.65 121.8 (E)</b> <b>121.85 (W)</b>



**RADAR REQUIRED**

ELEV 607	<b>D</b>	TDZE 523
----------	----------	----------



1100	3000	SOLDO	VGSI and RNAV glidepath not coincident (VGSI Angle 3.00/TCH 69).	
<p>FIVIS 2400</p>		<p>GACHO TULYO</p>		
<p>RW31R</p>		<p>311° 5000</p>		
<p>2400</p>		<p>311° 5000</p>		
<p>3000</p>		<p>5000</p>		
<p>2400</p>		<p>GP 3.00° TCH 53</p>		
<p>5.8 NM</p>		<p>7.3 NM</p>		
<p>2 NM</p>		<p>4 NM</p>		
CATEGORY	A	B	C	D
RNP 0.14 DA		838/27	315 (300-5%)	
RNP 0.23 DA		928/44	405 (400-7%)	
RNP 0.30 DA		987/55	464 (400-1)	

HIRL all Rwys  
REIL Rwys 13L and 31L  
TDZL/RCLS all Rwys except 13L and 31L

**AUTHORIZATION REQUIRED**

SC-2, 19 MAR 2026 to 16 APR 2026

SC-2, 19 MAR 2026 to 16 APR 2026