

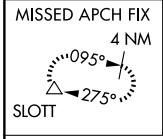
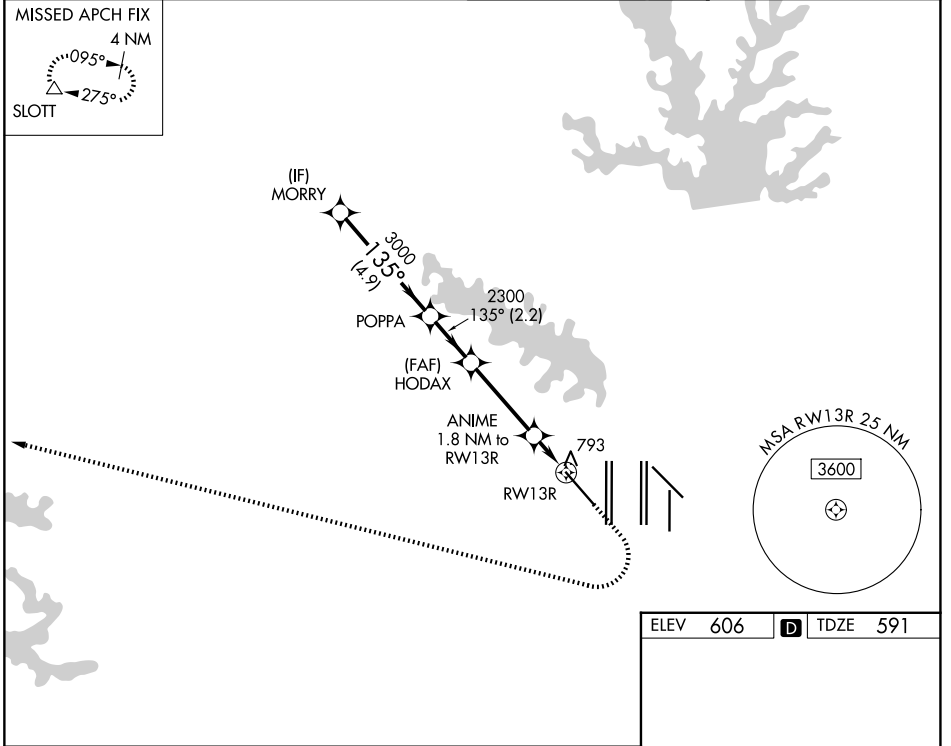
WAAS CH <b>72742</b> <b>W13A</b>	APP CRS <b>135°</b>	Rwy Ldg TDZE Apt Elev	<b>9300</b> <b>591</b> <b>606</b>
--	------------------------	-----------------------------	---

# RNAV (GPS) Y RWY 13R

DALLAS-FORT WORTH INTL (DFW)

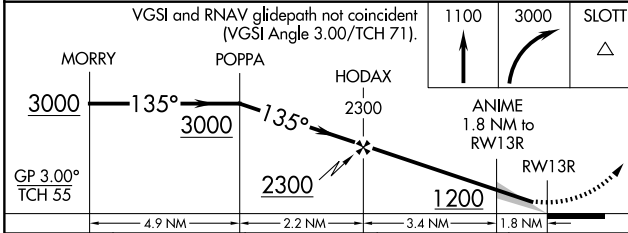
RNP APCH - GPS.	MALSR	MISSED APPROACH: Climb to 1100 then climbing right turn to 3000 direct SLOTT and hold.
▼ For uncompensated Baro-VNAV systems, LNAV/VNAV NA below -8° C or above 54° C. For inop ALS, increase LNAV/VNAV all Cats visibility to RVR 6000 and LNAV Cat C/D visibility to 1½ SM.		

D-ATIS <b>123.775</b>	LONE STAR APP CON <b>133.15 118.1</b>	DFW TOWER <b>126.55 127.5 (E)</b> <b>124.15 134.9 (W)</b>	GND CON <b>121.65 121.8 (E)</b> <b>121.85 (W)</b>
--------------------------	--	---	---



SC-2, 19 MAR 2026 to 16 APR 2026

SC-2, 19 MAR 2026 to 16 APR 2026



CATEGORY	A	B	C	D
LPV DA		791/18	200 (200-½)	
LNAV/VNAV DA		991/35	400 (400-¾)	
LNAV MDA	1080/24	489 (500-½)	1080/50	489 (500-1)

ELEV 606	<b>D</b> TDZE 591
----------	-------------------

HIRL all Rws  
REIL Rws 13L and 31L  
TDZL/RCLS all Rws except 13L and 31L