

WAAS CH <b>99703</b> <b>W31A</b>	APP CRS <b>315°</b>	Rwy Ldg <b>9300</b> TDZE <b>581</b> Apt Elev <b>607</b>
--	------------------------	---

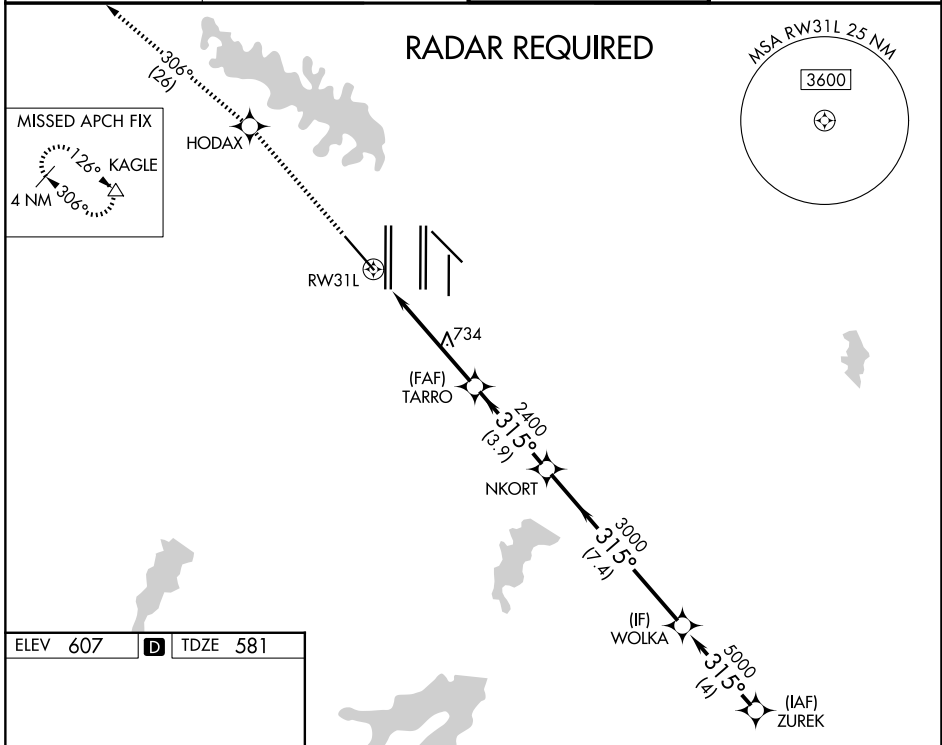
# RNAV (GPS) Y RWY 31L

DALLAS-FORT WORTH INTL (DFW)

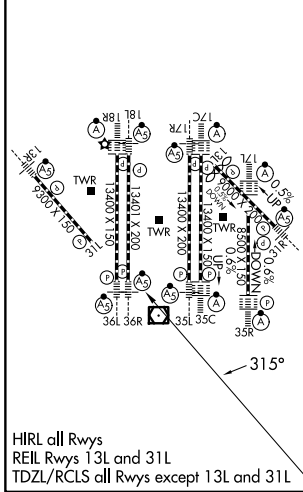
⚠ For uncompensated Baro-VNAV systems, LNAV/VNAV NA below -4°C (25°F) or above 54°C (130°F). Simultaneous approach authorized with Rwy 31R. DME/DME RNP-0.3 NA. LNAV procedure NA during simultaneous operations. Use of FD or AP providing RNAV track guidance required during simultaneous operations.

MISSED APPROACH: Climb to 3000 direct HODAX and on track 306° to KAGLE and hold.

D-ATIS <b>123.775</b>	LONE STAR APP CON <b>118.425 127.075 119.4</b>	DFW TOWER <b>126.55 127.5 (E)</b> <b>124.15 134.9 (W)</b>	GND CON <b>121.65 121.8 (E)</b> <b>121.85 (W)</b>
--------------------------	---	---	---



ELEV 607	<b>D</b>	TDZE 581
----------	----------	----------



DALLAS-FORT WORTH, TEXAS  
Amdt 1B 18SEP14

3000	HODAX	tr 306°	KAGLE	VGSI and RNAV glidepath not coincident (VGSI Angle 3.13/TCH 72).
*LNAV only.		TARRO	NKORT	WOLKA
*1.2 NM to RWY 31L		2400	3000	5000
RWY 31L		2400	3000	5000
1.2		4.4 NM	3.9 NM	7.4 NM
4 NM				4 NM
CATEGORY	A	B	C	D
LPV DA		831/40	250 (300-¾)	
LNAV/VNAV DA		907/50	326 (400-1)	
LNAV MDA	1060/55	479 (500-1)	1060-1¾	479 (500-1¾)

# RNAV (GPS) Y RWY 31L

SC-2, 19 MAR 2026 to 16 APR 2026

SC-2, 19 MAR 2026 to 16 APR 2026