

NDB CSS 414	APP CRS 223°	Rwy Ldg TDZE Apt Elev	5097 979 980
-----------------------	------------------------	-----------------------------	---

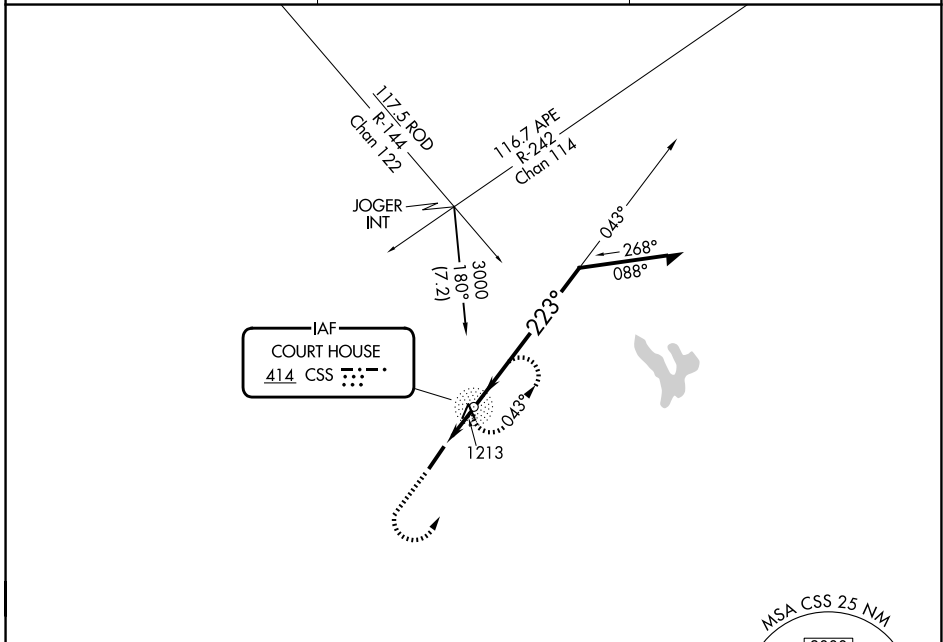
NDB RWY 23

FAYETTE COUNTY (I23)

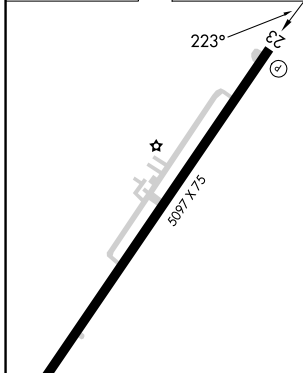
⚠ When local altimeter setting not received, use Wilmington Air Park altimeter setting and increase all MDAs 60 feet, and Circling visibility Cat C ¼ SM. Procedure NA at night. Rwy 23 helicopter visibility reduction below 1 SM NA.

MISSED APPROACH: Climb to 2000, then climbing left turn to 2600 direct CSS NDB and hold.

AWOS-3 118.775	COLUMBUS APP CON 134.0 279.6	UNICOM 122.8 (CTAF)
--------------------------	--	-------------------------------



ELEV	980	TDZE	979
------	------------	------	------------



2000 2600 CSS

↑ ↶ ○

VGSI and descent angles not coincident (VGSI Angle 3.00/TCH 26).

3.48° TCH 40

1.9 NM

043° 2600

223° 1700

CSS NDB

Remain within 10 NM

CATEGORY	A		B		C		D	
	S-23	1580-1		601 (600-1)		1580-1¾ 601 (600-1¾)		1580-2 601 (600-2)
CIRCLING	1580-1 600 (600-1)		1640-1 660 (700-1)		1640-1¾ 660 (700-1¾)		1660-2¼ 680 (700-2¼)	