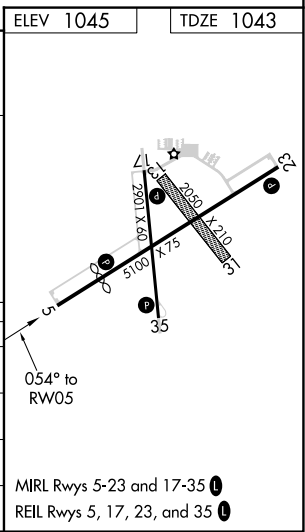
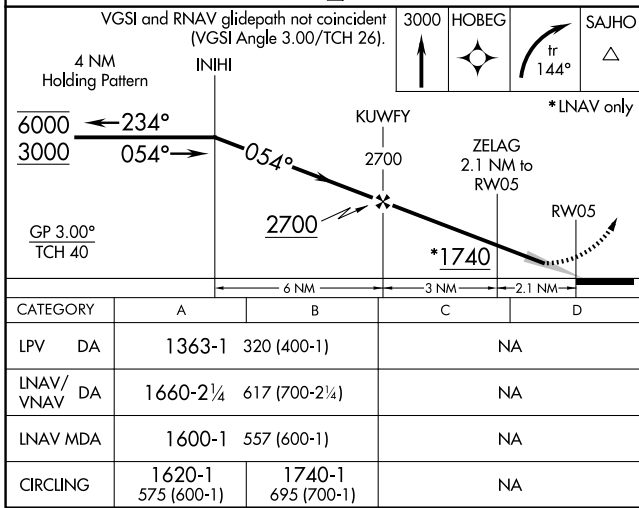
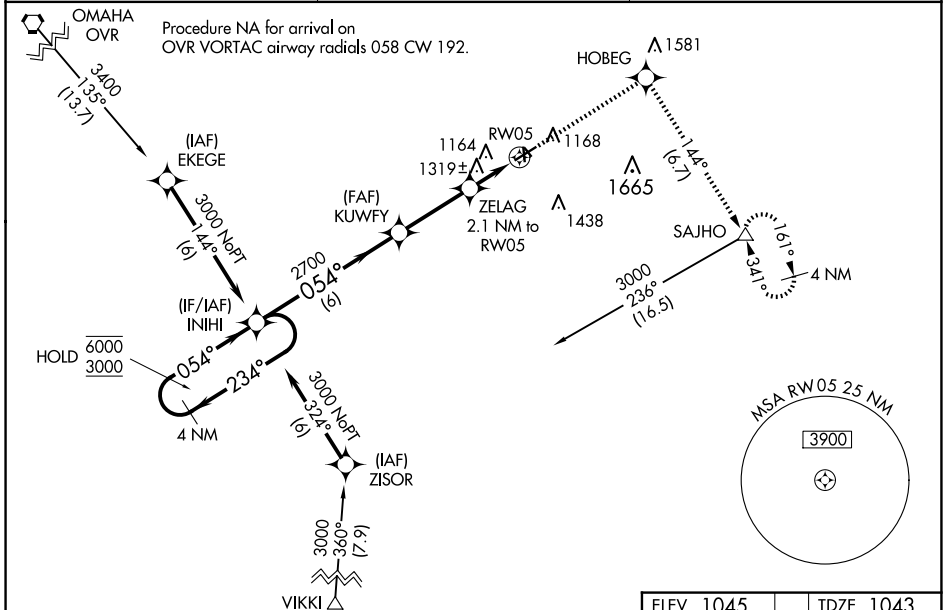


|  |                        |   |
|--|------------------------|---|
| WAAS<br>CH <b>42927</b><br><b>W05A</b> | APP CRS<br><b>054°</b> | Rwy ldg<br>TDZE <b>1043</b><br>Apt Elev <b>1045</b> |
|--|------------------------|---|

# RNAV (GPS) RWY 5

RED OAK MUNI (RDK)

|   |                                     |   |
|---|-------------------------------------|---|
| RNP APCH  |                                     | MISSED APPROACH: Climb to 3000 direct HOBEG and right turn on track 144° to SAJHO and hold. |
| <p><b>▽</b></p> <p><b>▲</b> Circling NA to Rwys 13 and 31. For uncompensated Baro-VNAV systems, LNAV/VNAV NA below -17° C or above 54° C.</p> |                                     |   |
| AWOS-3P<br><b>123.925</b>   | OMAHA APP CON<br><b>124.5 263.0</b> | UNICOM<br><b>122.8 (CTAF) 0</b>   |



NC-3, 19 MAR 2026 to 16 APR 2026

NC-3, 19 MAR 2026 to 16 APR 2026