

RED OAK, IOWA


AL-6051 (FAA)

21084

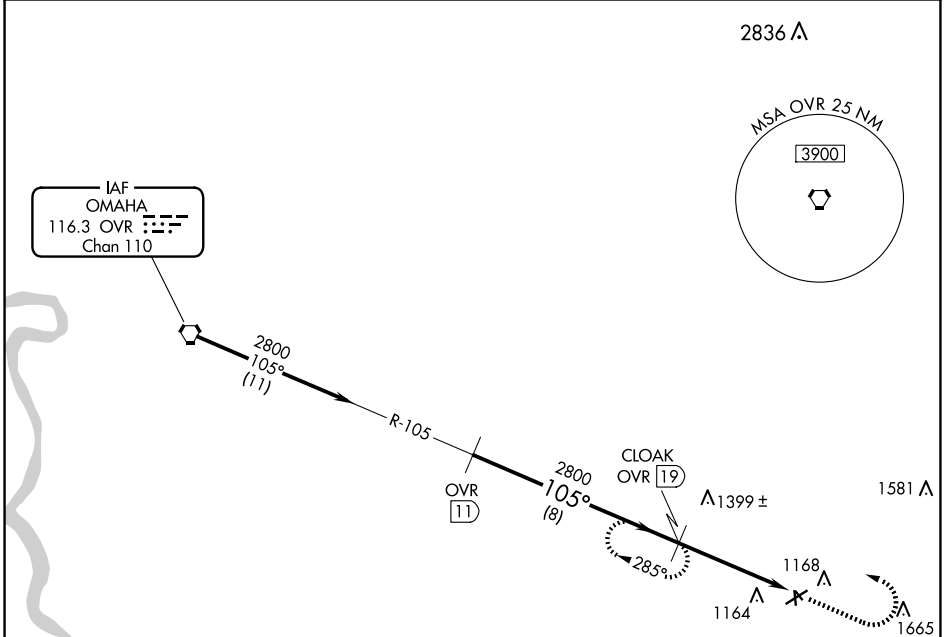
VORTAC OVR <b>116.3</b> Chan <b>110</b>	APP CRS <b>105°</b>	Rwy Idg TDZE Apt Elev	<b>N/A</b> <b>N/A</b> <b>1045</b>
---	------------------------	-----------------------------	---

# VOR/DME-A

RED OAK MUNI (RDK)

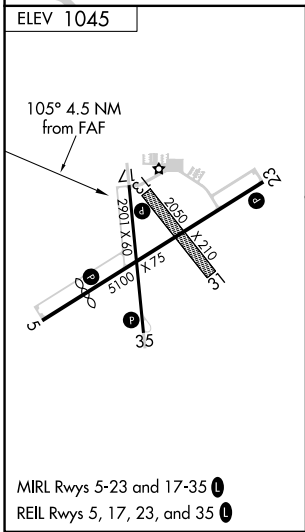
 Circling NA to Rwys 13 and 31.
 MISSED APPROACH: Climb to 2800 then left turn via OVR R-105 to CLOAK/19 DME and hold.


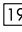

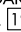
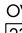
AWOS-3P <b>123.925</b>	OMAHA APP CON <b>124.5 263.0</b>	UNICOM <b>122.8</b> (CTAF) 
---------------------------	-------------------------------------	---



NC-3, 19 MAR 2026 to 16 APR 2026

NC-3, 19 MAR 2026 to 16 APR 2026



Procedure Turn NA	OVR  <b>11</b>	CLOAK OVR  <b>19</b>	2800	 OVR R-105	CLOAK OVR  <b>19</b>
	2800	105°	2800	105°	OVR  <b>23.5</b>
8 NM		4.5 NM			
CATEGORY	A	B	C	D	
CIRCLING	1660-1 615 (700-1)	1740-1¼ 695 (700-1¼)	NA		

RED OAK, IOWA  
Amdt 5A 25MAR21

41°01'N-95°16'W

# RED OAK MUNI (RDK)

## VOR/DME-A