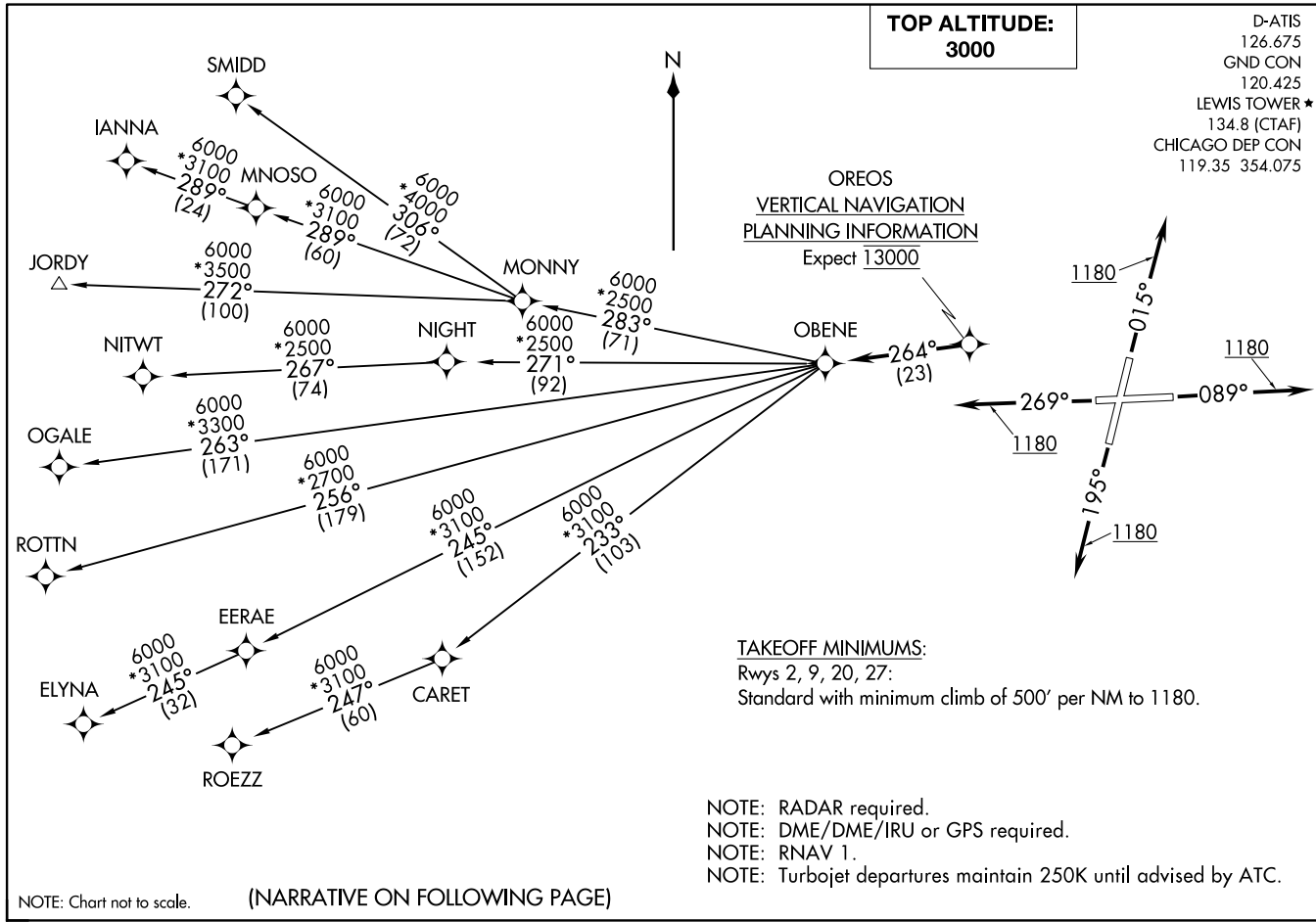


OBENE THREE DEPARTURE (RNAV)  
(OBENE3,OBENE) 08NOV18

CHICAGO/ROMEOVILLE, ILLINOIS  
LEWIS UNIVERSITY (LOT)



NOTE: Chart not to scale.

(NARRATIVE ON FOLLOWING PAGE)

D-ATIS  
126.675  
GND CON  
120.425  
LEWIS TOWER ★  
134.8 (CTAF)  
CHICAGO DEP CON  
119.35 354.075

(OBENE3,OBENE) 22333  
OBENE THREE DEPARTURE (RNAV)  
AL-6063 (FAA)

LEWIS UNIVERSITY (LOT)  
CHICAGO/ROMEOVILLE, ILLINOIS

OBENE THREE DEPARTURE (RNAV) AL-6063 (FAA)



DEPARTURE ROUTE DESCRIPTION

TAKEOFF RUNWAY 2: Climb heading 015° to 1180, then continue climb on 015° heading or as assigned by ATC, for vectors to OREOS. Thence . . . .

TAKEOFF RUNWAY 9: Climb heading 089° to 1180, then continue climb on 089° heading or as assigned by ATC, for vectors to OREOS. Thence . . . .

TAKEOFF RUNWAY 20: Climb heading 195° to 1180, then continue climb on 195° heading or as assigned by ATC, for vectors to OREOS. Thence . . . .

TAKEOFF RUNWAY 27: Climb heading 269° to 1180, then continue climb on 269° heading or as assigned by ATC, for vectors to OREOS. Thence . . . .

. . . . on depicted route to OBENE, maintain 3000. Expect filed altitude 10 minutes after departure.

ELYNA TRANSITION (OBENE3.ELYNA)

IANNA TRANSITION (OBENE3.IANNA)

JORDY TRANSITION (OBENE3.JORDY)

MNOSO TRANSITION (OBENE3.MNOSO): For Minneapolis terminal area arrivals or assigned by ATC.

NITWT TRANSITION (OBENE3.NITWT)

OGALE TRANSITION (OBENE3.OGALE)

ROTTN TRANSITION (OBENE3.ROTTN)

ROEZZ TRANSITION (OBENE3.ROEZZ)

SMIDD TRANSITION (OBENE3.SMIDD)

EC-3, 19 MAR 2026 to 16 APR 2026

EC-3, 19 MAR 2026 to 16 APR 2026