

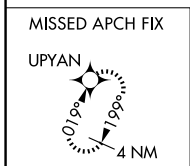
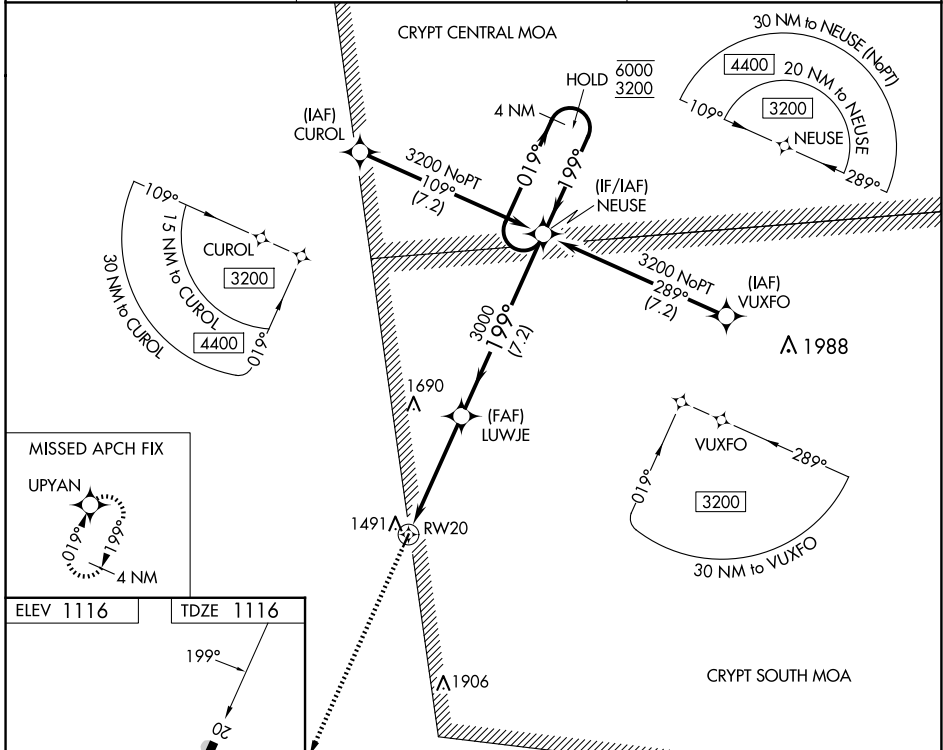
APP CRS	Rwy Idg	2801
199°	TDZE	1116
	Apt Elev	1116

RNAV (GPS) RWY 20

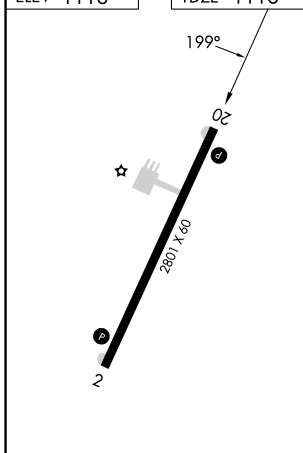
JAMES G WHITING MEML FLD (MEY)

RNP APCH - GPS.		MISSED APPROACH: Climb to 3100 direct UPYAN and hold.
<p>▼ Procedure NA at night. Rwy 20 helicopter visibility reduction below 1 SM NA.</p> <p>▲ NA Use Sioux City altimeter setting, when not received use Denison altimeter setting and increase all MDAs 20 feet and increase visibility LNAV Cat C ½ SM and visibility Circling Cat C ¼ SM.</p>		

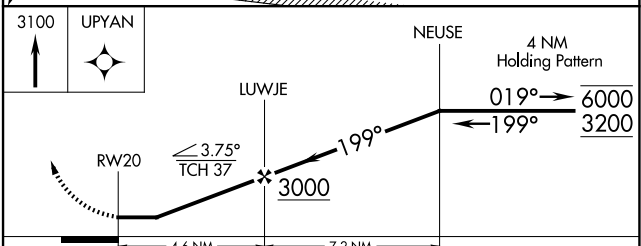
SUX ASOS 119.45 270.8	SIoux CITY APP CON★ 124.6 307.0	UNICOM 122.8 (CTAF)
---------------------------------	---	-------------------------------



ELEV 1116	TDZE 1116
-----------	-----------



REIL Rwy 20 **1**
MIRL Rwy 2-20 **1**



CATEGORY	A	B	C	D
LNAV MDA	1860-1 744 (800-1)	1860-1¼ 744 (800-1¼)	1860-2 744 (800-2)	NA
C CIRCLING	1880-1 764 (800-1)	1940-1¼ 824 (900-1¼)	1980-2½ 864 (900-2½)	NA

NC-3, 19 MAR 2026 to 16 APR 2026

NC-3, 19 MAR 2026 to 16 APR 2026