

WAAS CH <b>57903</b> <b>W08A</b>	APP CRS <b>083°</b>	Rwy Idg TDZE Apt Elev	<b>5102</b> <b>3260</b> <b>3279</b>
--	------------------------	-----------------------------	---

# RNAV (GPS) RWY 8

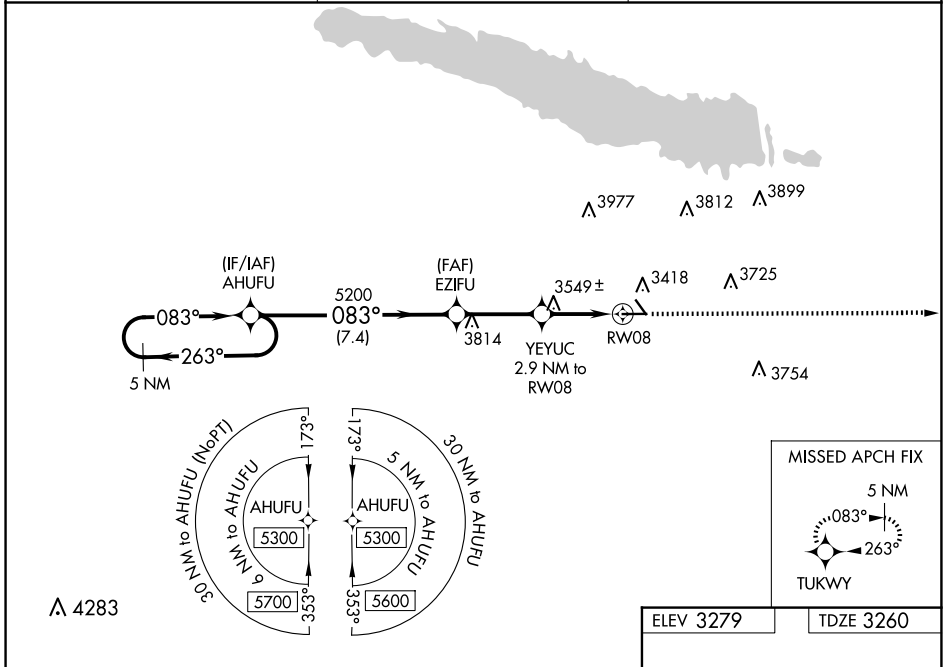
SEARLE FLD (OGA)

RNP APCH.

**▽** For uncompensated Baro-VNAV systems, LNAV/VNAV NA below -21°C or above 54°C. When local altimeter setting not received, use Imperial altimeter setting and increase all DA 86 feet and all MDA 100 feet, increase LPV all Cats visibility 1/8 SM, LNAV/VNAV all Cats and Circling Cat B visibility 1/4 SM. Baro-VNAV NA when using Imperial altimeter setting.

**▲** MISSED APPROACH: Climb to 5200 direct TUKWY and hold.

AWOS-3 <b>121.275</b>	DENVER CENTER <b>132.7 397.85</b>	UNICOM <b>122.8 (CTAF) 0</b>
--------------------------	--------------------------------------	---------------------------------



NC-2, 19 MAR 2026 to 16 APR 2026

NC-2, 19 MAR 2026 to 16 APR 2026

5 NM Holding Pattern		AHUFU		5200		TUKWY	
5300		←263°		083°→		*LNAV only.	
GP 3.00°		TCH 40		*4200		RW08	
7.4 NM		3.1 NM		2.9 NM		5102 X 75	
CATEGORY		A		B		C	
LPV DA		3510-1		250 (300-1)		NA	
LNAV/VNAV DA		3865-2¼		605 (600-2¼)		NA	
LNAV MDA		3800-1		540 (600-1)		NA	
CIRCLING		3940-1 661 (700-1)		4000-1 721 (800-1)		NA	
		5102 X 75		←0.3% UP		083° to RW08	
		MRL Rwy 8-26 and 13-31 0					