

WAAS CH <b>87028</b> <b>W35A</b>	APP CRS <b>350°</b>	Rwy Idg <b>6008</b> TDZE <b>308</b> Apt Elev <b>312</b>
--	------------------------	---

# RNAV (GPS) RWY 35

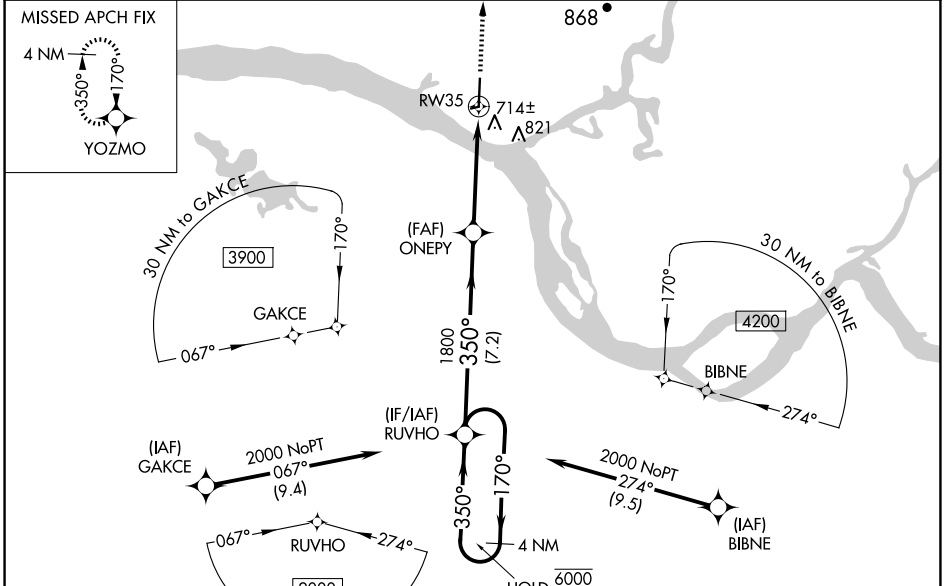
ST MARY'S (KSM)(PASM)

RNP APCH - GPS.

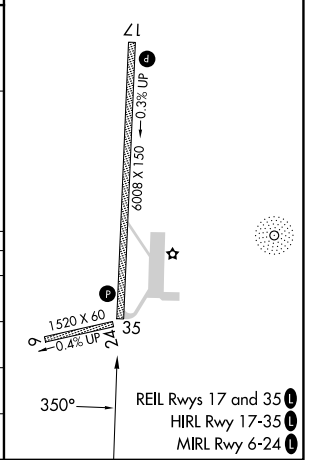
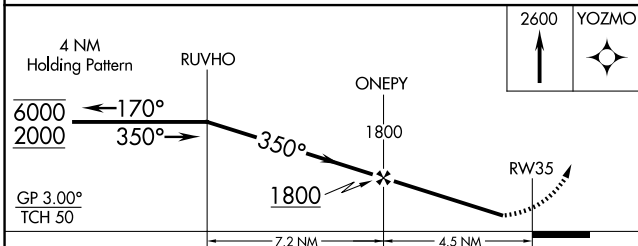
**⚠** Circling NA east of Rwy 17-35. Rwy 35 helicopter visibility reduction below 1 SM NA. Baro-VNAV NA when using Mountain Village altimeter setting. For uncompensated Baro-VNAV systems, LNAV/VNAV NA below -19°C or above 54°C. When local altimeter setting not received, use Mountain Village altimeter setting and increase all DA 29 feet and all MDAs 40 feet and LNAV visibility Cat C/D 1/8 SM and Circling visibility Cat C 1/8 SM, Cat D 1/4 SM.

MISSED APPROACH: Climb to 2600 direct YOZMO and hold.

AWOS-3P <b>128.7</b>	ANCHORAGE CENTER <b>124.0</b>	CTAF <b>122.3</b>
-------------------------	----------------------------------	----------------------



ELEV 312	TDZE 308
----------	----------



CATEGORY	A	B	C	D
LPV DA		508-1	200 (200-1)	
LNAV/VNAV DA		884-2	576 (600-2)	
LNAV MDA	960-1	652 (700-1)	960-1 7/8	652 (700-1 7/8)
<b>C</b> CIRCLING	960-1	648 (700-1)	960-1 7/8	960-2
			648 (700-1 7/8)	648 (700-2)

AK, 19 MAR 2026 to 14 MAY 2026

AK, 19 MAR 2026 to 14 MAY 2026

- REL Rwy 17 and 35
- HIRL Rwy 17-35
- MIRL Rwy 6-24