

(CHIEF9.MCI) 25051  
**CHIEF NINE DEPARTURE**

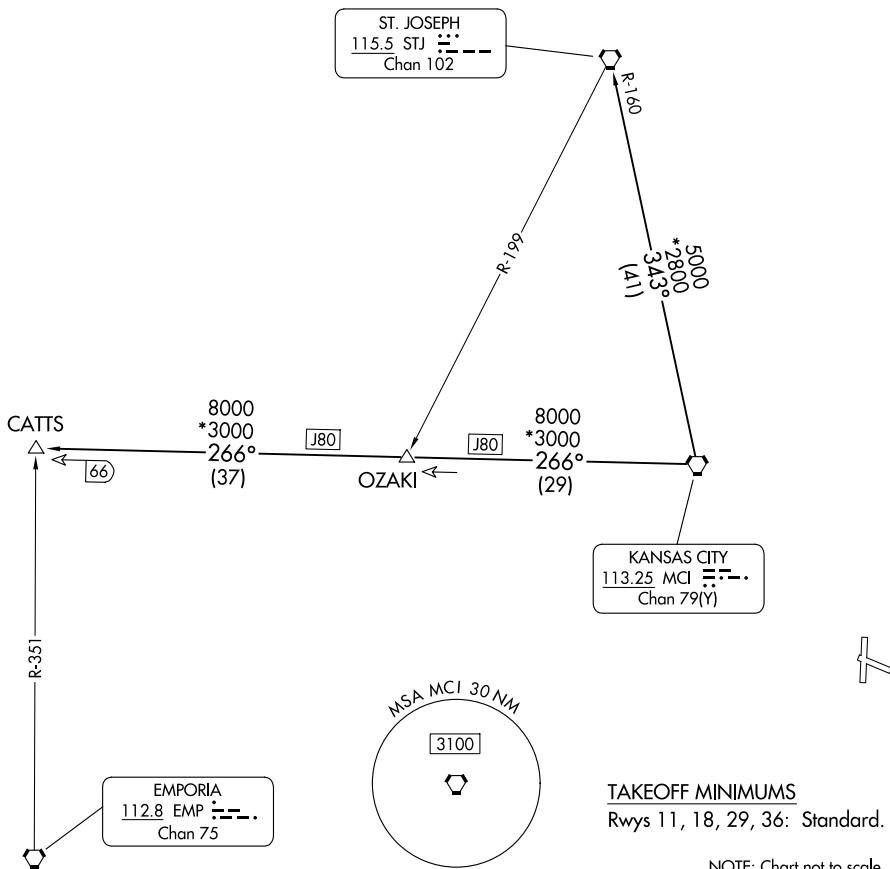
AL-6104 (FAA)

KANSAS CITY/LEE'S SUMMIT RGNL (LXT)  
 LEE'S SUMMIT, MISSOURI

**TOP ALTITUDE:  
 10000**

RADAR required.

KANSAS CITY DEP CON  
 118.4 307.35  
 CLNC DEL  
 118.45



NC-3, 19 MAR 2026 to 16 APR 2026

NC-3, 19 MAR 2026 to 16 APR 2026



**DEPARTURE ROUTE DESCRIPTION**

TAKEOFF ALL RUNWAYS: Climb on assigned heading for RADAR vectors to appropriate route. Maintain 10000 or as assigned by ATC, expect filed altitude 10 minutes after departure.

CATTS TRANSITION (CHIEF9.CATTS): From over MCI VORTAC on MCI R-266 to CATTS.

ST. JOSEPH TRANSITION (CHIEF9.STJ): From over MCI VORTAC on MCI R-343 and STJ R-160 to STJ VORTAC.

**CHIEF NINE DEPARTURE**  
 (CHIEF9.MCI) 05OCT23

LEE'S SUMMIT, MISSOURI  
 KANSAS CITY/LEE'S SUMMIT RGNL (LXT)