

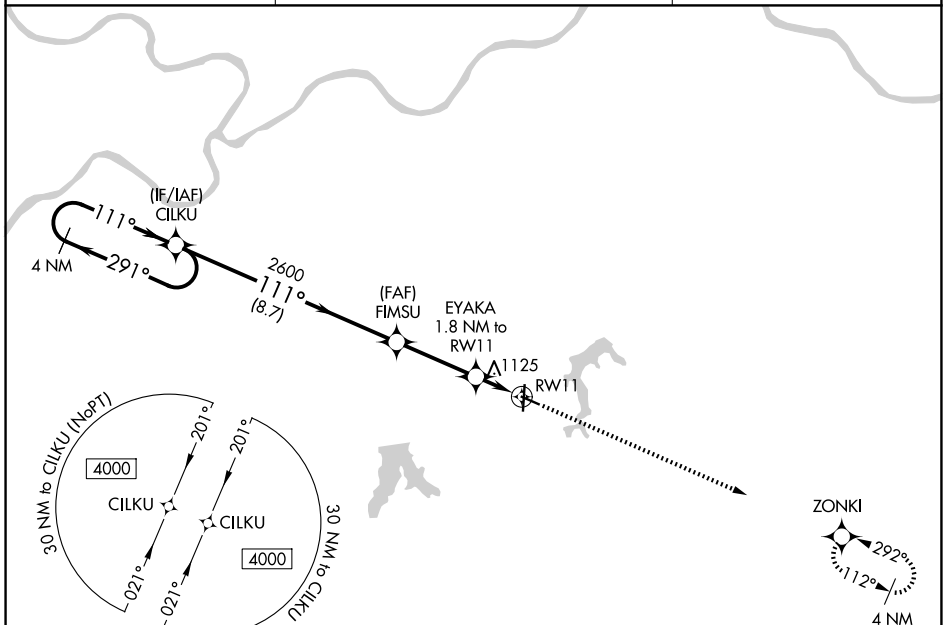
WAAAS CH <b>99405</b> <b>W11A</b>	APP CRS <b>111°</b>	Rwy Ldg TDZE Apt Elev	<b>4000</b> <b>1004</b> <b>1004</b>
-----------------------------------------	------------------------	-----------------------------	-------------------------------------------

# RNAV (GPS) RWY 11

KANSAS CITY/LEE'S SUMMIT RGNL (LX'T)

RNP APCH - GPS.	MISSED APPROACH: Climb to 3100 direct ZONKI and hold.
<p>▼ For uncompensated Baro-VNAV systems, LNAV/VNAV NA below -17°C or above 54°C. Rwy 11 helicopter visibility reduction below ¾ SM NA.</p>	

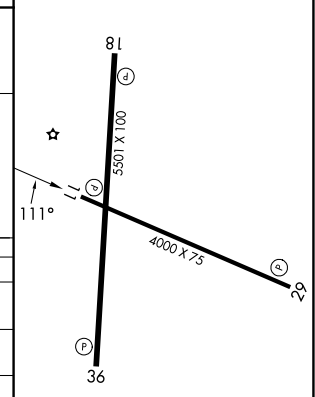
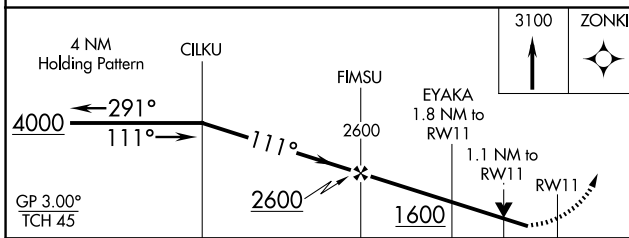
ASOS <b>124.175</b>	KANSAS CITY APP CON <b>118.4 307.35</b>	UNICOM <b>122.8 (CTAF) 0</b>
------------------------	--------------------------------------------	---------------------------------



NC-3, 19 MAR 2026 to 16 APR 2026

NC-3, 19 MAR 2026 to 16 APR 2026

ELEV 1004	TDZE 1004
-----------	-----------



CATEGORY	A	B	C	D
LPV DA		1254-1	250 (300-1)	
LNAV/VNAV DA		1381-1¼	377 (400-1¼)	
LNAV MDA		1380-1	376 (400-1)	
CIRCLING	1440-1 436 (500-1)	1540-1 536 (600-1)	1780-2¼ 776 (800-2¼)	1780-2½ 776 (800-2½)

REL Rws 11, 18, 29 and 36 0  
MRL Rws 11-29 and 18-36 0