

WAAS CH 48805 W36A	APP CRS 001°	Rwy Ldg TDZE Apt Elev	5501 997 1004
--	------------------------	-----------------------------	--

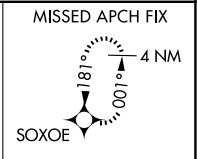
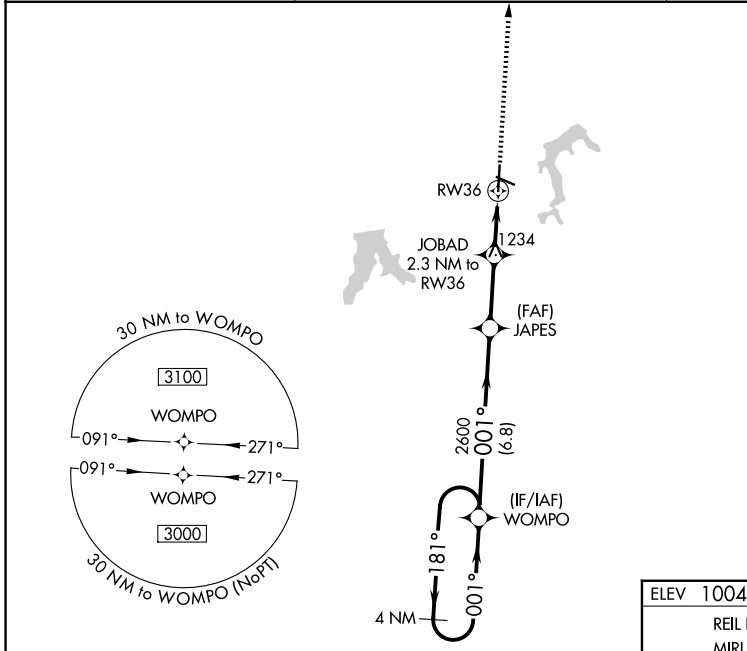
RNAV (GPS) RWY 36

KANSAS CITY/LEE'S SUMMIT RGNL (LX'T)

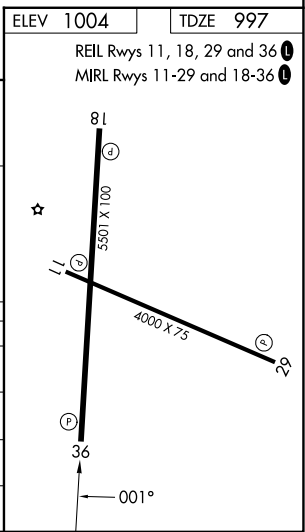
⚠ For uncompensated Baro-VNAV systems, LNAV/VNAV NA below -17°C (2°F) or above 54°C (130°F). Rwy 36 helicopter visibility reduction below ¼ SM NA. DME/DME RNP-0.3 NA. VDP and Baro-VNAV NA when using Kansas City Downtown/Wheeler Fld altimeter setting. When local altimeter setting not received, use Kansas City Downtown/Wheeler Fld altimeter setting: increase LPV DA to 1374 feet and all visibilities ½ SM; increase LNAV/VNAV to 1367 feet and all visibilities ½ SM; increase all MDA 80 feet and LNAV visibility Cats C and D ½ SM, Circling Cats C and D ¼ SM.

MISSED APPROACH: Climb to 3000 direct SOXOE and hold.

ASOS 124.175	KANSAS CITY APP CON 118.4 307.35	UNICOM 122.8 (CTAF)
------------------------	--	-------------------------------



4 NM Holding Pattern		WOMPO		JAPES		JOBAD 2.3 NM to RW36		3000 SOXOE	
3000 ← 181°		← 001° →		2600		*1760		*INAV only	
GP 3.00°		TCH 45		*1.6 NM to RW36		RW36			
		← 6.8 NM		← 2.6 NM		← 0.7		← 1.6 NM	
CATEGORY	A	B		C		D			
LPV DA		1306-7/8		309 (400-7/8)					
LNAV/VNAV DA		1299-7/8		302 (300-7/8)					
LNAV MDA	1540-1	543 (600-1)		1540-1 1/2		543 (600-1 1/2)			
CIRCLING	1540-1	536 (600-1)		1780-2 1/4		776 (800-2 1/4)		1780-2 1/2	
				776 (800-2 1/2)					



NC-3, 19 MAR 2026 to 16 APR 2026

NC-3, 19 MAR 2026 to 16 APR 2026