

ROYAL TWO DEPARTURE

AL-6104 (FAA)

KANSAS CITY/LEE'S SUMMIT RGNL (L,X,T)

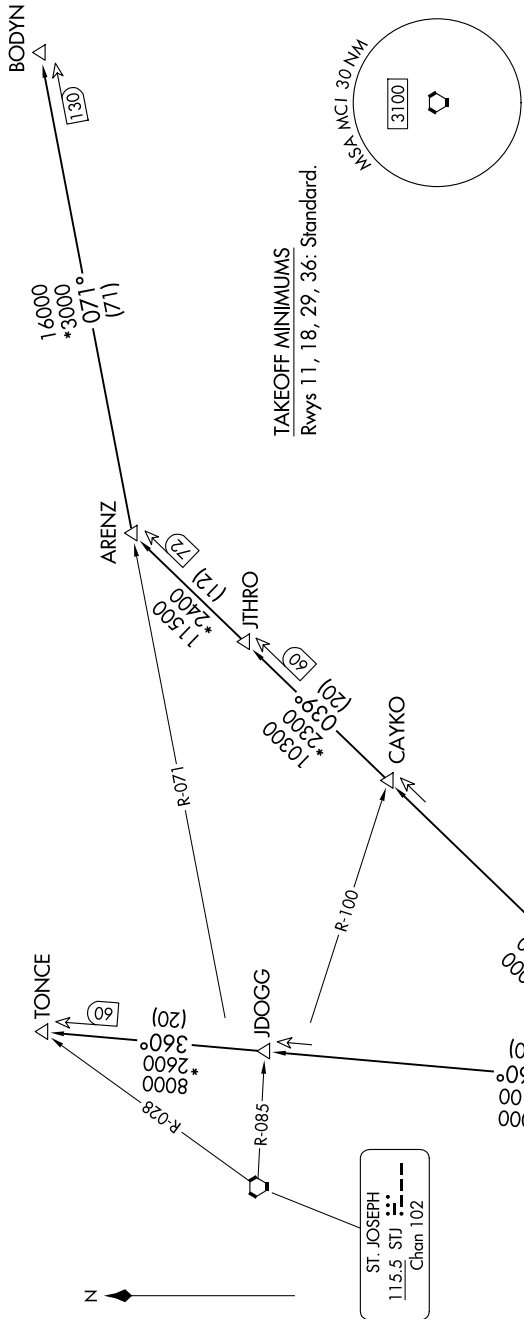
LEE'S SUMMIT, MISSOURI

NC-3, 19 MAR 2026 to 16 APR 2026

KANSAS CITY DEP CON
118.4 307.35
CINC DEL
118.45

RADAR and DME required.

TOP ALTITUDE:
10000



TAKEOFF MINIMUMS
Rwys 11, 18, 29, 36: Standard.

DEPARTURE ROUTE DESCRIPTION

▼ TAKEOFF ALL RUNWAYS: Climb on assigned heading for RADAR vectors to appropriate route. Maintain 10000, expect filed altitude 10 minutes after departure.

ARENZ TRANSITION (ROYAL2.ARENZ): From over MCI VORTAC on MCI R-039 to ARENZ.

BODYN TRANSITION (ROYAL2.BODYN): From over MCI VORTAC on MCI R-039 to ARENZ, then on STJ R-071 to BODYN.

TONCE TRANSITION (ROYAL2.TONCE): From over MCI VORTAC on MCI R-360 to TONCE.

NOTE: Chart not to scale.

NC-3, 19 MAR 2026 to 16 APR 2026

ROYAL TWO DEPARTURE

LEE'S SUMMIT, MISSOURI

KANSAS CITY/LEE'S SUMMIT RGNL (L,X,T)