

GRIFFIN, GEORGIA

AL-6140 (FAA)

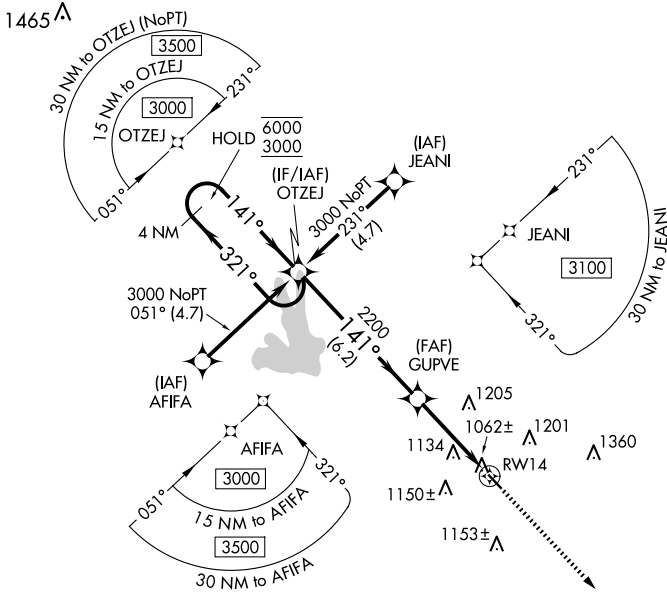
24361

| | | | |
|--|------------------------|-----------------------------|---|
| WAAS CH 70429 W14A | APP CRS 141° | Rwy Idg TDZE Apt Elev | 3201 958 958 |
|--|------------------------|-----------------------------|---|

RNAV (GPS) RWY 14

GRIFFIN-SPALDING COUNTY (6A2)

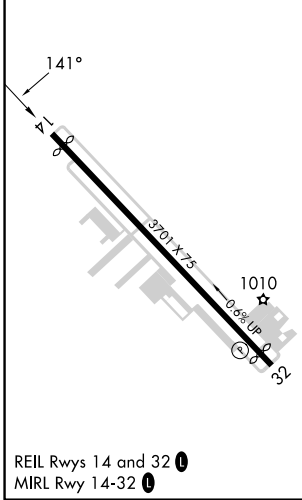
| | | | |
|---|---|---|-----------------------------------|
| RNP APCH - GPS. | | MISSED APPROACH: Climb to 3000 direct LUFEV and hold. | |
| <p>Procedure NA at night. Rwy 14 helicopter visibility reduction below 1 SM NA.</p> | | | |
| AWOS-3 119.750 | ATLANTA APP CON 128.575 343.675 | CLNC DEL 128.575 343.675 | UNICOM 123.075 (CTAF) 0 |



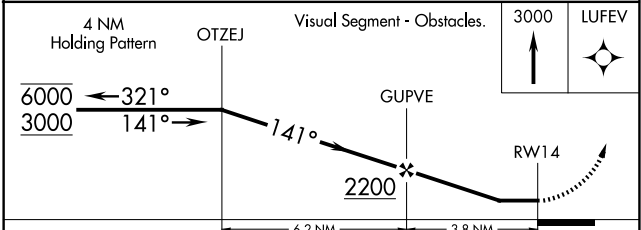
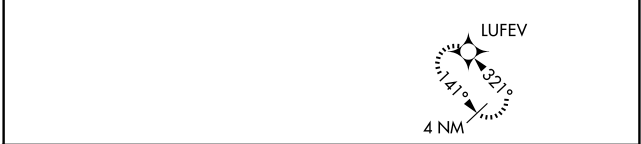
SE-4, 19 MAR 2026 to 16 APR 2026

SE-4, 19 MAR 2026 to 16 APR 2026

| | | |
|----------|----------|----------|
| ELEV 958 | D | TDZE 958 |
|----------|----------|----------|



REIL Rwy 14 and 32
MRL Rwy 14-32



| CATEGORY | A | B | C | D |
|----------|--------|-------------|----|---|
| LP MDA | 1320-1 | 362 (400-1) | NA | |
| LNAV MDA | 1440-1 | 482 (500-1) | NA | |

GRIFFIN, GEORGIA
Amdt 1 26DEC24

33°14'N-84°16'W

GRIFFIN-SPALDING COUNTY (6A2) RNAV (GPS) RWY 14