

WAAS CH <b>48807</b> <b>W04A</b>	APP CRS <b>035°</b>	Rwy Ldg TDZE Apt Elev	<b>7193</b> <b>24</b> <b>26</b>
--	------------------------	-----------------------------	---------------------------------------

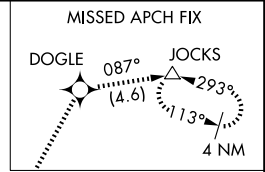
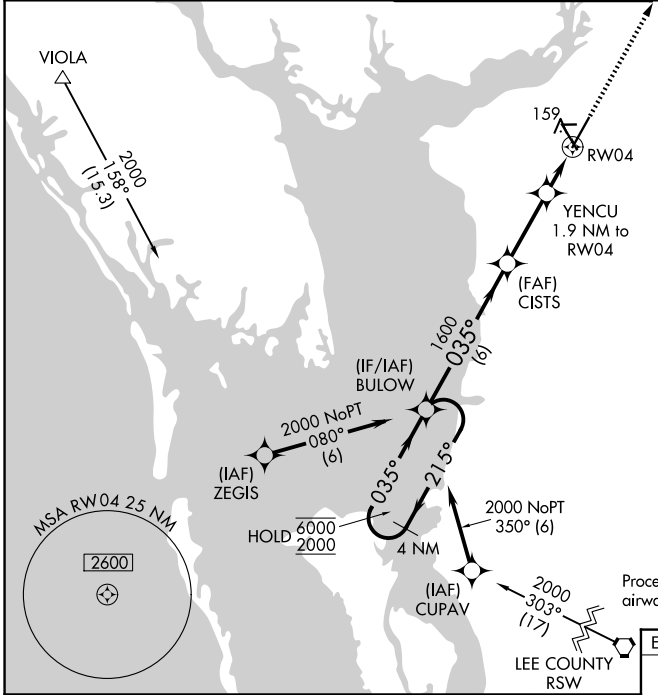
# RNAV (GPS) RWY 4

PUNTA GORDA (PGD)

RNP APCH - GPS.  
 For uncompensated Baro-VNAV systems, LNAV/VNAV NA below 3°C or above 54°C.

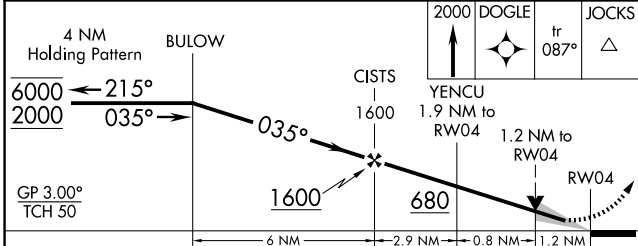
MISSED APPROACH: Climb to 2000 direct DOGLE and on track 087° to JOCKS and hold.

ATIS <b>135.675</b>	FORT MYERS APP CON★ <b>127.05 306.2</b>	PUNTA GORDA TOWER★ <b>121.0 (CTAF) 0</b>	GND CON <b>119.55</b>	UNICOM <b>122.975</b>
------------------------	--	---	--------------------------	--------------------------

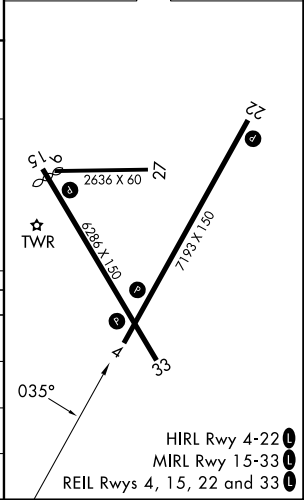


Procedure NA for arrival on RSW VORTAC airway radials 312 CW 016.

ELEV 26	TDZE 24
---------	---------



CATEGORY	A	B	C	D
LPV DA	256- <sup>3</sup> / <sub>4</sub>		232 (300- <sup>3</sup> / <sub>4</sub> )	
LNAV/VNAV DA	393-1		369 (400-1)	
LNAV MDA	440-1	416 (500-1)	440-1 <sup>1</sup> / <sub>8</sub>	416 (500-1 <sup>1</sup> / <sub>8</sub> )
CIRCLING	460-1 434 (500-1)	580-1 554 (600-1)	600-1 <sup>1</sup> / <sub>2</sub> 574 (600-1 <sup>1</sup> / <sub>2</sub> )	740-2 <sup>1</sup> / <sub>4</sub> 714 (800-2 <sup>1</sup> / <sub>4</sub> )



SE-3, 19 MAR 2026 to 16 APR 2026

SE-3, 19 MAR 2026 to 16 APR 2026