

VOR/DME JVL 114.3 Chan 90	APP CRS 118°	Rwy Ldg TDZE Apt Elev	N/A N/A 817
---	------------------------	-----------------------------	--

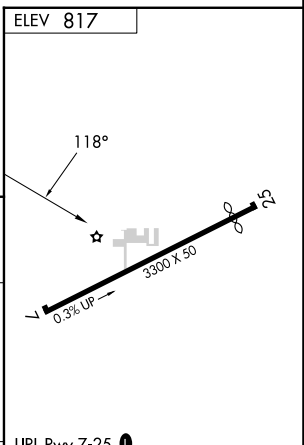
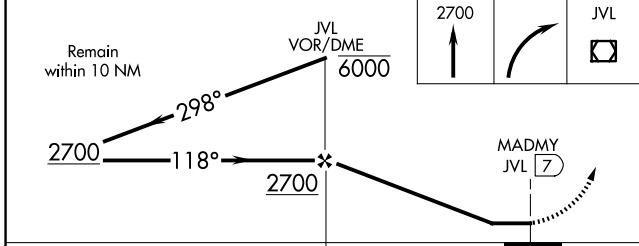
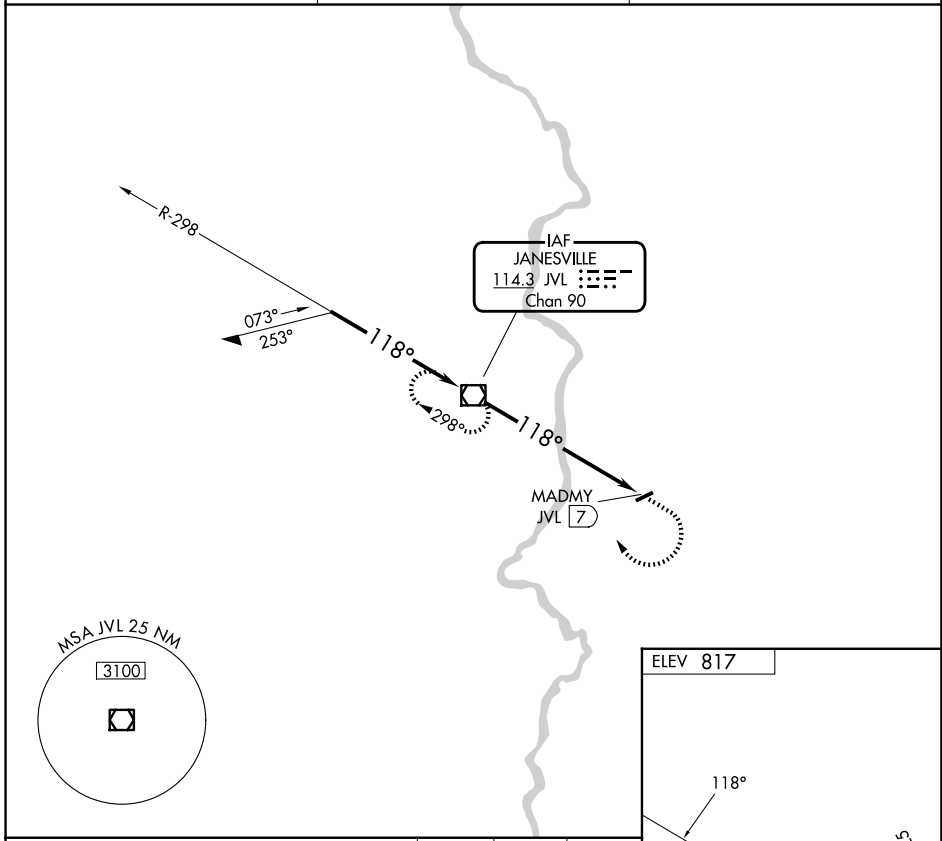
VOR-A

BELOIT (44C)

NA Procedure NA at night. Use JVL altimeter setting; when not received, use RFD altimeter setting and increase all MDAs 40 feet.

MISSED APPROACH: Climb to 2700 then right turn direct JVL VOR/DME and hold.

JVL AWOS-3 128.25	ROCKFORD APP CON 121.0 327.0	UNICOM 122.7 (CTAF) 0
-----------------------------	--	---------------------------------



CATEGORY	A	B	C	D	FAF to MAP 7 NM					
CIRCLING	1460-1 643 (700-1)	1540-1 723 (800-1)	NA		Knots	60	90	120	150	180
					Min:Sec	7:00	4:40	3:30	2:48	2:20

EC-3, 19 MAR 2026 to 16 APR 2026

EC-3, 19 MAR 2026 to 16 APR 2026