

WAAS CH <b>70527</b> <b>W18A</b>	APP CRS <b>182°</b>	Rwy Idg TDZE Apt Elev	<b>4000</b> <b>698</b> <b>698</b>
--	------------------------	-----------------------------	---

# RNAV (GPS) RWY 18

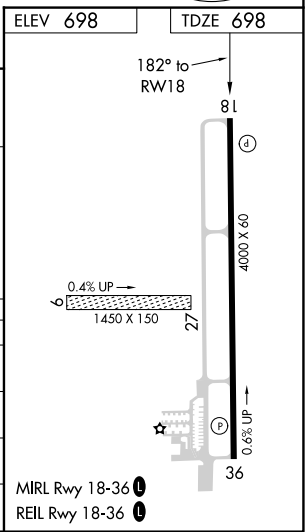
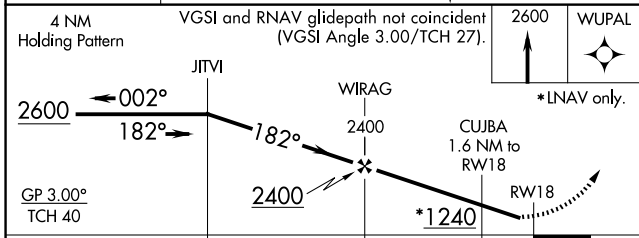
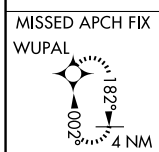
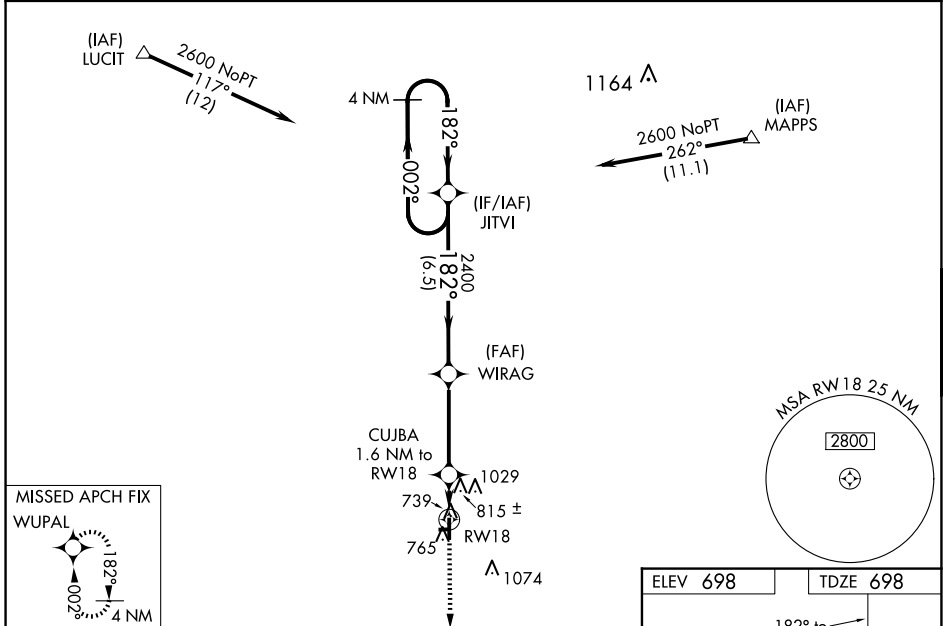
JASPER COUNTY (R.Z.L.)

RNP APCH.

**⚠** Baro-VNAV NA when using Knox altimeter setting. For uncompensated Baro-VNAV systems LNAV/VNAV NA below -22°C or above 54°C. When local altimeter setting not received, use Knox altimeter setting: increase LPV DA to 1026 feet and increase visibility all Cats ¼ SM; increase LNAV/VNAV DA to 1174 feet and visibility all Cats ½ SM; increase all MDAs 80 feet and LNAV visibility Cat C ½ SM, and Circling visibility Cat C ¼ SM. Rwy 18 helicopter visibility reduction below 1 SM NA. Circling NA to Rwy's 9 and 27.

**MISSED APPROACH:**  
Climb to 2600 direct WUPAL and hold.

AWOS-3P <b>119.175</b>	CHICAGO CENTER <b>132.5 284.7</b>	UNICOM <b>122.8 (CTAF) 0</b>
---------------------------	--------------------------------------	---------------------------------



CATEGORY	A	B	C	D
LPV DA	948-1 250 (300-1)			NA
LNAV/VNAV DA	1096-1 3/8 398 (400-1 3/8)			NA
LNAV MDA	1080-1	382 (400-1)	1080-1 1/8 382 (400-1 1/8)	NA
CIRCLING	1120-1 422 (500-1)	1380-1 682 (700-1)	1440-2 1/4 742 (800-2 1/4)	NA

EC-2, 19 MAR 2026 to 16 APR 2026

EC-2, 19 MAR 2026 to 16 APR 2026