

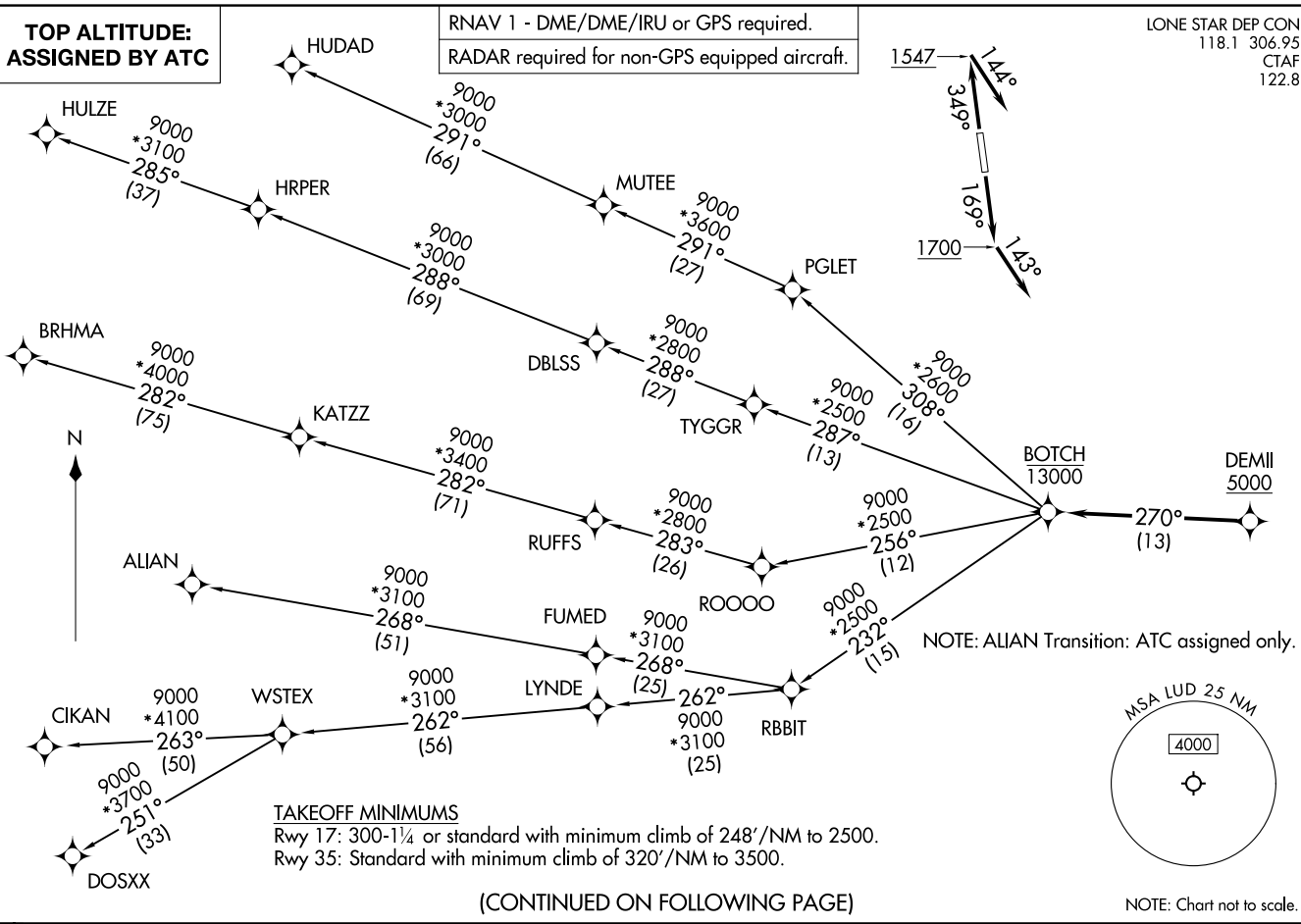
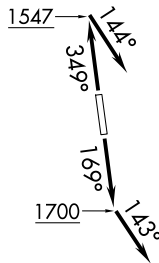
LONE STAR DEP CON
118.1 306.95
CTAF
122.8

RNAV 1 - DME/DME/IRU or GPS required.
RADAR required for non-GPS equipped aircraft.

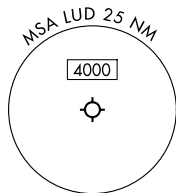
**TOP ALTITUDE:
ASSIGNED BY ATC**

(BOTCH) .BOTCH) 25107
BOTCH ONE DEPARTURE (RNAV)
AL-6190 (FAA)

DECATUR MUNI (LTD)
DECATUR, TEXAS



NOTE: ALIAN Transition: ATC assigned only.



TAKEOFF MINIMUMS
Rwy 17: 300-1¼ or standard with minimum climb of 248'/NM to 2500.
Rwy 35: Standard with minimum climb of 320'/NM to 3500.

(CONTINUED ON FOLLOWING PAGE)

BOTCH ONE DEPARTURE (RNAV)
(BOTCH) .BOTCH) 17ARPS

DECATUR, TEXAS
DECATUR MUNI (LTD)

BOTCH ONE DEPARTURE (RNAV)



DEPARTURE ROUTE DESCRIPTION

TAKEOFF RUNWAY 17: Climb on heading 169° to 1700, then on heading 143° or as assigned by ATC, for vectors to cross DEMIL at or above 5000, thence. . .

TAKEOFF RUNWAY 35: Climb on heading 349° to 1547, then on heading 144° or as assigned by ATC, for vectors to cross DEMIL at or above 5000, thence. . .

. . . on track 270° to cross BOTCH at or below 13000, then on (transition). Maintain ATC assigned altitude, expect filed altitude 10 minutes after departure.

ALIAN TRANSITION (BOTCH1.ALIAN)

BRHMA TRANSITION (BOTCH1.BRHMA)

CIKAN TRANSITION (BOTCH1.CIKAN)

DOSXX TRANSITION (BOTCH1.DOSXX)

HUDAD TRANSITION (BOTCH1.HUDAD)

HULZE TRANSITION (BOTCH1.HULZE)

WSTEX TRANSITION (BOTCH1.WSTEX)

SC-2, 19 MAR 2026 to 16 APR 2026

SC-2, 19 MAR 2026 to 16 APR 2026