

WAAS CH <b>42942</b> <b>W32A</b>	APP CRS <b>314°</b>	Rwy Ldg TDZE Apt Elev	<b>4600</b> <b>987</b> <b>987</b>
--	------------------------	-----------------------------	---

# RNAV (GPS) RWY 32

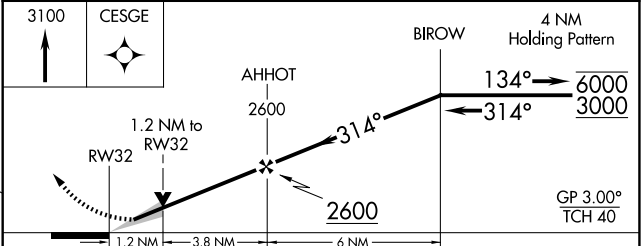
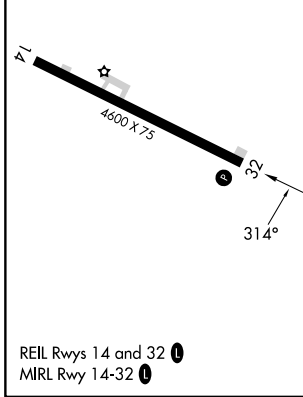
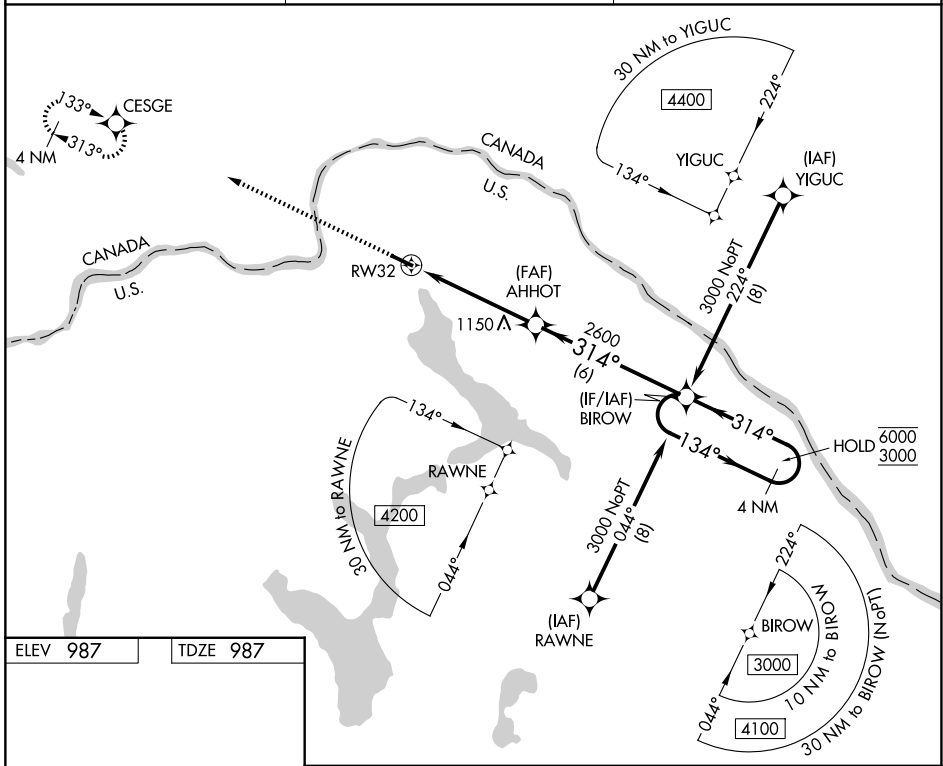
NORTHERN AROOSTOOK RGNL (FVE)

RNP APCH - GPS.

**⚠** VDP NA when using CAR altimeter setting. When local altimeter setting not received, use CAR altimeter setting and increase LPV to 1302, and all MDA 120 feet. Increase LNAV Cats C, D visibility  $\frac{3}{8}$  SM, and increase Circling Cat C visibility  $\frac{1}{2}$  SM and Cat D visibility  $\frac{1}{4}$  SM.

**MISSED APPROACH:**  
Climb to 3100 direct  
CESGE and hold.

ASOS <b>135.725</b>	BOSTON CENTER <b>124.75 239.05</b>	UNICOM <b>122.7 (CTAF) 0</b>
------------------------	---------------------------------------	---------------------------------



CATEGORY	A	B	C	D
LPV DA	1187-1		200 (200-1)	
LNAV MDA	1400-1	413 (500-1)	1400-1 $\frac{1}{8}$	413 (500-1 $\frac{1}{8}$ )
CIRCLING	1560-1 573 (600-1)	1580-1 593 (600-1)	1840-2 $\frac{1}{2}$ 853 (900-2 $\frac{1}{2}$ )	1840-2 $\frac{3}{4}$ 853 (900-2 $\frac{3}{4}$ )

NE-1, 19 MAR 2026 to 16 APR 2026

NE-1, 19 MAR 2026 to 16 APR 2026