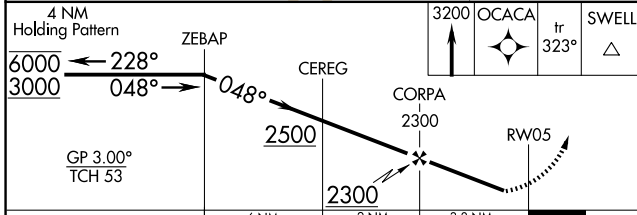
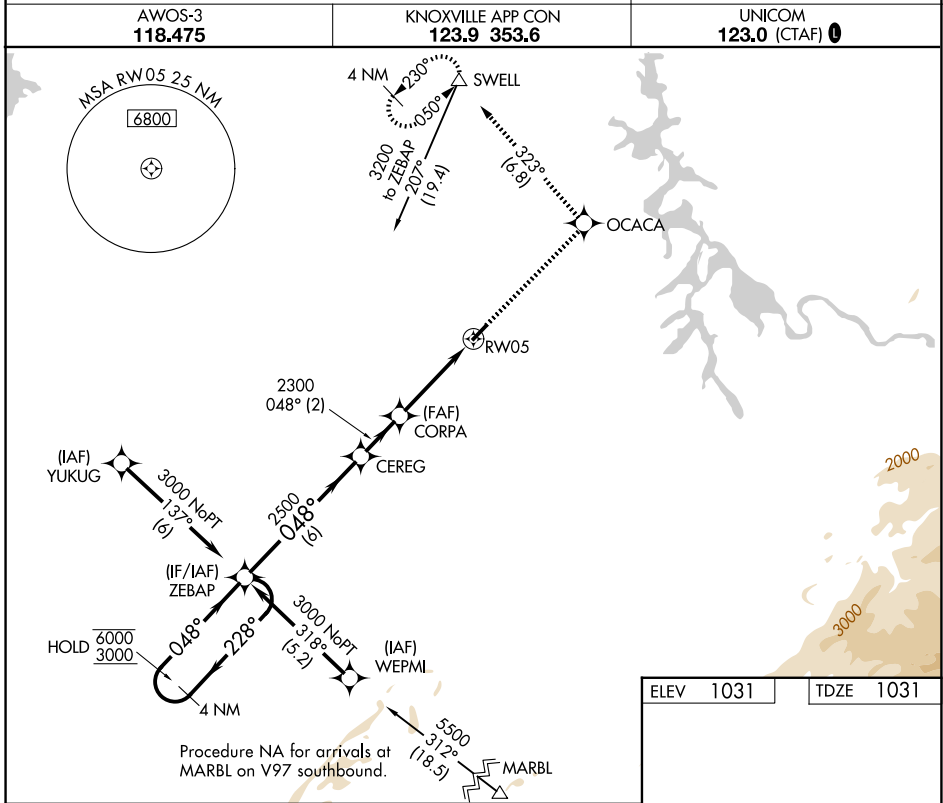


WAAS CH 99531	APP CRS 048°	Rwy Ldg TDZE Apt Elev	3643 1031 1031
W05A			

RNAV (GPS) RWY 5

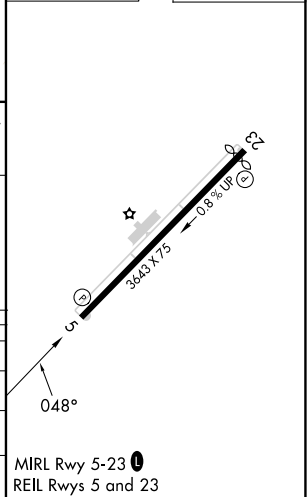
MONROE COUNTY (MNV)

RNP APCH - GPS.	MISSED APPROACH: Climb to 3200 direct OCACA and on track 323° to SWELL and hold.
AWOS-3 118.475	KNOXVILLE APP CON 123.9 353.6
	UNICOM 123.0 (CTAF) 0



ELEV 1031	TDZE 1031
-----------	-----------

CATEGORY	A	B	C	D
LPV DA	1395-1	364 (400-1)		NA
LNNAV/VNAV DA	1538-1 $\frac{3}{8}$	507 (600-1 $\frac{3}{8}$)		NA
LNNAV MDA	1680-1	649 (700-1)	1680-1 $\frac{1}{8}$ 649 (700-1 $\frac{1}{8}$)	NA
CIRCLING	1680-1	649 (700-1)	1680-1 $\frac{1}{8}$ 649 (700-1 $\frac{1}{8}$)	NA



SE-1, 19 MAR 2026 to 16 APR 2026

SE-1, 19 MAR 2026 to 16 APR 2026