

WAAS CH <b>65616</b> <b>W35A</b>	APP CRS <b>354°</b>	Rwy Ldg TDZE Apt Elev	<b>6000</b> <b>3064</b> <b>3071</b>
--	------------------------	-----------------------------	---

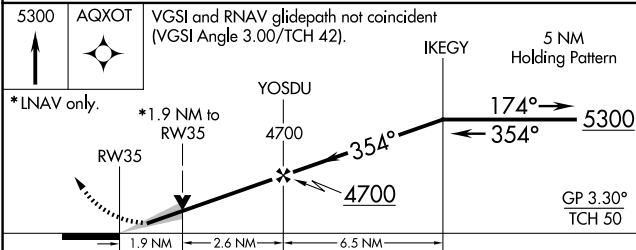
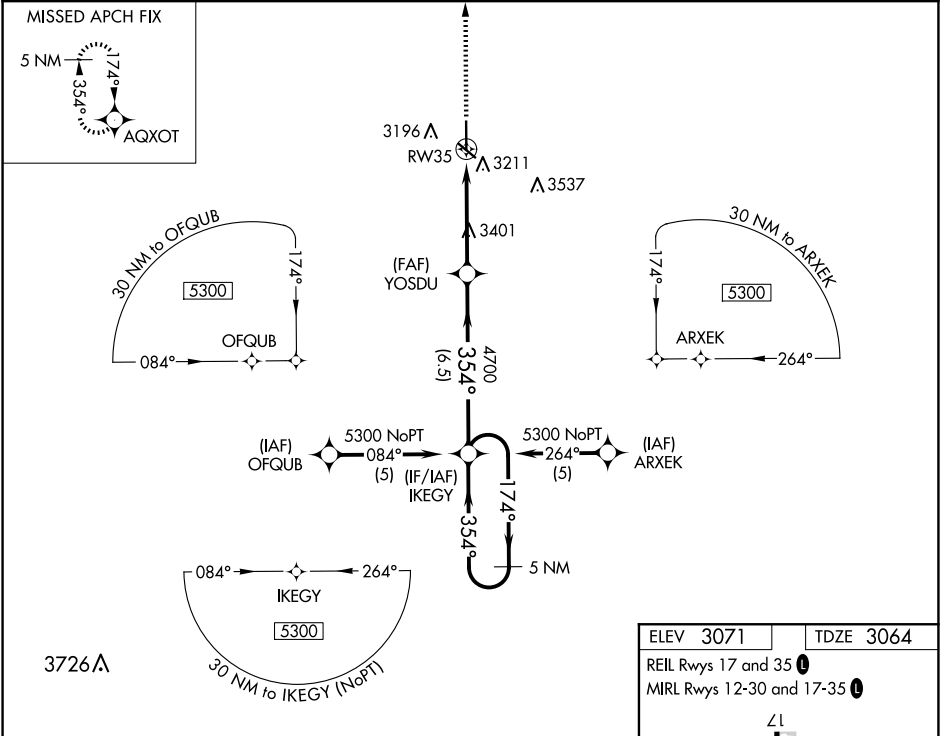
# RNAV (GPS) RWY 35

ULYSSES (ULS)

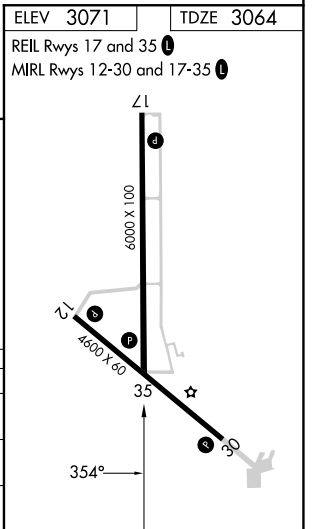
**▼** DME/DME RNP-0.3 NA. When local altimeter setting not received, use Garden City altimeter setting and increase LPV DA to 3485 and visibility 3/8 mile all Cats, and all MDA 120 feet; increase visibility LNAV Cats B/C and Circling Cats B/C 1/4 mile. VDP NA with Garden City altimeter setting.

**▲ NA** MISSED APPROACH: Climb to 5300 direct AQXOT and hold.

AWOS-3PT <b>118.95</b>	KANSAS CITY CENTER <b>125.2 285.425</b>	UNICOM <b>122.8 (CTAF)</b>
---------------------------	--	-------------------------------



CATEGORY	A	B	C	D
LPV DA	3375-1 311 (400-1)			NA
LNAV MDA	3700-1	636 (700-1)	3700-1 <sup>3</sup> / <sub>4</sub> 636 (700-1 <sup>3</sup> / <sub>4</sub> )	NA
<b>C</b> CIRCLING	3740-1	669 (700-1)	3900-2 <sup>1</sup> / <sub>2</sub> 829 (900-2 <sup>1</sup> / <sub>2</sub> )	NA



NC-2, 19 MAR 2026 to 16 APR 2026

NC-2, 19 MAR 2026 to 16 APR 2026