

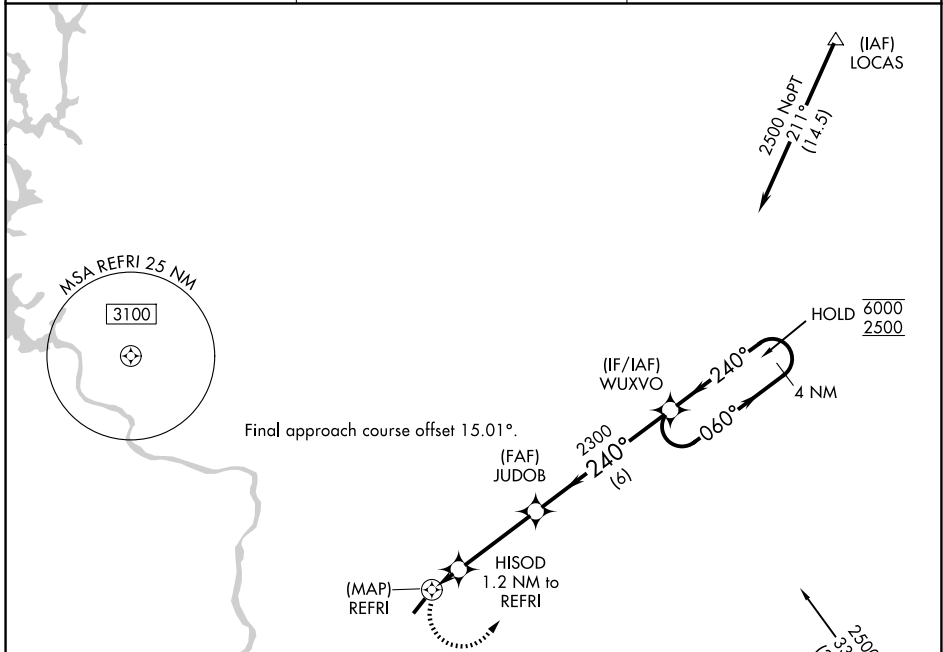
APP CRS	Rwy Ldg	<b>3109</b>
<b>240°</b>	TDZE	<b>602</b>
	Apt Elev	<b>602</b>

# RNAV (GPS) RWY 22

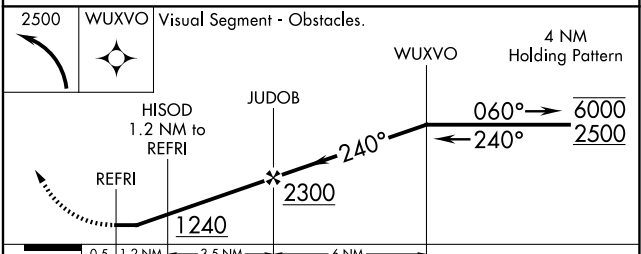
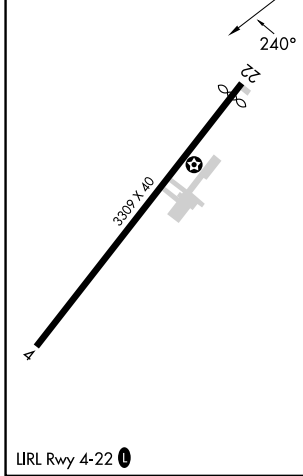
JAARS-TOWNSEND (N52)

RNP APCH - GPS.		MISSED APPROACH: Climbing left turn to 2500 direct WUXVO and hold.
Procedure NA at night. Rwy 22 helicopter visibility reduction below 1 SM NA. Use EQY altimeter setting; when not received, use UZA altimeter setting and increase all MDAs 20 feet.		

EQY ASOS <b>135.775</b>	CHARLOTTE APP CON <b>120.05 307.8</b>	UNICOM <b>123.0 (CTAF) 0</b>
----------------------------	--	---------------------------------



ELEV	<b>602</b>	TDZE	<b>602</b>
------	------------	------	------------



CATEGORY	A	B	C	D
LNAV MDA	1080-1	478 (500-1)	NA	
CIRCLING	1160-1 558 (600-1)	1220-1 618 (700-1)	NA	

SE-2, 19 MAR 2026 to 16 APR 2026

SE-2, 19 MAR 2026 to 16 APR 2026