

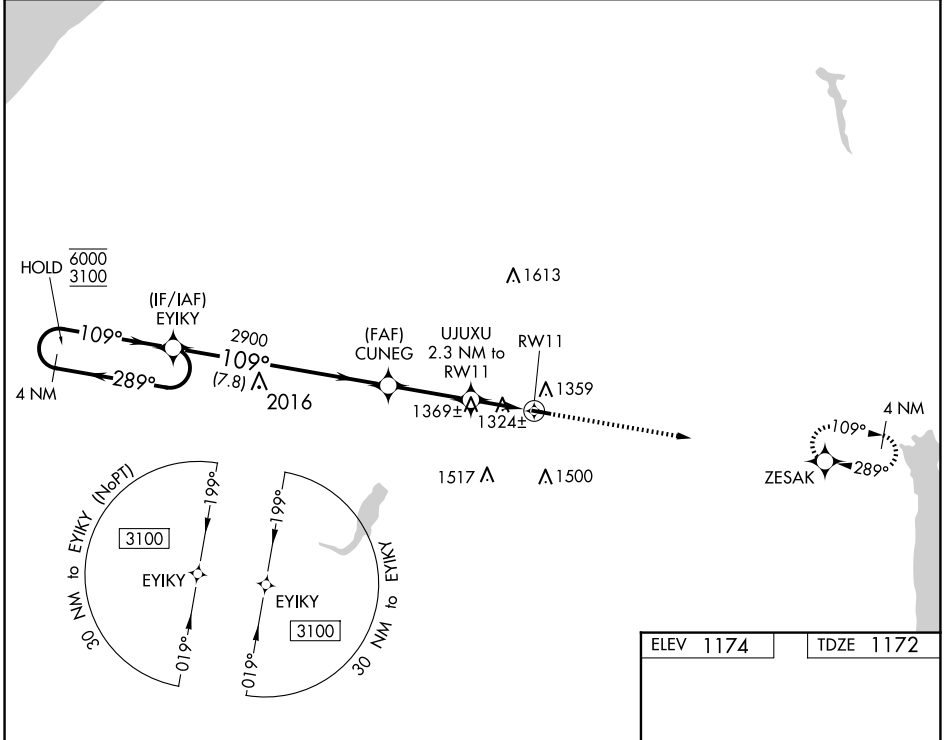
WAAS CH <b>97633</b> <b>W11A</b>	APP CRS <b>109°</b>	Rwy Idg TDZE Apt Elev	<b>3321</b> <b>1172</b> <b>1174</b>
--	------------------------	-----------------------------	---

# RNAV (GPS) RWY 11

GEAUGA COUNTY (7G8)

RNP APCH - GPS.		MISSED APPROACH: Climb to 4000 direct ZESAK and hold, continue climb-in-hold 4000.
<p><b>▽</b> Rwy 11 helicopter visibility reduction below 1 SM NA. Use Youngstown/Warren altimeter setting; when not received, use Cuyahoga County altimeter setting and increase all MDAs 40 feet and increase LNAV Cat C and Circling Cat C visibilities ¼ SM. Straight-in Rwy 11 NA at night. Circling Rwy 11 NA at night.</p>		

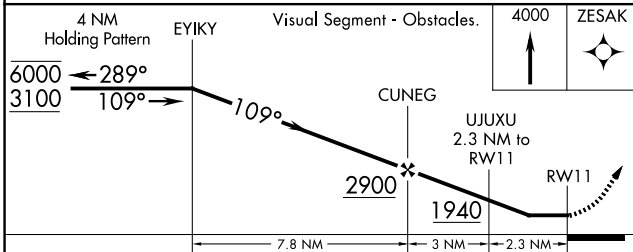
YNG ASOS <b>123.75</b>	CLEVELAND APP CON <b>125.35 346.325</b>	UNICOM <b>123.0 (CTAF) 0</b>
---------------------------	--	---------------------------------



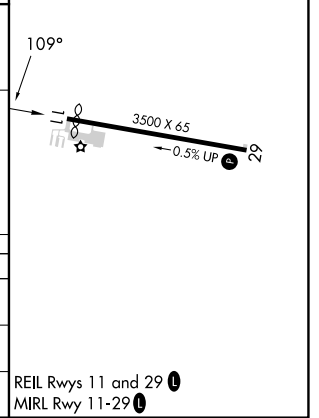
EC-2, 19 MAR 2026 to 16 APR 2026

EC-2, 19 MAR 2026 to 16 APR 2026

ELEV 1174	TDZE 1172
-----------	-----------



CATEGORY	A	B	C	D
LP MDA	1640-1	468 (500-1)	1640-1½ 468 (500-1½)	NA
LNAV MDA	1680-1	508 (600-1)	1680-1½ 508 (600-1½)	NA
<b>C</b> CIRCLING	1760-1	586 (600-1)	1900-2 726 (800-2)	NA



REIL Rwys 11 and 29 **0**  
MIRL Rwy 11-29 **0**