

WAAS CH <b>61233</b> <b>W29A</b>	APP CRS <b>289°</b>	Rwy Idg TDZE <b>1167</b> Apt Elev <b>1174</b>	<b>3500</b> <b>1167</b> <b>1174</b>
--	------------------------	---	---

# RNAV (GPS) RWY 29

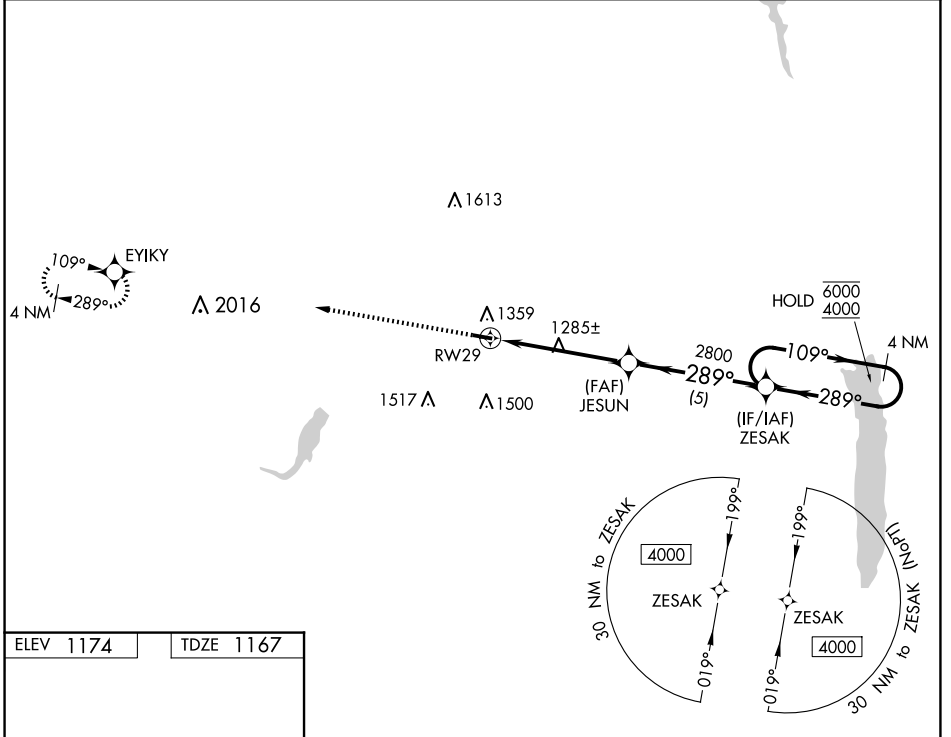
GEAUGA COUNTY (7G8)

RNP APCH - GPS.

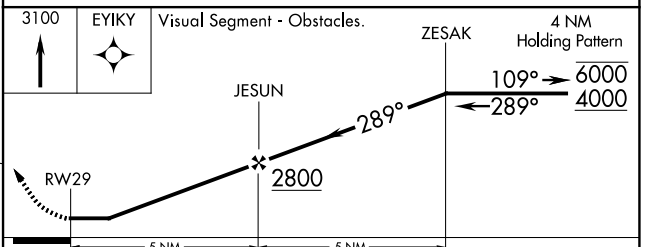
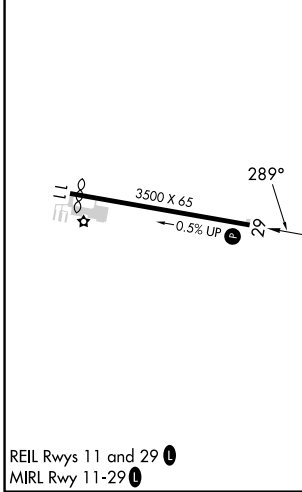
**NA** Circling Rwy 11 NA at night. Rwy 29 helicopter visibility reduction below 3/4 SM NA. Use Youngstown/Warren altimeter setting; when not received, use Cuyahoga County altimeter setting and increase all MDA's 40 feet and increase Circling Cat C visibility 1/4 SM.

MISSED APPROACH: Climb to 3100 direct EYIKY and hold.

YNG ASOS <b>123.75</b>	CLEVELAND APP CON <b>125.35 346.325</b>	UNICOM <b>123.0 (CTAF) 1</b>
---------------------------	--	---------------------------------



ELEV <b>1174</b>	TDZE <b>1167</b>
------------------	------------------



CATEGORY	A	B	C	D
LP MDA	1620-1	453 (500-1)	1620-1 3/8 453 (500-1 3/8)	NA
LNAV MDA	1640-1	473 (500-1)	1640-1 3/8 473 (500-1 3/8)	NA
<b>C</b> CIRCLING	1760-1	586 (600-1)	1900-2 726 (800-2)	NA

REIL Rwy 11 and 29 **1**  
MIRL Rwy 11-29 **1**

EC-2, 19 MAR 2026 to 16 APR 2026

EC-2, 19 MAR 2026 to 16 APR 2026