

VORTAC OKW 111.0 Chan 47	APP CRS 076°	Rwy Ldg TDZE Apt Elev 6007 700 700
---------------------------------------	------------------------	--

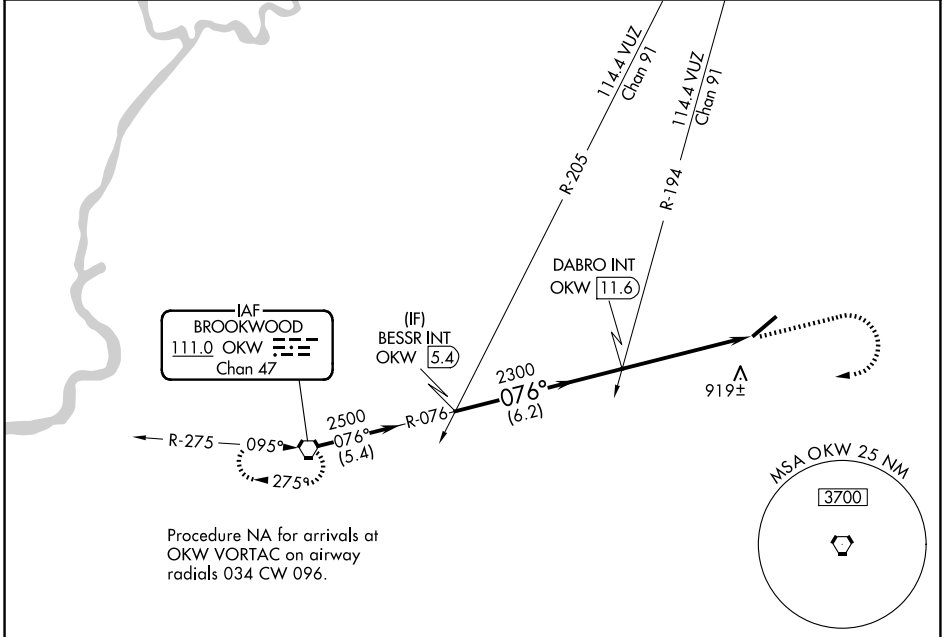
VOR RWY 5

BESSEMER NTL (E.K.Y)

NA Inoperative table does not apply. When local altimeter setting not received, use Alabaster altimeter setting and increase all MDAs 60 feet; increase S-5 Cat C visibility $\frac{1}{8}$ SM and Circling Cat D visibility $\frac{1}{4}$ SM.

MISSED APPROACH: Climb to 1500 then climbing right turn to 3000 direct OKW VORTAC and hold.

AWOS-3PT 118.825	BIRMINGHAM APP CON 124.9 351.85	CLNC DEL 123.75	UNICOM 123.0 (CTAF)
----------------------------	---	---------------------------	-------------------------------



Procedure NA for arrivals at OKW VORTAC on airway radials 034 CW 096.

SE-4, 19 MAR 2026 to 16 APR 2026

SE-4, 19 MAR 2026 to 16 APR 2026

ELEV 700		TDZE 700																					
Procedure Turn NA	BESSR INT OKW (5.4)	DABRO INT OKW (11.6)	OKW (16.4)																				
VGSI and descent angles not coincident (VGSI Angle 3.00/TCH 60).																							
6.2 NM		4.9 NM																					
CATEGORY	A	B	C																				
S-5	1180-1 480 (500-1)	1180-1 $\frac{3}{8}$ 480 (500-1 $\frac{3}{8}$)	1180-1 $\frac{1}{2}$ 480 (500-1 $\frac{1}{2}$)																				
CIRCLING	1200-1 500 (500-1)	1220-1 $\frac{1}{2}$ 520 (600-1 $\frac{1}{2}$)	1320-2 620 (700-2)																				
<table border="1"> <tr> <td colspan="2">HIRL Rwy 5-23</td> <td colspan="2">REIL Rwy 5 and 23</td> </tr> <tr> <td colspan="4">FAF to MAP 4.9 NM</td> </tr> <tr> <td>Knots</td> <td>60</td> <td>90</td> <td>120</td> </tr> <tr> <td>Min:Sec</td> <td>4:54</td> <td>3:16</td> <td>2:27</td> </tr> <tr> <td></td> <td>1:58</td> <td>1:38</td> <td></td> </tr> </table>				HIRL Rwy 5-23		REIL Rwy 5 and 23		FAF to MAP 4.9 NM				Knots	60	90	120	Min:Sec	4:54	3:16	2:27		1:58	1:38	
HIRL Rwy 5-23		REIL Rwy 5 and 23																					
FAF to MAP 4.9 NM																							
Knots	60	90	120																				
Min:Sec	4:54	3:16	2:27																				
	1:58	1:38																					