

# ODKAE ONE DEPARTURE (OBSTACLE)

ALBUQUERQUE CENTER  
135.875 292.15  
CTAF  
122.8

### TAKEOFF MINIMUMS

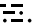
Rwy 23: NA - Obstacle.

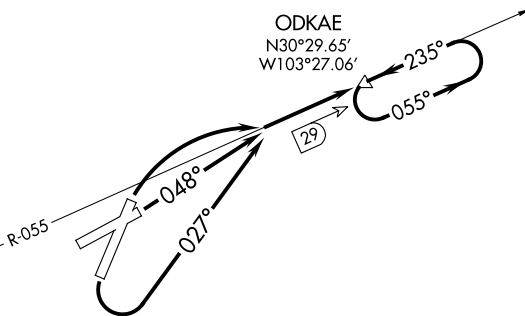
Rwys 1, 5: Standard.

Rwy 19: Standard with minimum climb of 432' per  
NM to 6800 or 1800-3 for VCOA.



R-6318

MARFA  
115.9 MRF   
Chan 106



NOTE: DME required.

(NOTES CONTINUED ON FOLLOWING PAGE)

NOTE: Chart not to scale.

## DEPARTURE ROUTE DESCRIPTION

TAKEOFF RUNWAY 1: Climbing right turn to intercept MRF VOR/DME R-055 to ODKAE/29 DME, thence...

TAKEOFF RUNWAY 5: Climb on heading 048° to intercept MRF VOR/DME R-055 to ODKAE/29 DME, thence...

TAKEOFF RUNWAY 19: Climbing left turn on heading 027° to intercept MRF VOR/DME R-055 to ODKAE/29 DME, thence...

...continue climb in ODKAE holding pattern to 8600 before proceeding on course.

VCOA RUNWAY 19: Obtain ATC approval for VCOA when requesting IFR clearance. Climb in visual conditions to cross Alpine-Casparis Muni airport at or above 6200 on heading 027° and on MRF VOR/DME R-055 to ODKAE/29 DME, do not exceed 210K until established on MRF R -055 to ODKAE. Continue climb in ODKAE holding pattern to 8600 before proceeding on course.

ODKAE ONE DEPARTURE (OBSTACLE)

TAKEOFF OBSTACLE NOTES

- Rwy 1: Fence 9' from DER, 283' left of centerline, 9' AGL/4458' MSL.  
 Sign 13' from DER, 239' right of centerline, 4452' MSL.  
 Vehicle on road 85' from DER, 278' left of centerline, 15' AGL/4463' MSL.  
 Pole 811' from DER, 470' right of centerline, 4470' MSL.
- Rwy 5: Sign 13' from DER, 239' left of centerline, 4452' MSL.  
 Sign 18' from DER, 164' right of centerline, 4453' MSL.  
 Antenna, vehicle on road, pole beginning 21' from DER, 400' right of centerline, up to 25' AGL/4474' MSL.  
 Tree 190' from DER, 468' left of centerline, 11' AGL/4455' MSL.  
 Trees beginning 292' from DER, 475' left of centerline, up to 19' AGL/4462' MSL.  
 Poles, tree beginning 480' from DER, 187' right of centerline, up to 4478' MSL.  
 Pole 612' from DER, 626' left of centerline, 33' AGL/4472' MSL.  
 Pole 1060' from DER, 658' left of centerline, 4476' MSL.
- Rwy 19: Vehicle on road, sign, tree beginning 1' from DER, 165' left of centerline, up to 4526' MSL.  
 Terrain 57' from DER, 121' right of centerline, 4516' MSL.  
 Vehicle on road 74' from DER, 276' right of centerline, 15' AGL/4531' MSL.  
 Vehicle on road 230' from DER, 290' left of centerline, 4527' MSL.  
 Vehicles on road beginning 293' from DER, 277' right of centerline, up to 4535' MSL.  
 Vehicles on road beginning 379' from DER, 265' right of centerline, up to 4536' MSL.  
 Vehicle on road 420' from DER, 289' left of centerline, 4528' MSL.  
 Pole 536' from DER, 573' left of centerline, 4548' MSL.  
 Windmill, vehicle on road, poles, tree beginning 548' from DER, 183' left of centerline, up to 4554' MSL.  
 Poles beginning 1325' from DER, 60' right of centerline, up to 4561' MSL.  
 Poles beginning 1334' from DER, 279' left of centerline, up to 4556' MSL.  
 Pole 1565' from DER, 689' right of centerline, 4562' MSL.  
 Terrain 2.4 NM from DER, 2888' left of centerline, 4927' MSL.

SC-3, 19 MAR 2026 to 16 APR 2026

SC-3, 19 MAR 2026 to 16 APR 2026