

WAAS CH <b>90216</b> <b>W27A</b>	APP CRS <b>274°</b>	Rwy Idg <b>5390</b> TDZE <b>552</b> Apt Elev <b>569</b>
--	------------------------	---

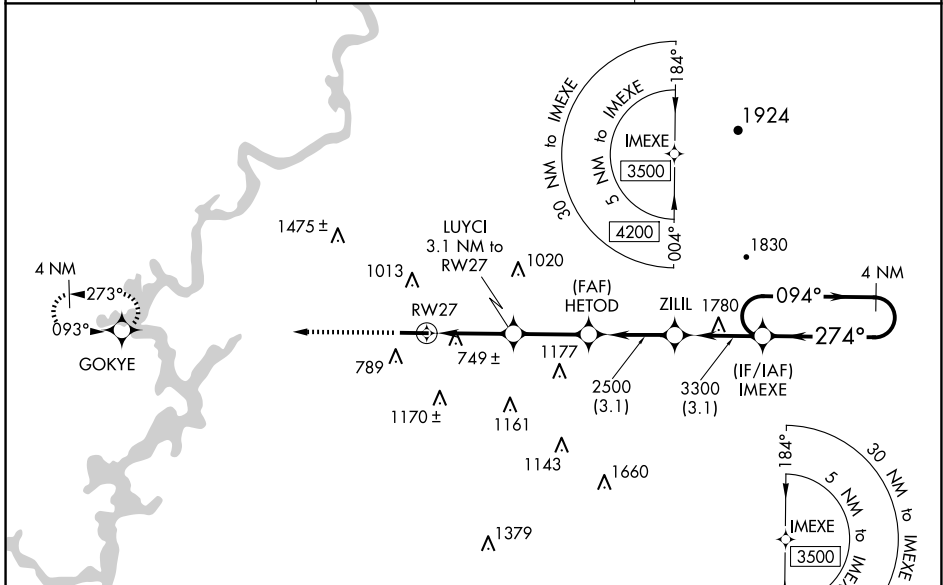
# RNAV (GPS) RWY 27

MERKEL FLD SYLACAUGA MUNI (SCD)

⚠ For uncompensated Baro-VNAV systems, LNAV/VNAV NA below -16°C (4°F) or above 48°C (118°F). Baro-VNAV and VDP NA when using Birmingham altimeter setting.  
 ⚠ DME/DME RNP-0.3 NA. When local altimeter setting not received, use Birmingham altimeter setting and increase LPV DA to 889 feet, LNAV/VNAV DA to 1161 feet, and all visibilities 3/8 mile. Increase all MDA 100 feet and LNAV Cat C and D visibilities 1/4 mile.

MISSED APPROACH:  
Climb to 3200 direct GOKYE and hold.

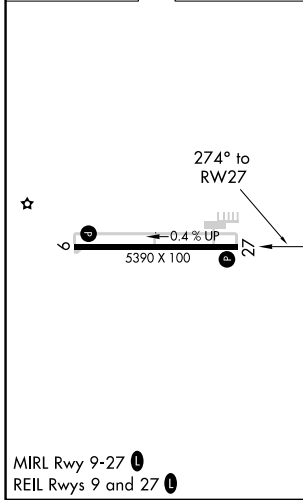
AWOS-3PT <b>119.125</b>	BIRMINGHAM APP CON <b>123.8 256.8</b>	UNICOM <b>122.8 (CTAF) 0</b>
----------------------------	--	---------------------------------



SE-4, 19 MAR 2026 to 16 APR 2026

SE-4, 19 MAR 2026 to 16 APR 2026

ELEV 569	TDZE 552
----------	----------



3200	GOKYE	VGSI and RNAV glidepath not coincident (VGSI Angle 3.00/TCH 40).	4 NM Holding Pattern
*LNAV only.		LUYCI 3.1 NM to RW27	HETOD 2500
*1.3 NM to RW27		ZILIL 3300	IMEXE 3500
*1600		GP 3.10° TCH 48	

CATEGORY	A	B	C	D
LPV DA	802-3/4	250 (300-3/4)		
LNAV/VNAV DA	1074-13/4	522 (600-13/4)		
LNAV MDA	1000-1 448 (500-1)	1000-13/8 448 (500-13/8)		
<input checked="" type="checkbox"/> CIRCLING	1140-1 571 (600-1)	1400-11/4 831 (900-11/4)	1620-3 1051 (1100-3)	1700-3 1131 (1200-3)

SYLACAUGA, ALABAMA  
Amdt 2 15SEP16

33°10'N-86°18'W

MERKEL FLD SYLACAUGA MUNI (SCD)  
**RNAV (GPS) RWY 27**