

CAMP MACKALL, NORTH CAROLINA

# RNAV (GPS) RWY 30

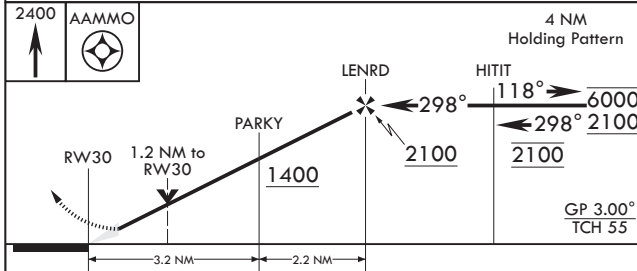
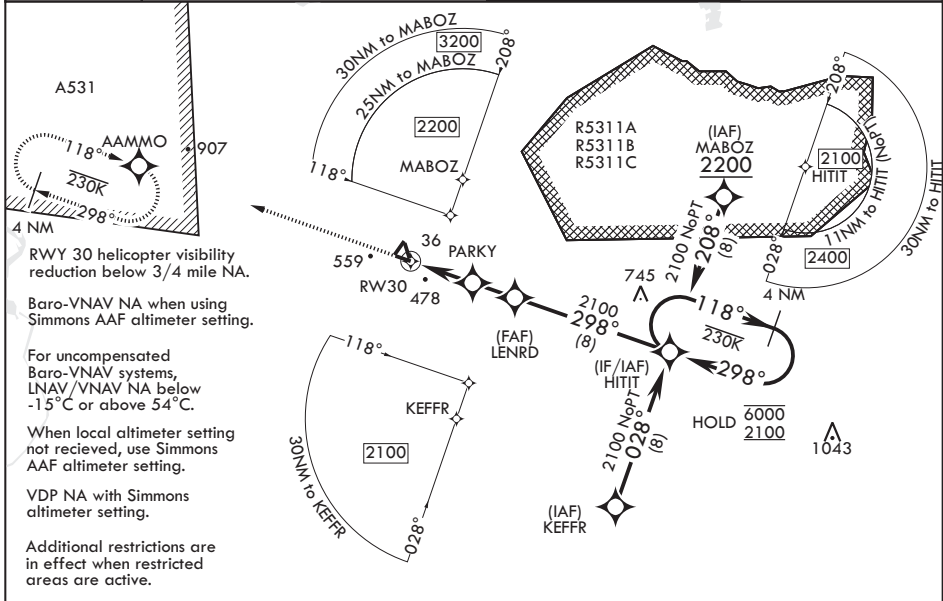
WAAS CH 51219 W30A	APCH CRS 298°	Rwy ldg TDZE Arpt Elev	4794 352 376
--------------------------	------------------	---------------------------	--------------------

(USA)

MACKALL AAF (KHFF)

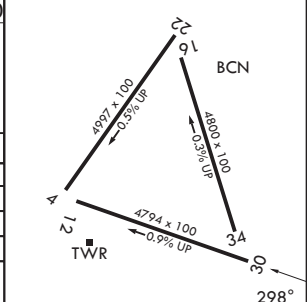
RNP APCH - GPS	MISSED APPROACH: Climb to 2400 direct AAMMO and hold.
RADAR required when special use space active.	
* When tower closed, increase vis to 1 mile. ** Circling NA to RWYs 4, 16, 22, and 34.	

D-ATIS 141.4	FAYETTEVILLE APP CON/DEP CON 127.8 343.725	TOWER* 121.0 (CTAF) 254.4	GND CON 128.35 251.05
-----------------	---	------------------------------	--------------------------



ELEV 376	TDZE 352
----------	----------

CATEGORY	A	B	C	D
LPV DA*	602-3/4	250	(300-3/4)	
LNAV/VNAV DA	793-13/8	441	(500-13/8)	
LNAV MDA	760-1 408 (400-1)	760-13/8 408 (400-13/8)		
CIRCLING**	860-1 484 (500-1)	880-1 504 (600-1)	980-13/4 604 (700-13/4)	1040-2 664 (700-2)
SIMMONS AAF ALTIMETER SETTING MINIMUMS				
LPV DA	686-1	334	(400-1)	
LNAV/VNAV DA	860-13/8	508	(500-13/8)	
LNAV MDA	860-1 508 (500-1)	860-13/8 508 (500-13/8)		
CIRCLING**	960-1 584 (600-1)	980-1 604 (700-1)	1080-2 704 (800-2)	1140-2 764 (800-2)



MIRL Rwy 12-30

CAMP MACKALL, NORTH CAROLINA  
Amdt 1 07SEP23

35°02'N - 79°30'W

MACKALL AAF (KHFF)

# RNAV (GPS) RWY 30

SE-2, 19 MAR 2026 to 16 APR 2026

SE-2, 19 MAR 2026 to 16 APR 2026