

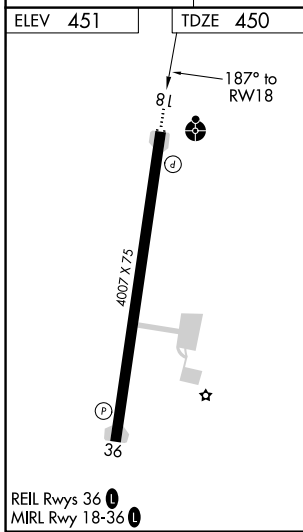
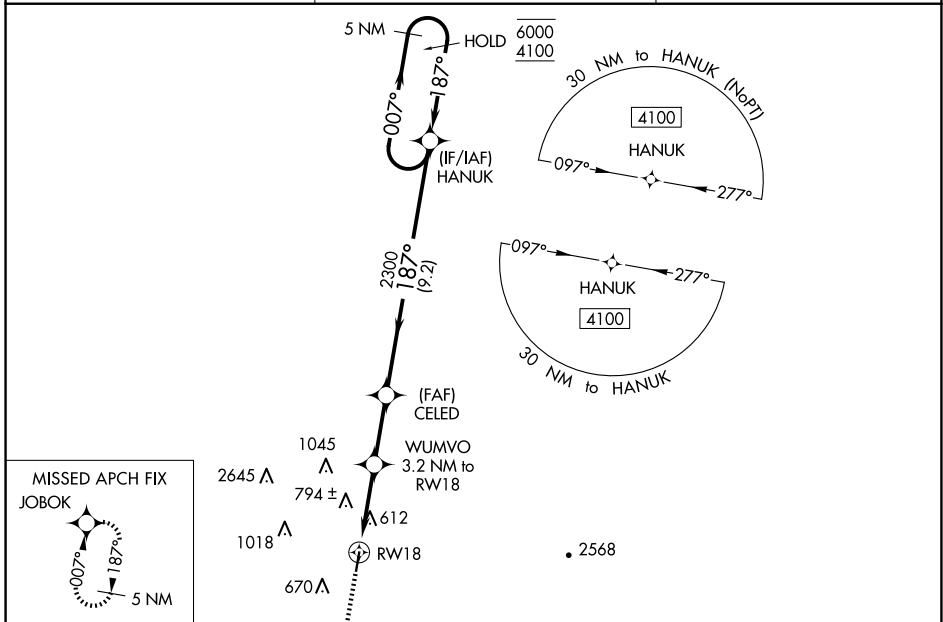
WAAS CH 56443 W18A	APP CRS 187°	Rwy Idg TDZE 4007 450 Apt Elev 451
--	------------------------	--

RNAV (GPS) RWY 18

ROBERT S KERR (RKR)

RNP APCH. ⚠ Rwy 18 helicopter visibility reduction below 3/4 SM NA. For uncompensated Baro-VNAV systems, LNAV/VNAV NA below -15°C or above 54°C. ⚠ Circling NA for Cats C and D west of Rwy 18-36.	ODALS 	MISSED APPROACH: Climb to 4100 direct JOBOK and hold, continue climb-in-hold to 4100.
--	-----------	---

AWOS-3 120.625	RAZORBACK APP CON * 120.9 343.75	UNICOM 122.8 (CTAF)
--------------------------	--	-------------------------------



ELEV 451	TDZE 450	2890 Δ • 2403 4100 Δ • 2403 WUMVO 3.2 NM to RWY 18 CELED 2300 HANUK 5 NM Holding Pattern * LNAV only * 1.4 NM to RWY 18 RWY 18 1500* 2300 187° → 6000 ← 187° 4100 GP 3.00° TCH 40																											
REIL Rwy 36 MIRL Rwy 18-36	<table border="1"> <thead> <tr> <th>CATEGORY</th> <th>A</th> <th>B</th> <th>C</th> <th>D</th> </tr> </thead> <tbody> <tr> <td>LPV DA</td> <td></td> <td>700-1</td> <td>250 (300-1)</td> <td></td> </tr> <tr> <td>LNAV/VNAV DA</td> <td></td> <td>926-1 3/8</td> <td>476 (500-1 3/8)</td> <td></td> </tr> <tr> <td>LNAV MDA</td> <td>940-1</td> <td>490 (500-1)</td> <td>940-1 3/8</td> <td>490 (500-1 3/8)</td> </tr> <tr> <td> CIRCLING</td> <td>1000-1 549 (600-1)</td> <td>1100-1 649 (700-1)</td> <td>1100-1 3/4 649 (700-1 3/4)</td> <td>1160-2 1/4 709 (800-2 1/4)</td> </tr> </tbody> </table>				CATEGORY	A	B	C	D	LPV DA		700-1	250 (300-1)		LNAV/VNAV DA		926-1 3/8	476 (500-1 3/8)		LNAV MDA	940-1	490 (500-1)	940-1 3/8	490 (500-1 3/8)	CIRCLING	1000-1 549 (600-1)	1100-1 649 (700-1)	1100-1 3/4 649 (700-1 3/4)	1160-2 1/4 709 (800-2 1/4)
CATEGORY	A	B	C	D																									
LPV DA		700-1	250 (300-1)																										
LNAV/VNAV DA		926-1 3/8	476 (500-1 3/8)																										
LNAV MDA	940-1	490 (500-1)	940-1 3/8	490 (500-1 3/8)																									
CIRCLING	1000-1 549 (600-1)	1100-1 649 (700-1)	1100-1 3/4 649 (700-1 3/4)	1160-2 1/4 709 (800-2 1/4)																									

SC-1, 19 MAR 2026 to 16 APR 2026

SC-1, 19 MAR 2026 to 16 APR 2026