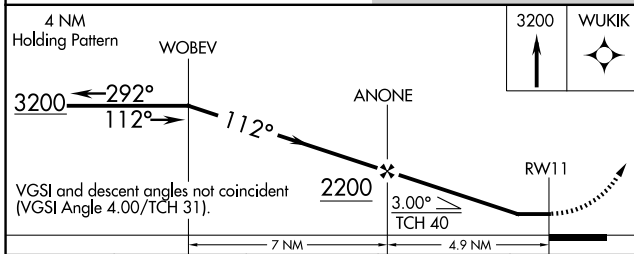
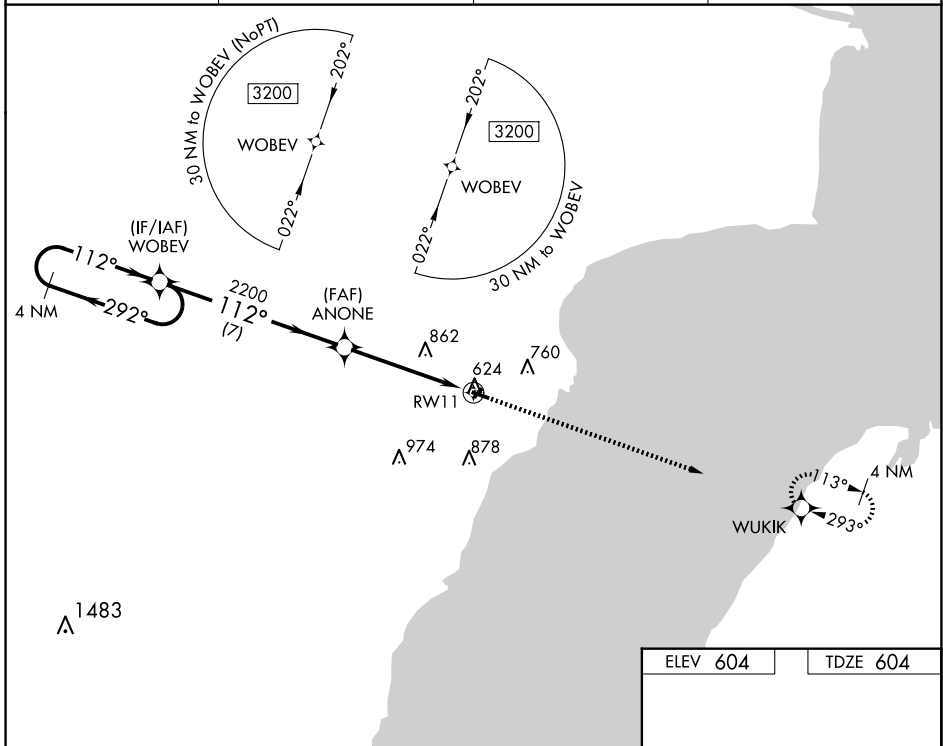


WAAS CH 99629 W11A	APP CRS 112°	Rwy Idg 3199 TDZE 604 Apt Elev 604
--	------------------------	---

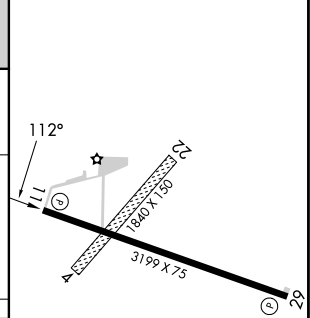
RNAV (GPS) RWY 11

OCONTO/J DOUGLAS BAKE MUNI (OCQ)

RNP APCH - GPS.			MISSED APPROACH: Climb to 3200 direct WUKIK and hold.
<p>▼ When local altimeter setting not received, use Menominee, MI altimeter setting. Procedure NA at night. Rwy 11 helicopter visibility reduction below 3/4 SM NA. Circling NA to Rws 4 and 22.</p>			
AWOS-3 120.925	MNM AWOS-3PT 121.45	GREEN BAY APP CON ★ 120.3 338.2	UNICOM 122.8 (CTAF) ①



ELEV 604	TDZE 604
----------	----------



CATEGORY	A	B	C	D
LP MDA	1200-1	596 (600-1)	1200-1 3/4 596 (600-1 3/4)	NA
LNAV MDA	1220-1	616 (700-1)	1220-1 3/4 616 (700-1 3/4)	NA
CIRCLING	1220-1	616 (700-1)	1260-1 3/4 656 (700-1 3/4)	NA

REIL Rws 11 and 29 **①**
MIRL Rwy 11-29 **①**

EC-3, 19 MAR 2026 to 16 APR 2026

EC-3, 19 MAR 2026 to 16 APR 2026