

WAAS CH 99627 W24A	APP CRS 239°	Rwy Ldg TDZE Apt Elev	4600 425 428
--	------------------------	-----------------------------	---

RNAV (GPS) RWY 24

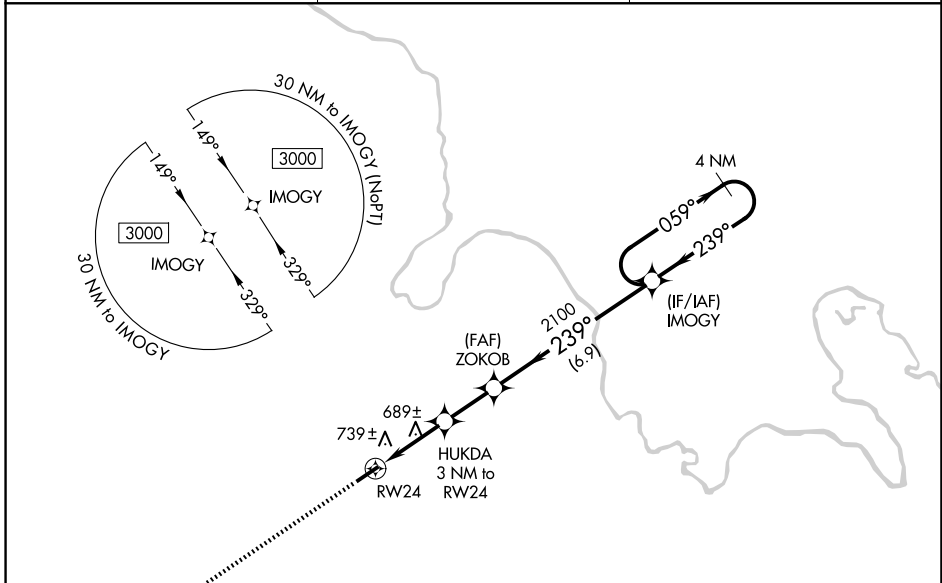
MUHLENBERG COUNTY (M21)

RNP APCH - GPS.

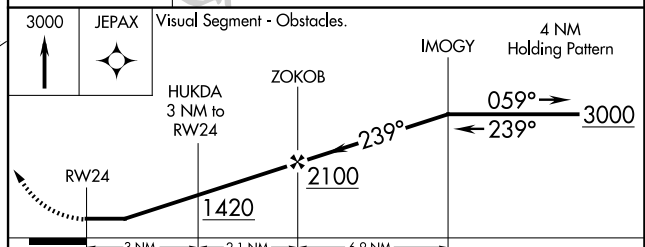
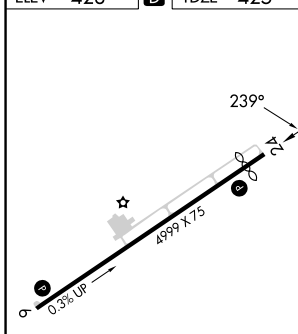
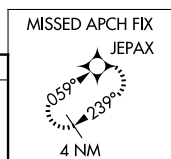
▽ **NA** When local altimeter setting not received, use Owensboro altimeter setting and increase all MDAs 80 feet. Increase LP Cats C/D visibility $\frac{3}{8}$ SM and LNAV Cats C/D and Circling Cats C/D visibility $\frac{1}{4}$ SM. Procedure NA at night. Rwy 24, helicopter visibility reduction below 1 SM NA.

MISSED APPROACH: Climb to 3000 direct JEPAX and hold.

AWOS-3 120.45	CAMPBELL APP CON ★ 118.1 269.525	UNICOM 123.0 (CTAF)
-------------------------	--	-------------------------------



ELEV 428	D	TDZE 425
----------	----------	----------



CATEGORY	A	B	C	D
LP MDA	940-1	515 (600-1)	940-1 $\frac{3}{8}$	515 (600-1 $\frac{1}{8}$)
LNAV MDA	1000-1	575 (600-1)	1000-1 $\frac{5}{8}$	575 (600-1 $\frac{1}{8}$)
CIRCLING	1040-1 612 (700-1)	1100-1 672 (700-1)	1180-2 $\frac{1}{4}$ 752 (800-2 $\frac{1}{4}$)	1200-2 $\frac{1}{2}$ 772 (800-2 $\frac{1}{2}$)

MIRL Rwy 6-24 **Ⓛ**
REIL Rwy 6 and 24 **Ⓛ**

GREENVILLE, KENTUCKY
Amdt 1E 11AUG22

RNAV (GPS) RWY 24

SE-1, 19 MAR 2026 to 16 APR 2026

SE-1, 19 MAR 2026 to 16 APR 2026