

VORTAC GGG 112.9 Chan 76	APP CRS 190°	Rwy Ldg TDZE Apt Elev N/A N/A 442
---------------------------------------	------------------------	---

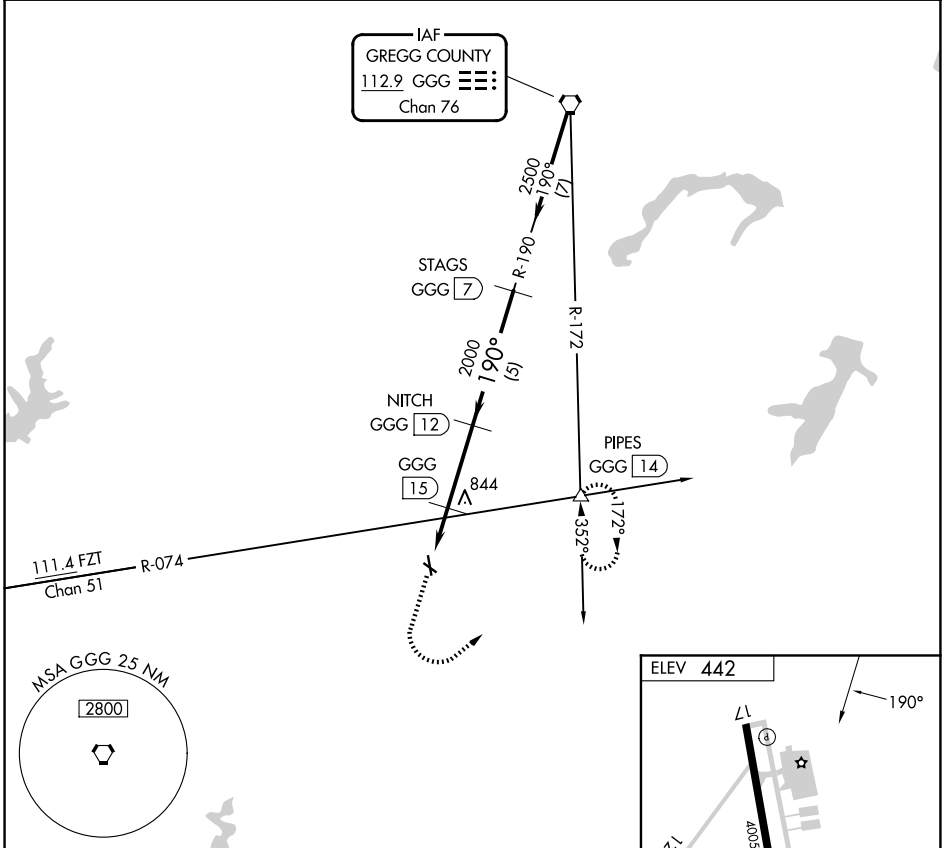
VOR/DME-A

RUSK COUNTY (R.F.I)

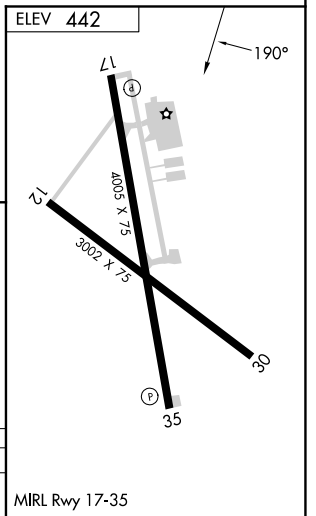
NA When local altimeter setting not received, use Longview altimeter setting and increase all MDAs 60 feet and Circling Cat C visibility 1/4 SM. Circling Rwy 12, 17 and 30 NA at night.

MISSED APPROACH: Climb to 1800 then climbing left turn to 2500 via heading 045° and GGG R-172 to PIPES INT/14 DME and hold.

AWOS-3 119.375	LONGVIEW APP CON ★ 124.275 257.975	UNICOM 122.8 (CTAF)
--------------------------	--	-------------------------------



1800	2500	hdg 045°	GGG R-172	PIPES GGG 14	STAGS GGG 7
		GGG 16.9	GGG 15	NITCH GGG 12	2500
CATEGORY	A	B	C	D	Procedure Turn NA
CIRCLING	1220-1 778 (800-1)	1220-1 1/4 778 (800-1 1/4)	1220-2 1/4 778 (800-2 1/4)	NA	



SC-2, 19 MAR 2026 to 16 APR 2026

SC-2, 19 MAR 2026 to 16 APR 2026