

CLARKSVILLE, TENNESSEE

# RNAV (GPS) X RWY 23

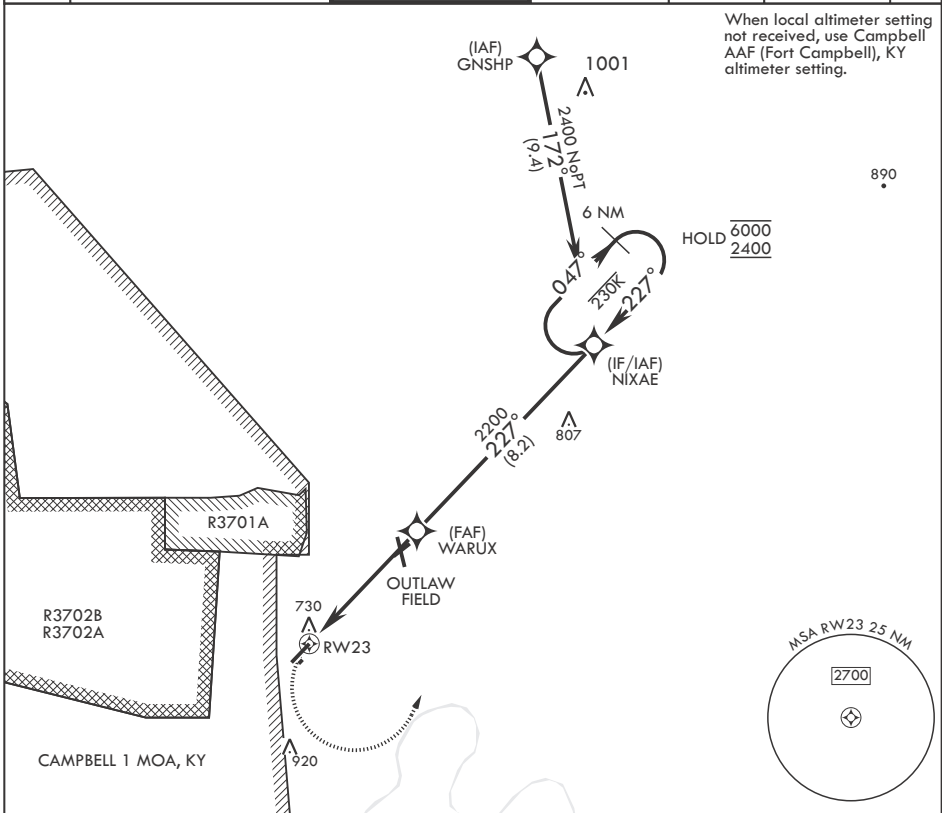
APCH CRS <b>227°</b>	Rwy Idg TDZE Arprt Elev	<b>5000</b> <b>587</b> <b>596</b>
-------------------------	-------------------------------	-----------------------------------------

- (USA)

SABRE AAF (FORT CAMPBELL) (KEOD)

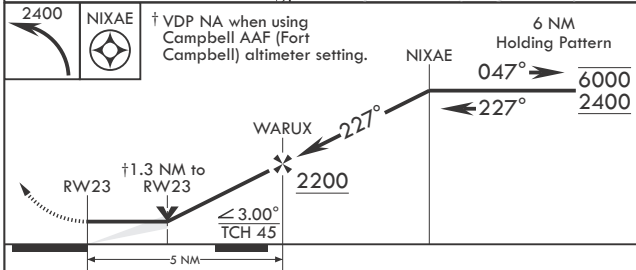
RNP APCH-GPS	MISSED APPROACH: Climbing left turn to 2400 direct NIXAE and hold.
RADAR required	
* Circling not authorized to Rwy 5R/23L.	

ATIS <b>306.5</b>	CAMPBELL APP CON/DEP CON <b>134.35 307.025</b>	TOWER* <b>124.675 (CTAF) 290.45</b>	GND CON <b>142.975 267.3</b>	CLNC DEL <b>237.6</b>	EAGLE RADIO <b>139.9 285.7</b>	ASR
----------------------	---------------------------------------------------	----------------------------------------	---------------------------------	--------------------------	-----------------------------------	-----

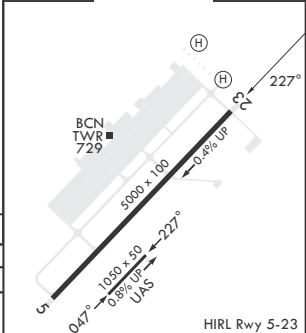


SE-1, 19 MAR 2026 to 16 APR 2026

SE-1, 19 MAR 2026 to 16 APR 2026



ELEV 596	TDZE 587
----------	----------



CATEGORY	A	B	C	D
LNAV MDA	1060-1 473 (500-1)	1060-1 473 (500-1)	1060-1 473 (500-1)	1060-1 473 (500-1)
CIRCLING*	1160-1 565 (600-1)	1240-1 645 (700-1)	1300-2 705 (800-2)	1300-2 705 (800-2)

CLARKSVILLE, TENNESSEE

36°34'N - 87°29'W

SABRE AAF (FORT CAMPBELL) (KEOD)

Amdt 1 07SEP23

# RNAV (GPS) X RWY 23