

CLARKSVILLE, TENNESSEE

RNAV (GPS) X RWY 5

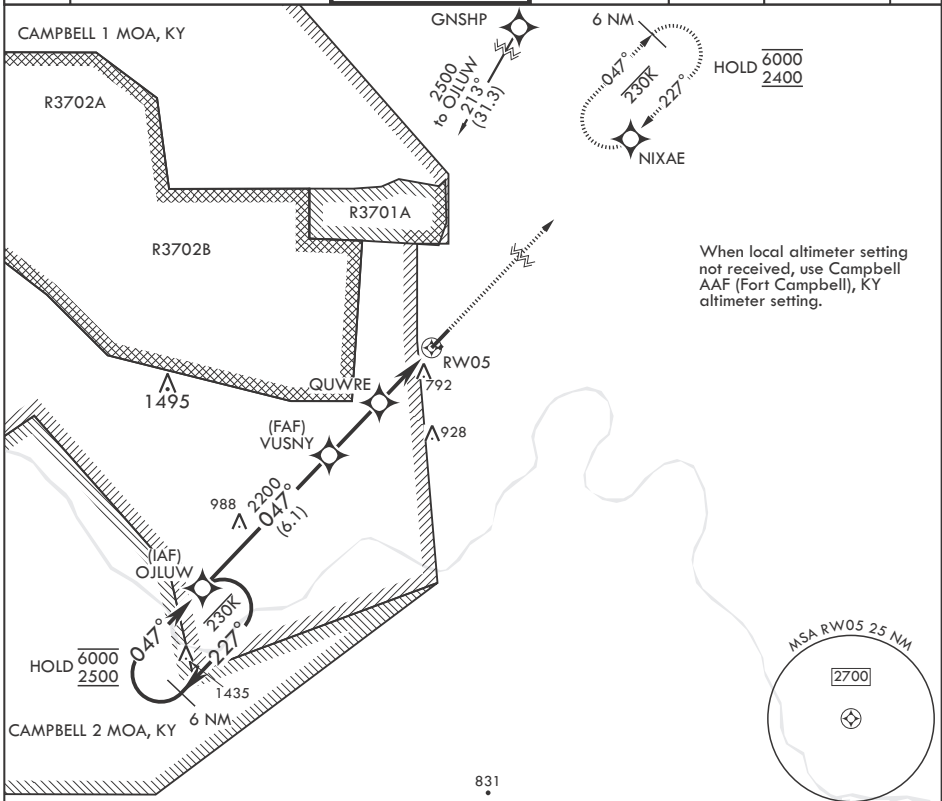
APCH CRS 047°	Rwy Idg TDZE Arprt Elev	5000 595 596
-------------------------	-------------------------------	---

- (USA)

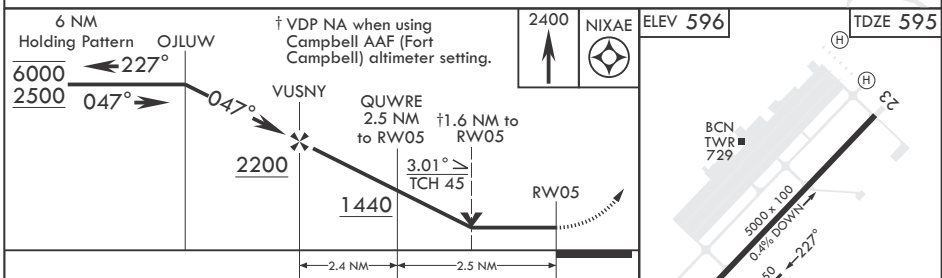
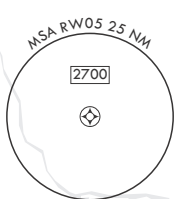
SABRE AAF (FORT CAMPBELL) (KEOD)

RNP APCH-GPS	MISSED APPROACH: Climb to 2400 direct NIXAE and hold.				
RADAR required					
* Circling not authorized to Rwy 05R/23L.					

ATIS 306.5	CAMPBELL APP CON/DEP CON 134.35 307.025	TOWER* 124.675 (CTAF) 290.45	GND CON 142.975 267.3	CLNC DEL 237.6	EAGLE RADIO 139.9 285.7	ASR
----------------------	---	--	---------------------------------	--------------------------	-----------------------------------	-----



When local altimeter setting not received, use Campbell AAF (Fort Campbell), KY altimeter setting.



CATEGORY	A	B	C	D
LNAV MDA	1180-1 585 (600-1)	1240-1 645 (700-1)	1180-1 3/4 705 (800-2)	585 (600-1 3/4) 1300-2 1/4 705 (800-2 1/4)
CIRCLING*	1180-1 585 (600-1)	1240-1 645 (700-1)	1300-2 705 (800-2)	1300-2 1/4 705 (800-2 1/4)

CLARKSVILLE, TENNESSEE

36°34'N - 87°29'W

SABRE AAF (FORT CAMPBELL) (KEOD)

Amdt 1 10AUG23

RNAV (GPS) X RWY 5

SE-1, 19 MAR 2026 to 16 APR 2026

SE-1, 19 MAR 2026 to 16 APR 2026

HIRL Rwy 5-23