

| | | | |
|--|------------------------|-----------------------------|---|
| WAAS CH 72827 W09A | APP CRS 088° | Rwy Ldg TDZE Apt Elev | 4218 1021 1021 |
|--|------------------------|-----------------------------|---|

RNAV (GPS) RWY 9

UNION COUNTY (MRT)

RNP APCH - GPS.

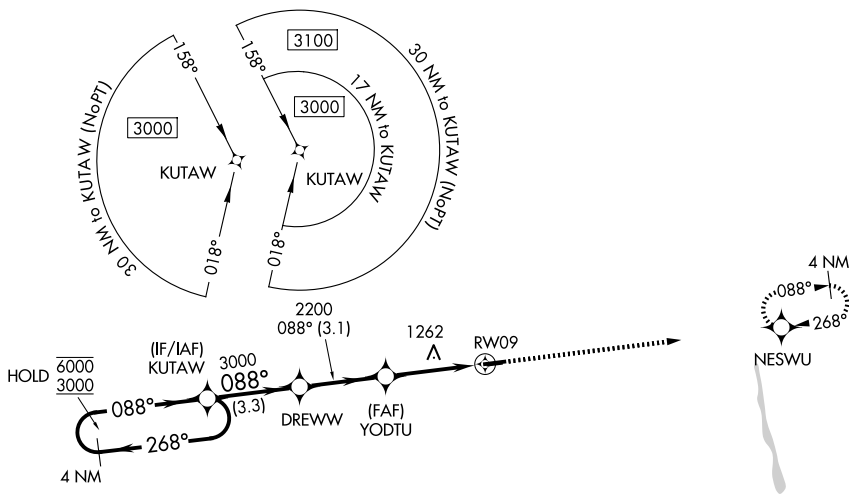
⚠ When Circling to Rwy 27 at night, operational VGSIs required, remain on or above VGSi glidepath until threshold. For uncompensated Baro-VNAV systems, LNAV/VNAV NA below -17°C or above 54°C. Circling NA to Rwy 8 and 26.

MISSED APPROACH: Climb to 3000 direct NESWU and hold.

AWOS-3
119.275

COLUMBUS APP CON
125.95 317.775

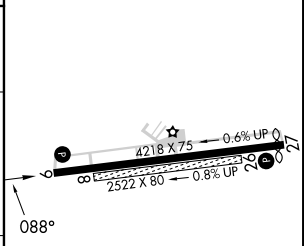
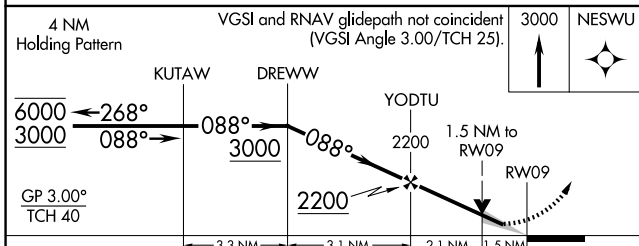
UNICOM
123.05 (CTAF) **📻**



EC-2, 19 MAR 2026 to 16 APR 2026

EC-2, 19 MAR 2026 to 16 APR 2026

| | |
|-----------|-----------|
| ELEV 1021 | TDZE 1021 |
|-----------|-----------|



| CATEGORY | A | B | C | D |
|---------------|-----------------------|------------------------------------|--|--|
| LPV DA | | 1285- ⁷ / ₈ | 264 (300- ⁷ / ₈) | |
| LNAV/ VNAV DA | | 1432-1 ¹ / ₈ | 411 (500-1 ¹ / ₈) | |
| LNAV MDA | 1520-1 | 499 (500-1) | 1520-1 ³ / ₈ | 499 (500-1 ³ / ₈) |
| CIRCLING | 1520-1 499 (500-1) | 1540-1 519 (600-1) | 1620-1 ¹ / ₂ 599 (600-1 ¹ / ₂) | 1620-2 599 (600-2) |

MIRL Rwy 9-27 **📻**
REIL Rwy 9 and 27 **📻**