

| | | |
|--|------------------------|---|
| WAAS CH 73032 W10A | APP CRS 099° | Rwy Idg TDZE 1179 Apt Elev 1182 |
|--|------------------------|---|

RNAV (GPS) RWY 10

MOUNTAIN VIEW (MNF)

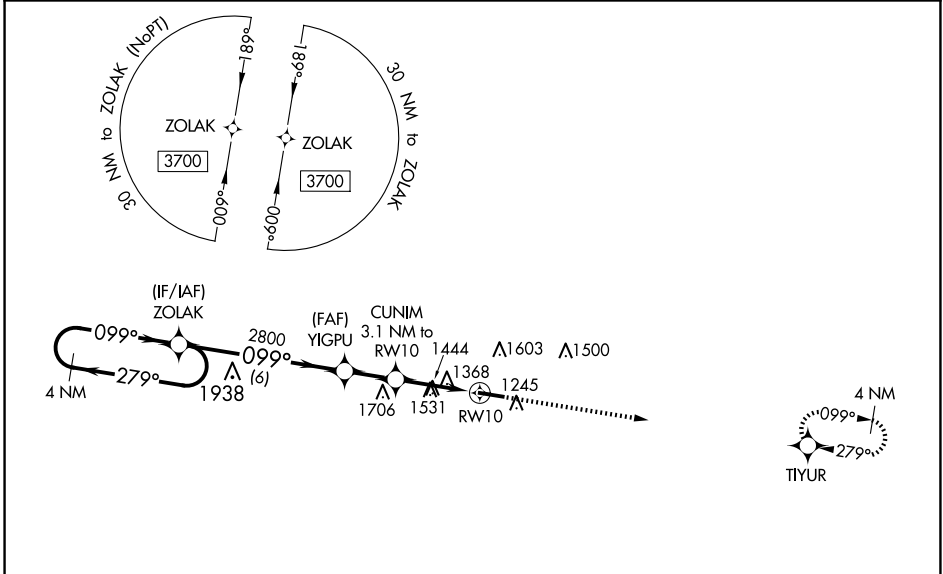
RNP APCH - GPS.

Procedure NA at night. Rwy 10 helicopter visibility reduction below 1 SM

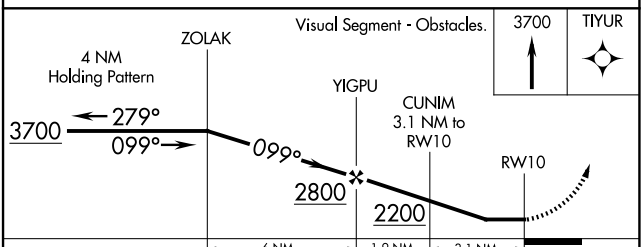
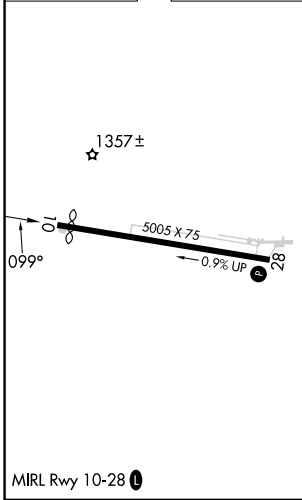
NA. Use West Plains altimeter setting, when not received, use Fort Leonard Wood altimeter setting and increase all MDA 80 feet; increase LP Cats C and D visibility ¼ mile, increase LNAV Cat B visibility ¼ mile, LNAV Cats C and D visibility ⅓ mile, and increase Circling Cats B and C visibility ¼ mile.

MISSED APPROACH: Climb to 3700 direct TIYUR and hold.

| | | |
|----------------------------|---|-------------------------------|
| UNO ASOS 123.825 | KANSAS CITY CENTER 128.35 284.675 | UNICOM 122.8 (CTAF) |
|----------------------------|---|-------------------------------|



| | |
|-----------|-----------|
| ELEV 1182 | TDZE 1179 |
|-----------|-----------|



| CATEGORY | A | B | C | D |
|----------|-----------------------|-------------------------|-------------------------|------------------------|
| LP MDA | 1780-1 | 601 (600-1) | 1780-1¾ | 601 (600-1¾) |
| LNAV MDA | 1820-1 | 641 (700-1) | 1820-1⅞ | 641 (700-1⅞) |
| CIRCLING | 1880-1 698 (700-1) | 2080-1¼ 898 (900-1¼) | 2080-2¾ 898 (900-2¾) | 2180-3 998 (1000-3) |

NC-3, 19 MAR 2026 to 16 APR 2026

NC-3, 19 MAR 2026 to 16 APR 2026