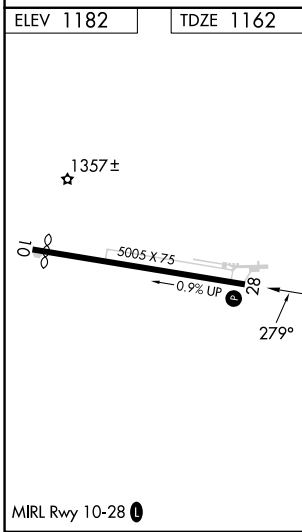
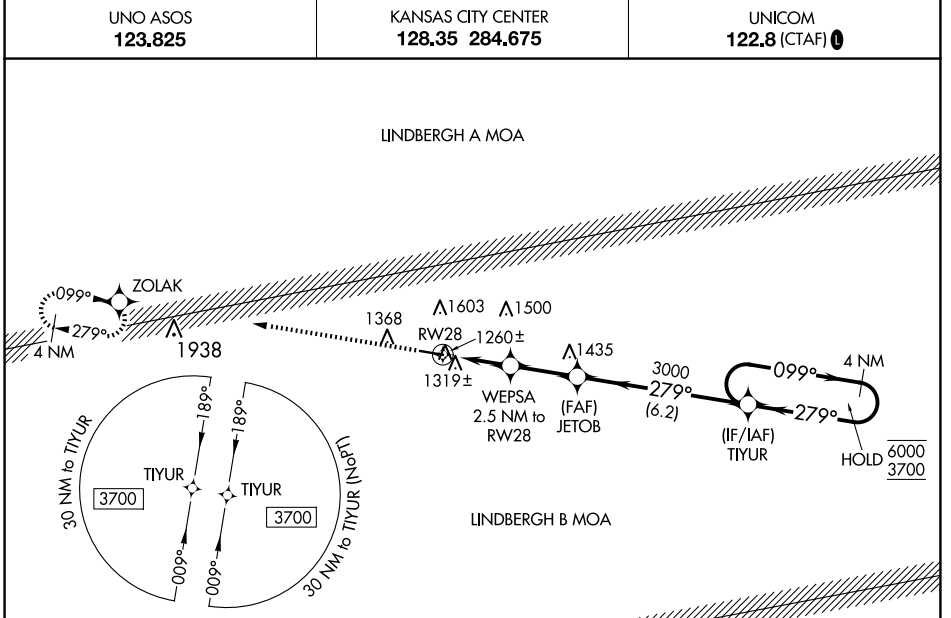


WAAS CH <b>63232</b> <b>W28A</b>	APP CRS <b>279°</b>	Rwy Idg TDZE Apt Elev	<b>5005</b> <b>1162</b> <b>1182</b>
--	------------------------	-----------------------------	---

# RNAV (GPS) RWY 28

MOUNTAIN VIEW (MNF)

RNP APCH - GPS.	<p><b>NA</b> Circling Rwy 10 NA at night. Rwy 28 helicopter visibility reduction below 1 SM NA. Use West Plains altimeter setting; when not received, use Fort Leonard Wood altimeter setting and increase all MDA 100 feet; increase LP Cat C/D visibility ¼ SM, LNAV Cat C/D visibility ¼ SM and Circling Cat B/C visibility ¼ SM. Straight-in Rwy 28 at night, Circling Rwy 28 at night, operational VGSI required, remain on or above VGSI glidepath until threshold.</p>	<p>MISSED APPROACH: Climb to 3700 direct ZOLAK and hold.</p>
<p>UNO ASOS <b>123.825</b></p>		



3700	ZOLAK	TIYUR	4 NM Holding Pattern
↑	✦		
WEPESA 2.5 NM to RWY 28	JETOB	TIYUR	
3.50° TCH 54	3000	279°	099° → 6000 ← 279° 3700
2100	279°		
2.5 NM	2.4 NM	6.2 NM	
CATEGORY	A	B	C
LP MDA	1560-1	398 (400-1)	1560-1½ 398 (400-1½)
LNAV MDA	1620-1	458 (500-1)	1620-1¾ 458 (500-1¾)
CIRCLING	1880-1 698 (700-1)	2080-1¼ 898 (900-1¼)	2080-2¾ 898 (900-2¾) 2180-3 998 (1000-3)

NC-3, 19 MAR 2026 to 16 APR 2026

NC-3, 19 MAR 2026 to 16 APR 2026