

LOC/DME I-MKJ <b>110.5</b> Chan 42	APP CRS <b>259°</b>	Rwy Ldg TDZE <b>5252</b> <b>2519</b>	Apt Elev <b>2558</b>
--	------------------------	--	-------------------------

# LOC RWY 26

MOUNTAIN EMPIRE (MKJ)

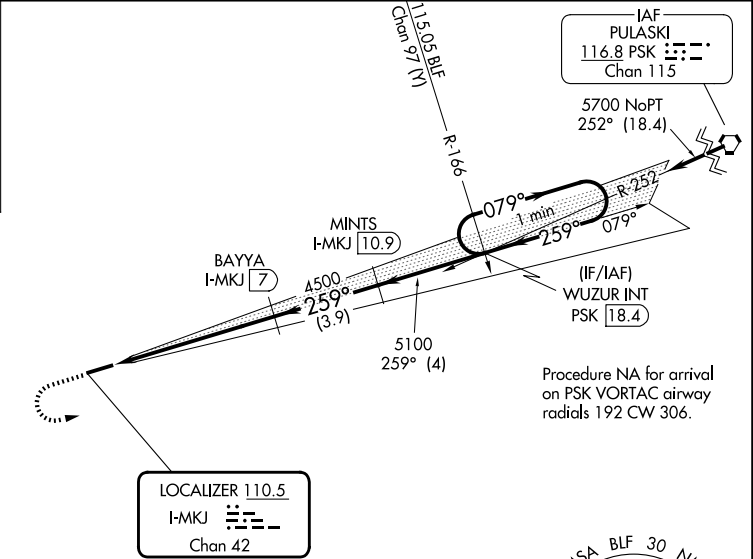
**NA** Circling NA north of Rwy 8-26.  
**NA** Helicopter visibility reduction below 3/4 SM NA.  
 DME required.

MISSED APPROACH: Climb to 4600 then climbing left turn to 6000 on heading 070° and PSK VORTAC R-252 to WUZUR INT and hold.

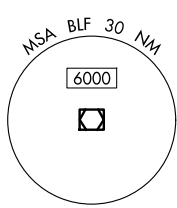
AWOS-3 <b>123.875</b>	ATLANTA CENTER <b>127.85 269.3</b>	UNICOM <b>122.7 (CTAF) 0</b>
--------------------------	---------------------------------------	---------------------------------

ALTERNATE MISSED APCH FIX

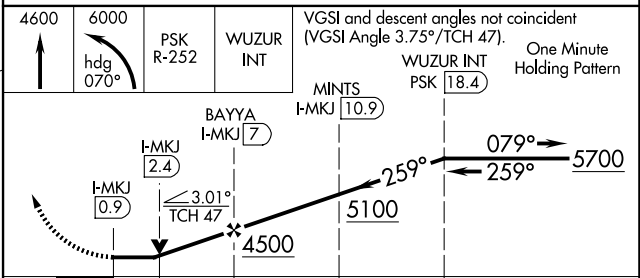
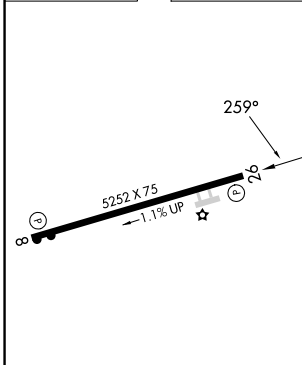
**BLUEFIELD**  
BLF  
115.05  
Chan 97 (Y)



Procedure NA for arrival on PSK VORTAC airway radials 192 CW 306.



ELEV 2558	TDZE 2519
-----------	-----------



REIL Rwys 8 and 26  
MIRL Rwy 8-26 0

FAF to MAP 6.1 NM

Knots	60	90	120	150	180
Min:Sec	6:06	4:04	3:03	2:26	2:02

CATEGORY	A	B	C	D
S-26	3160-1	641 (700-1)	3160-1 7/8 641 (700-1 7/8)	NA
CIRCLING	3260-1	702 (800-1)	4440-3 1882 (1900-3)	NA

NE-3, 19 MAR 2026 to 16 APR 2026

NE-3, 19 MAR 2026 to 16 APR 2026