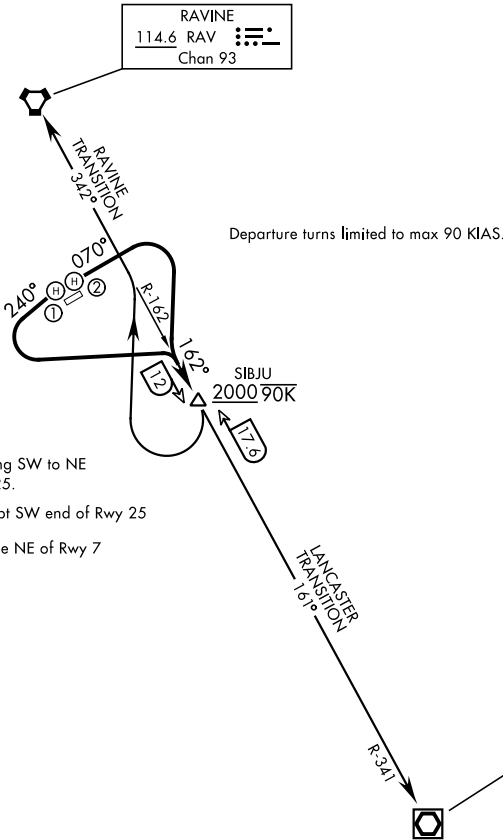


[USA]

DME required

GND CON
135.675 269.525
TOWER ★
126.2 (CTAF) 290.325
HARRISBURG DEP CON
118.25 269.45



CAUTION:
1300' ridge running SW to NE
1 mile NE Rwy 7-25.

- ① Located on arpt SW end of Rwy 25
- ② Located 3/4 mile NE of Rwy 7

NE-4, 19 MAR 2026 to 16 APR 2026

NE-4, 19 MAR 2026 to 16 APR 2026



DEPARTURE ROUTE DESCRIPTION

TAKEOFF EAST HELIPAD: Climb on heading 070° to RAV VORTAC R-162, then right turn to intercept RAV R-162 to cross SIBJU at or above 2000. Thence via (transition) or (assigned route). Expect clearance to assigned altitude ten minutes after departure.

TAKEOFF WEST HELIPAD: Climb on heading 240°, then left turn to intercept RAV VORTAC R-162 to cross SIBJU at or above 2000. Thence via (transition) or (assigned route). Expect clearance to assigned altitude ten minutes after departure.

LANCASTER TRANSITION (MUI4.LRP): From over SIBJU proceed on LRP VOR/DME R-341 to LRP.

RAVINE TRANSITION (MUI4.RAV): From over SIBJU right turn to intercept RAV VORTAC R-162 to RAV.