

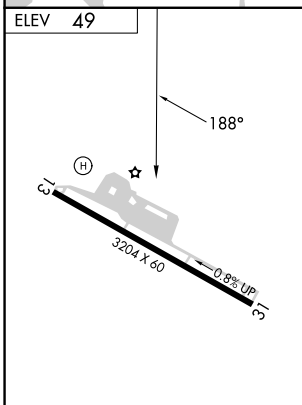
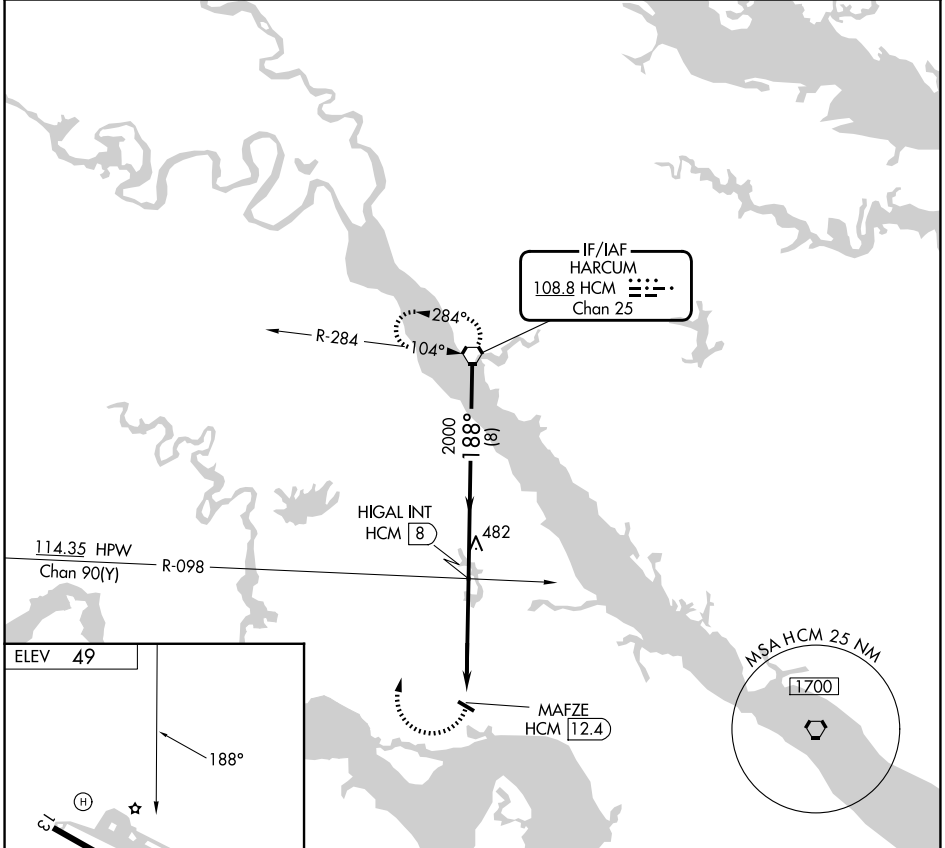
VORTAC HCM 108.8 Chan 25	APP CRS 188°	Rwy Ldg TDZE Apt Elev 49	N/A N/A 49
---------------------------------------	------------------------	--	---------------------------------------

VOR-B

WALTRIP WILLIAMSBURG EXEC AIRPORT (JGG)

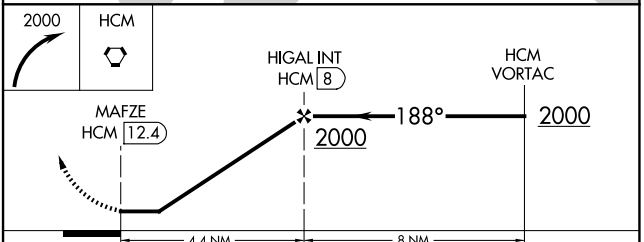
▼ ▲	Procedure NA at night. Rwy 13, 31 helicopter visibility reduction below 1 SM NA.	MISSED APPROACH: Climbing right turn to 2000 direct HCM VORTAC and hold.
----------------------	---	--

AWOS-3 120.625	NORFOLK APP CON 119.45 360.6	GCO 135.075	UNICOM 122.8 (CTAF) 0
--------------------------	--	-----------------------	---------------------------------



REIL Rwys 13 and 31 0
MIRL Rwy 13-31 0

	FAF to MAP 4.4 NM				
Knots	60	90	120	150	180
Min:Sec	4:24	2:56	2:12	1:46	1:28



CATEGORY	A	B	C	D
CIRCLING	1060-3 1011 (1100-3)			NA

VOR-B

NE-3, 19 MAR 2026 to 16 APR 2026

NE-3, 19 MAR 2026 to 16 APR 2026