

MMALT SEVEN DEPARTURE (RNAV)

SC-5, 19 MAR 2026 to 16 APR 2026

RNAV 1 - DME/DME/IRU or GPS.
RADAR required.

HOUSTON DEP CON
134.45 284.0
ASOS
118.525
CLNC DEL
124.0
CTAF
122.725

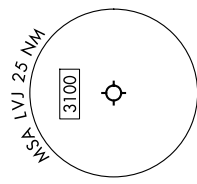
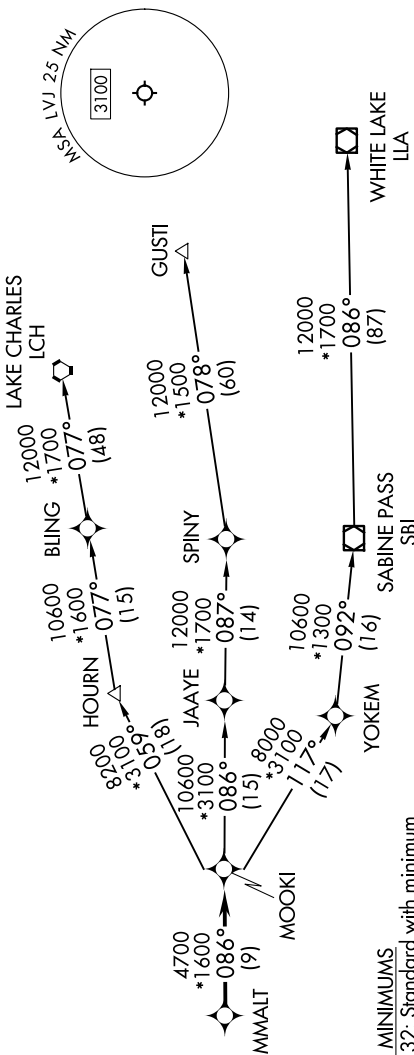
MMALT SEVEN DEPARTURE (RNAV)

30NOV23

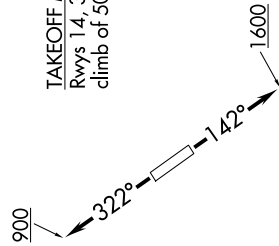
HOUSTON, TEXAS

PEARLAND RGNL (L.VJ)

**TOP ALTITUDE:
ASSIGNED BY ATC**



TAKEOFF MINIMUMS
Rwys 14, 32: Standard with minimum climb of 500'/NM to 560.



NOTE: GUSTI and LCH Transitions ATC assigned only for aircraft departing AXH, EFD, GLS, HPY, IWS, LBX, LVJ, SGR, TME, T00, T41 and 54T.

DEPARTURE ROUTE DESCRIPTION

TAKEOFF RUNWAY 14: Climb on heading 142° to 1600, for RADAR vectors to MMALT, thence. . . .

TAKEOFF RUNWAY 32: Climb on heading 322° to 900, for RADAR vectors to MMALT, thence. . . .

. . . on track 086° to MOOKI, then on (transition). Maintain ATC assigned altitude. Expect filed altitude 10 minutes after departure.

- GUSTI TRANSITION (MMALT7.GUSTI)
- LAKE CHARLES TRANSITION (MMALT7.LCH)
- WHITE LAKE TRANSITION (MMALT7.LLA)

NOTE: Chart not to scale.

SC-5, 19 MAR 2026 to 16 APR 2026